

Finini shoes

CATALOGUE

Right now, you're on
your way to discovering
a vibrant world of

colours & textures

Dive in, let your creativity
run wild and bring your
stunning visions to life.
Explore and enjoy!

index

fabrics

0	Imitation leather	8	4	Main Line Flax	52
	Basic Fabric	9		skai® Parotega	54
	Micro	9		Blazer	56
1	Era	12	Blazer Lite	60	
	Bondai	15	Synergy	61	
	Lucia	16	24/7 Flax	65	
	Oban	17	Hi-Tech	65	
	Oflum	18			
	Sempre Sempre Melange	19			
2	Cura	22	6	Remix 3	69
	Rivet	24		Fine Leather	73
	Xtreme	25			
	Valencia	28			
	Hush	31			
	Urban	31			
3	Silvertex	34	7	Nappa Leather	76
	Step Step Melange	38		Arona Leather	77
	Split Leather	46			
	Runner	47			
	Rhythm	48			
	Harlequin	48			

other

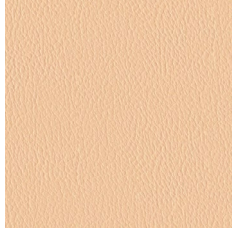
Compact Laminate	109	Laser edge ABS	107
Edge for table tops	108	Leather	87
Elasto-net	87	Linoleum	109
Enamels	100	Melamine	102
Felt	87	Mesh	84
Fenix NTM®	110	Metal	88
Glass	113	Plastic	92
Glued edge 3 mm	107	Polyurethane	97
Lacquered MDF	101	Topalit®	112
Laminate	105	Veneer for chairs	98
Laminate for chairs	98	Veneer for furniture	100
Laminate for table tops	106	Wood	99

Technical specifications	116
Legend	144

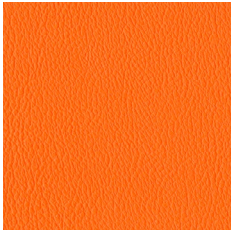
V | Imitation leather



V18N



V46



V83



V79N



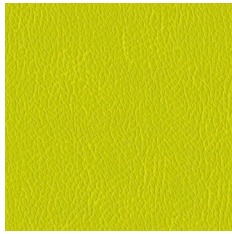
V49



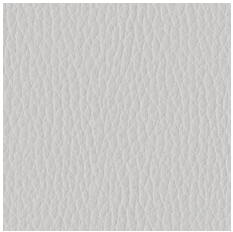
V16N



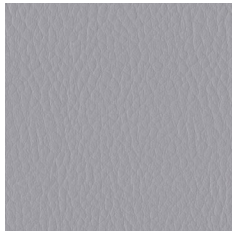
V53N



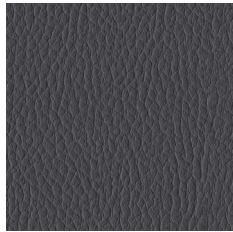
V82



V01



V28



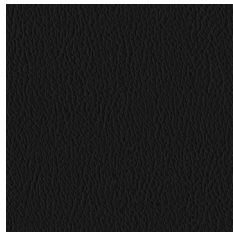
V02N



V62

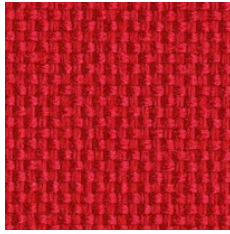


V04

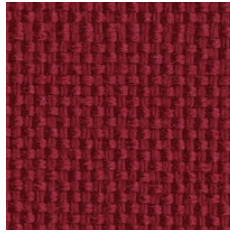


V14N

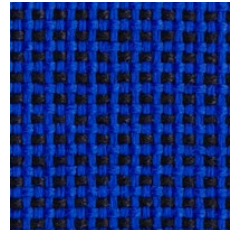
C | Basic Fabric



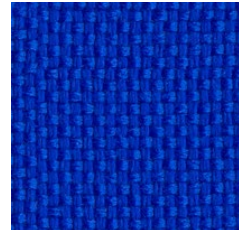
C2



C29



C14



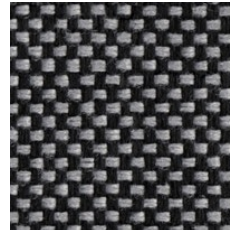
C6



C11



C12



C73



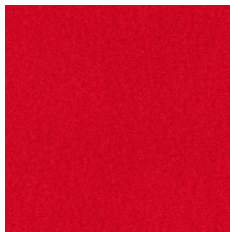
C38

SPECIFICATION

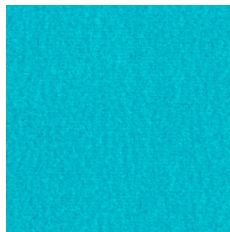


easy to
disinfect

M | Micro



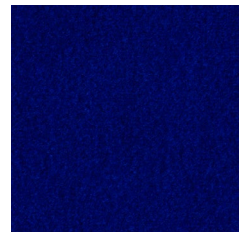
M04



M31



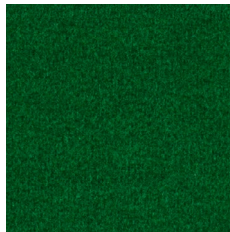
M62



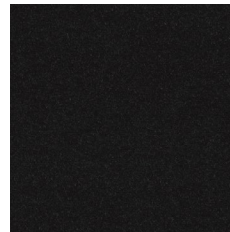
M28



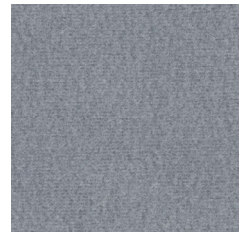
M38



M07



M43



M47



cigarette
& match



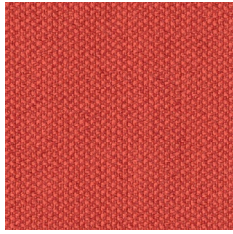
confirmed
safety

SPECIFICATION

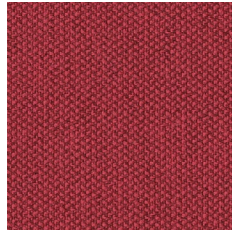
GO TO INDEX

CSE | Era

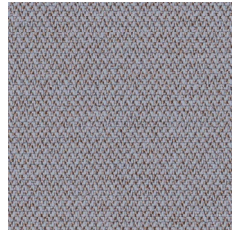
by Camira



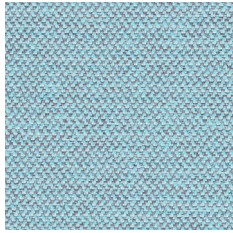
CSE29



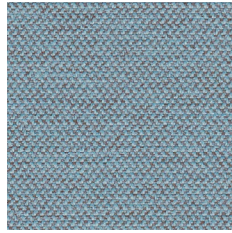
CSE28



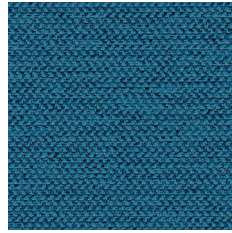
CSE11



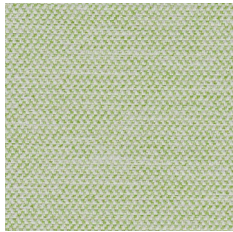
CSE39



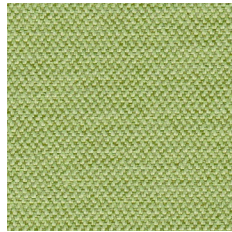
CSE43



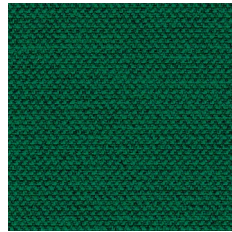
CSE42



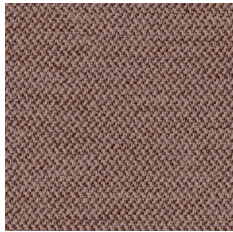
CSE33



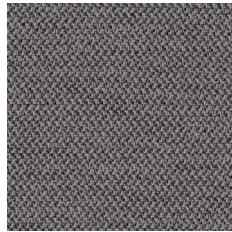
CSE34



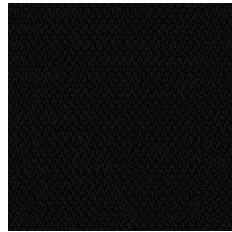
CSE35



CSE02



CSE13



CSE14

[GO TO INDEX](#)

[SPECIFICATION](#)



cigarette & match



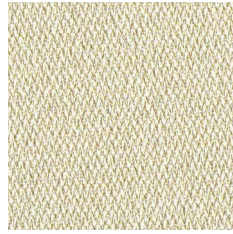
high abrasion resistance



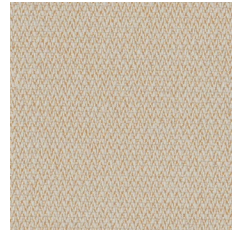
confirmed safety



easy to disinfect



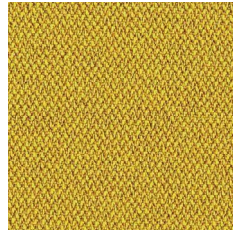
CSE30



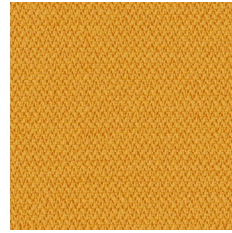
CSE01



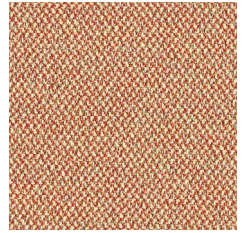
CSE31



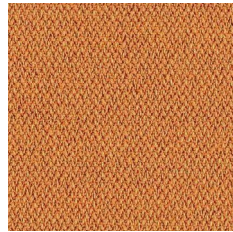
CSE32



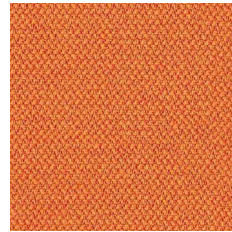
CSE03



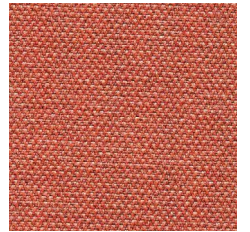
CSE25



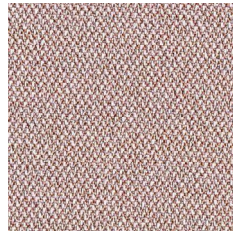
CSE27



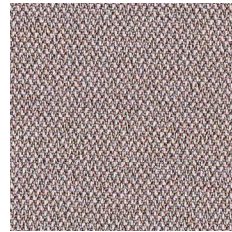
CSE05



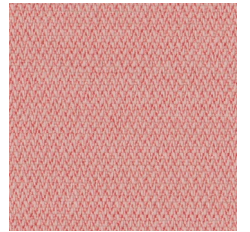
CSE26



CSE24



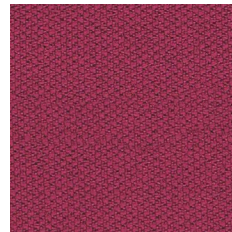
CSE23



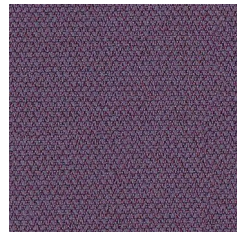
CSE19



CSE06



CSE17



CSE09



cigarette & match



high abrasion resistance



confirmed safety



easy to disinfect

SPECIFICATION

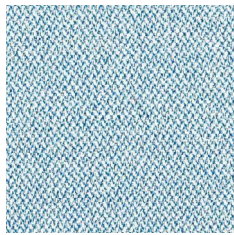
GO TO INDEX

CSE | Era

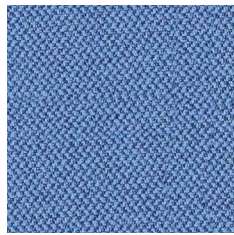
by Camira

EXTENDED

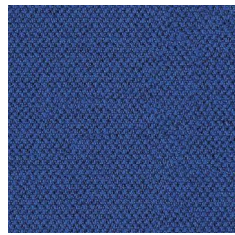
1



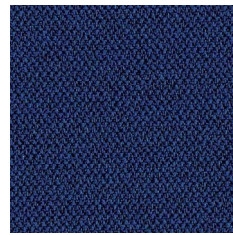
CSE38



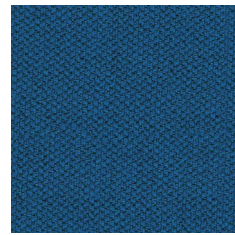
CSE08



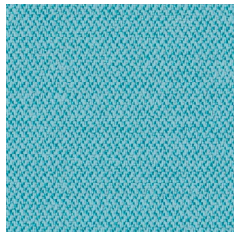
CSE12



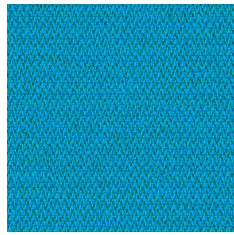
CSE40



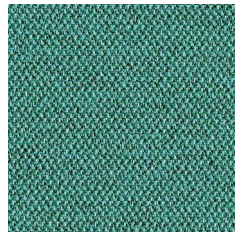
CSE15



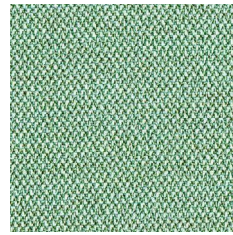
CSE20



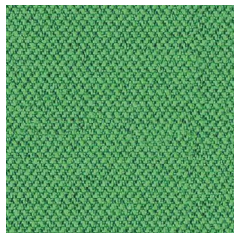
CSE10



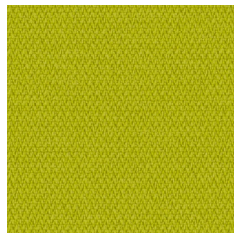
CSE37



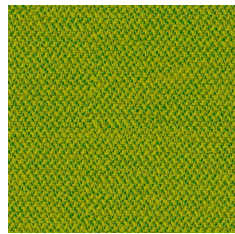
CSE36



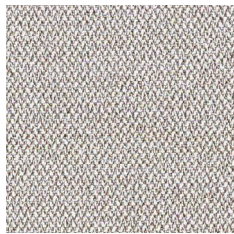
CSE18



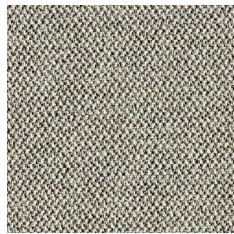
CSE07



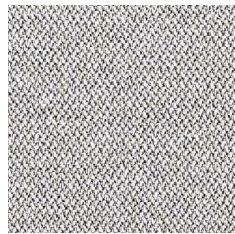
CSE16



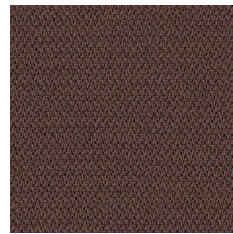
CSE41



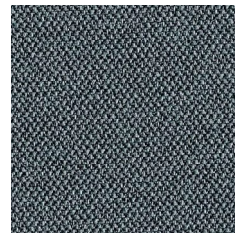
CSE45



CSE46



CSE21

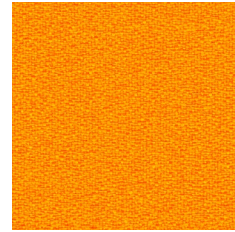


CSE44

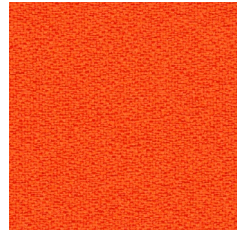
GO TO INDEX

SPECIFICATION

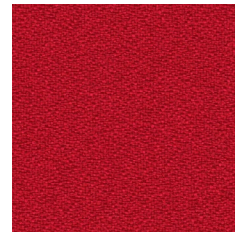




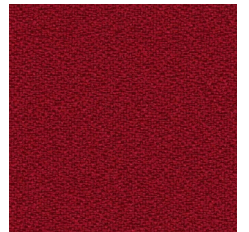
BN3005



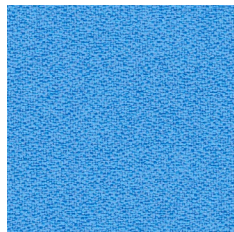
BN3012



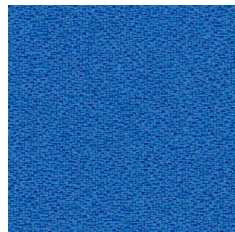
BN4011



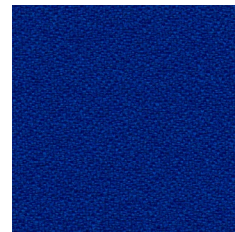
BN4007



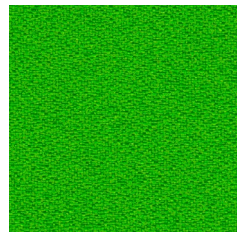
BN6006



BN6003



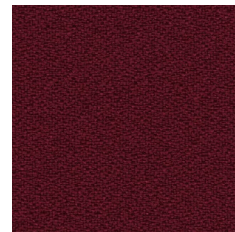
BN6016



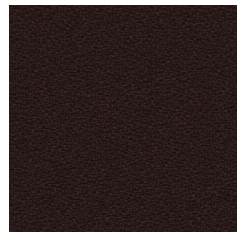
BN7048



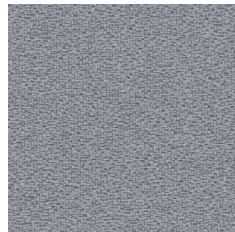
BN1008



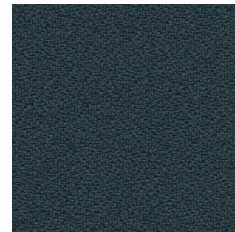
BN4017



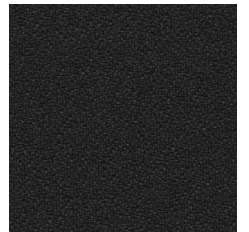
BN2036



BN8078



BN8010



BN8033



cigarette & match



high flame resistance



high abrasion resistance



confirmed safety



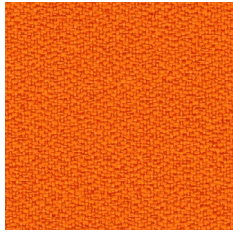
easy to disinfect

SPECIFICATION

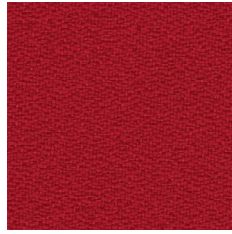
GO TO INDEX

YB | Lucia

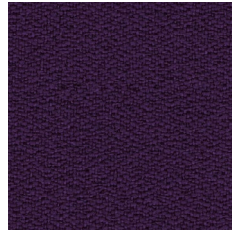
by Camira



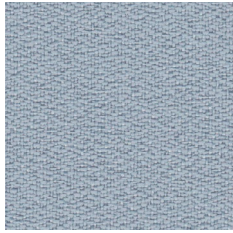
YB130



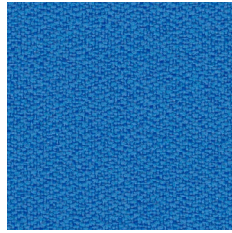
YB105



YB090



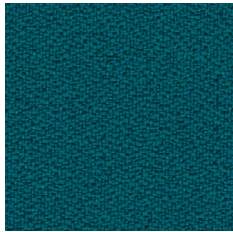
YB086



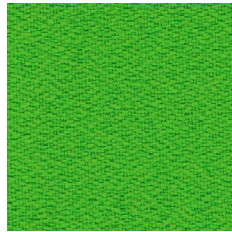
YB097



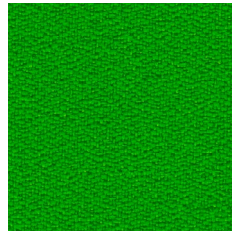
YB026



YB011



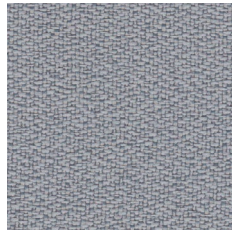
YB156



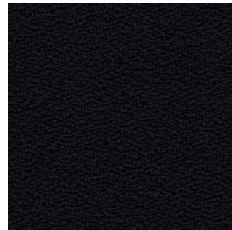
YB200



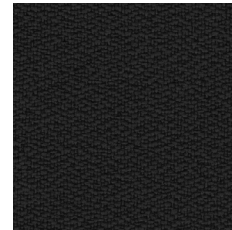
YB093



YB094



YB009



YB046

[GO TO INDEX](#)

[SPECIFICATION](#)



cigarette & match



recycled origin



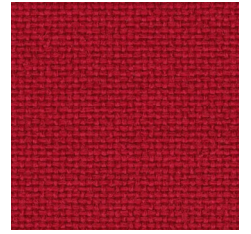
environmentally friendly



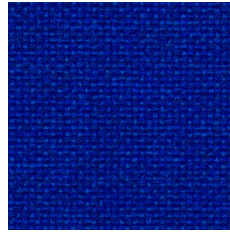
confirmed safety



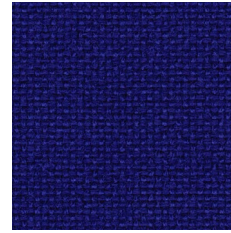
easy to disinfect



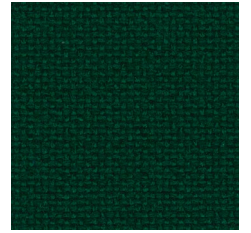
EF037



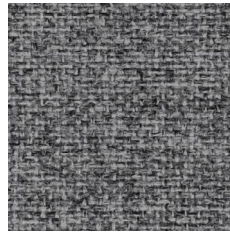
EF078



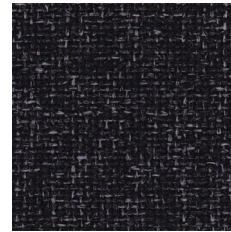
EF010



EF069



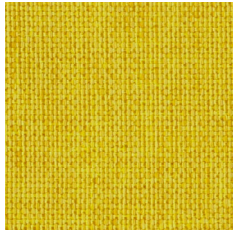
EF031



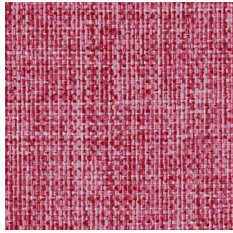
EF002



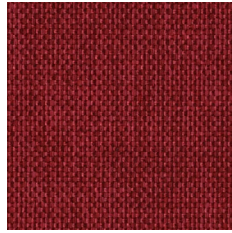
EF019



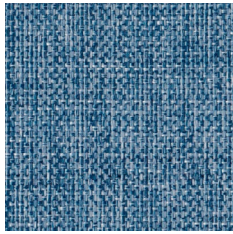
OL09



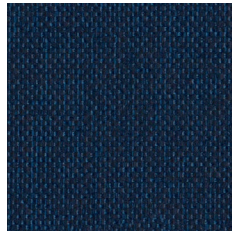
OL04



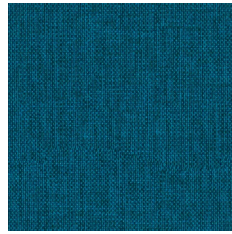
OL05



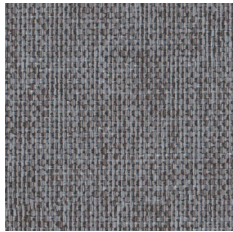
OL06



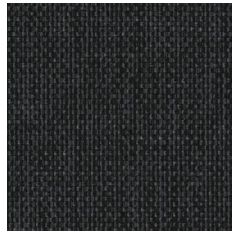
OL01



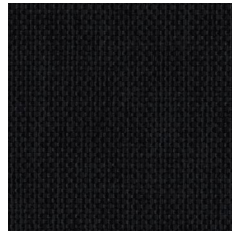
OL03



OL02



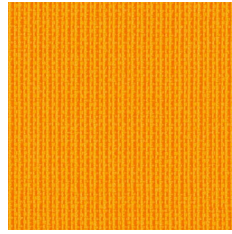
OL08



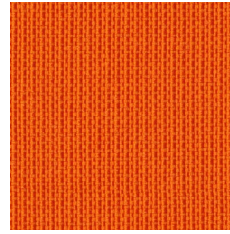
OL07



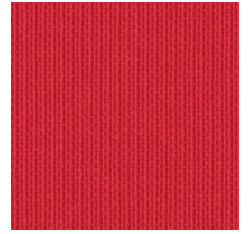
SM/SMM | Sempre/Sempre Melange



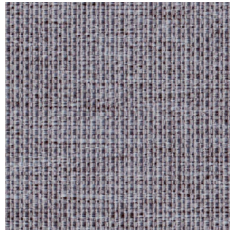
SM11



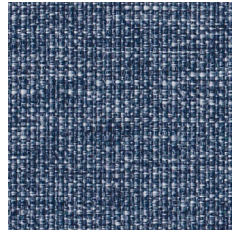
SM10



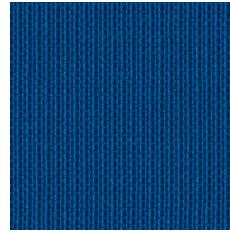
SM12



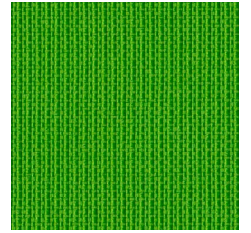
SMM01



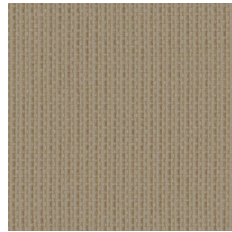
SMM03



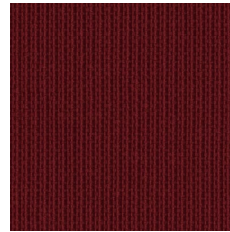
SM07



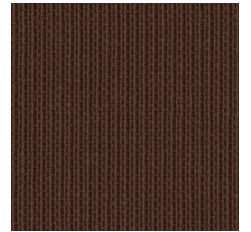
SM08



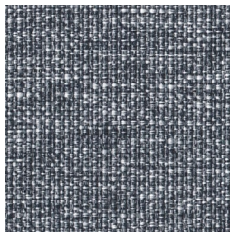
SM04



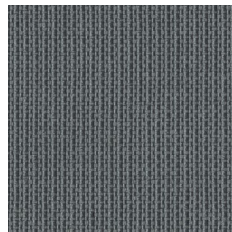
SM06



SM05



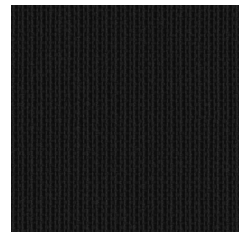
SMM02



SM03



SM02



SM01



cigarette & match



high abrasion resistance



confirmed safety



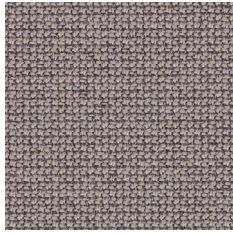
environmentally friendly

SPECIFICATION

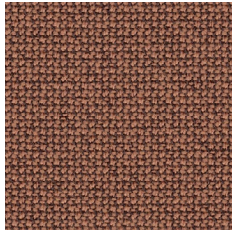
GO TO INDEX

CUR | Cura

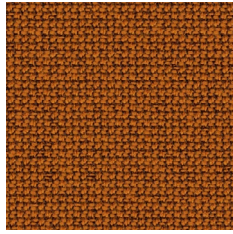
by Gabriel®



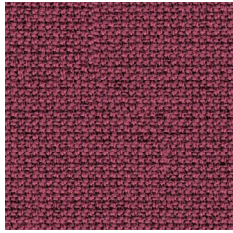
CUR61259



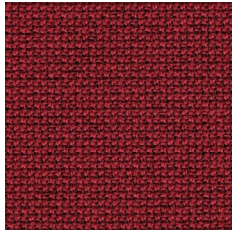
CUR61260



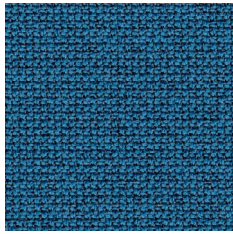
CUR62082



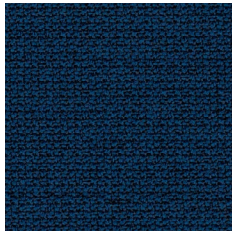
CUR64195



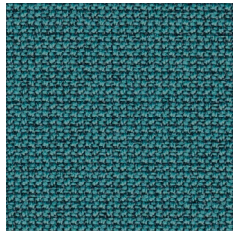
CUR64196



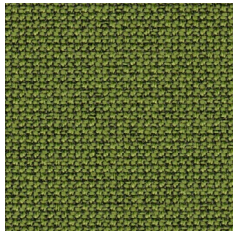
CUR66167



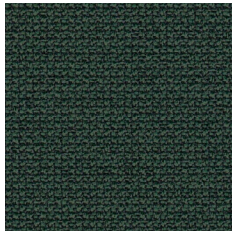
CUR66170



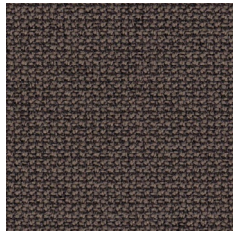
CUR68187



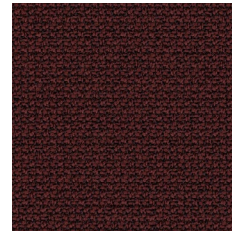
CUR68181



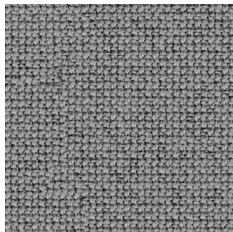
CUR68182



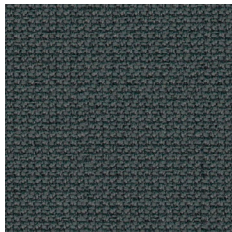
CUR61169



CUR61258



CUR60112



CUR60109



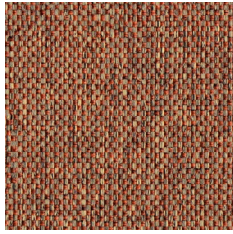
CUR60111



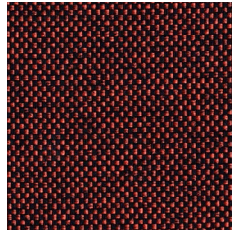


EGL | Rivet

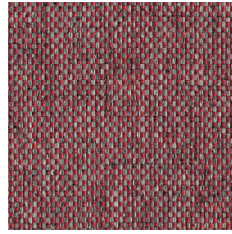
by Camira



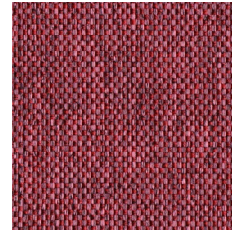
EGL14



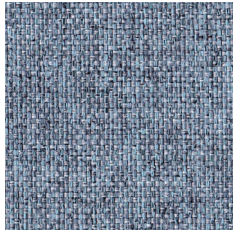
EGL32



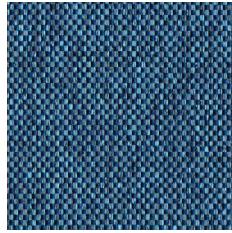
EGL13



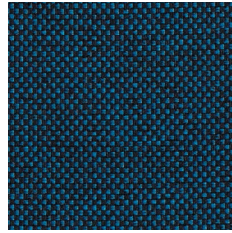
EGL12



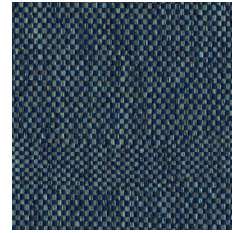
EGL16



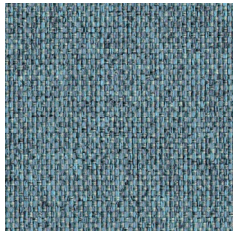
EGL24



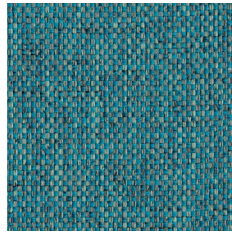
EGL35



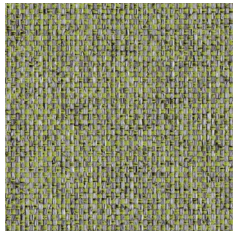
EGL27



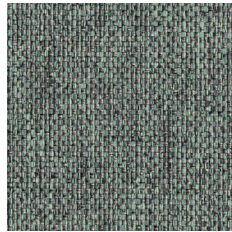
EGL20



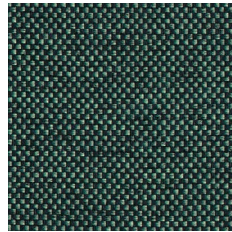
EGL21



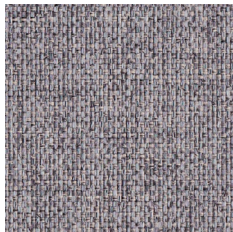
EGL05



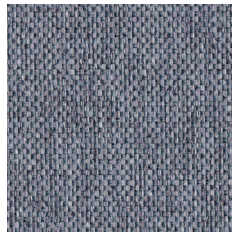
EGL15



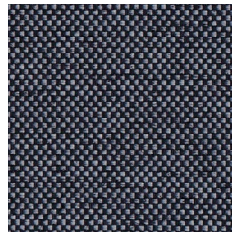
EGL34



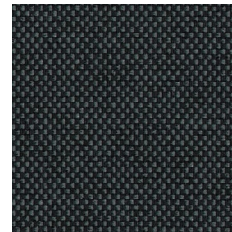
EGL01



EGL26



EGL50



EGL37



cigarette & match



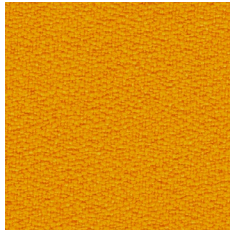
environmentally friendly



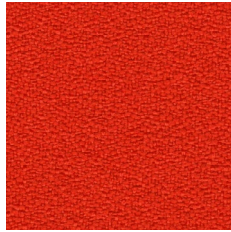
recycled origin



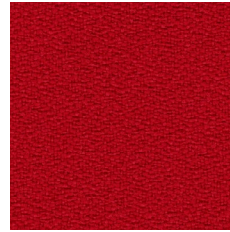
easy to disinfect



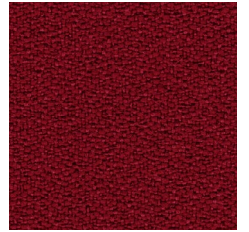
XR072



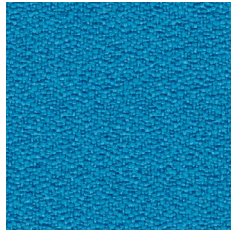
XR076



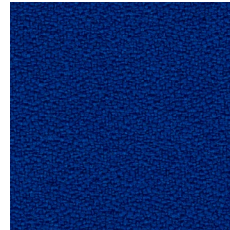
XR079



XR136



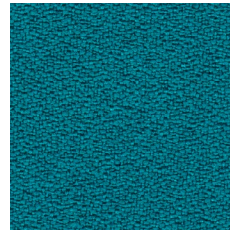
XR073



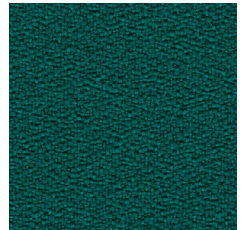
XR005



XR026



XR160



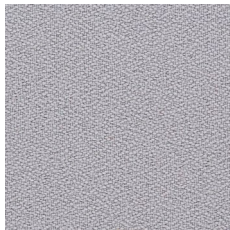
XR047



XR108



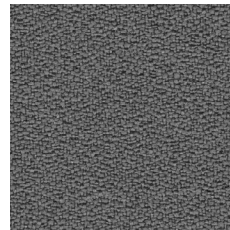
XR046



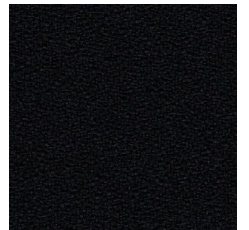
XR094



XR171



XR081



XR009



cigarette & match



high flame resistance



environmentally friendly



recycled origin



high abrasion resistance



confirmed safety



easy to disinfect

SPECIFICATION

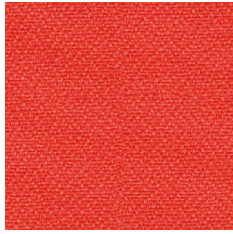
GO TO INDEX

XR | Xtreme

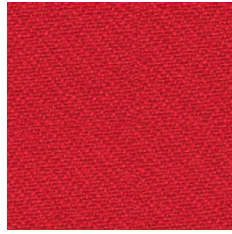
by Camira

EXTENDED

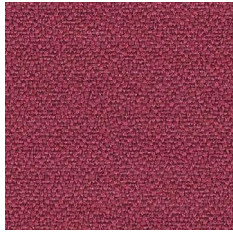
2



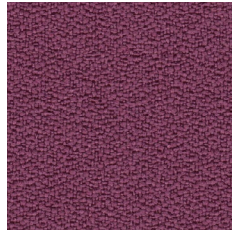
XR168



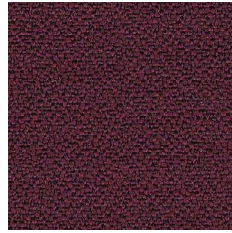
XR105



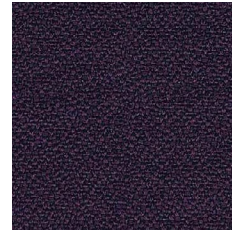
XR101



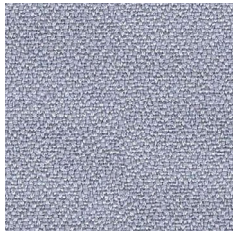
XR102



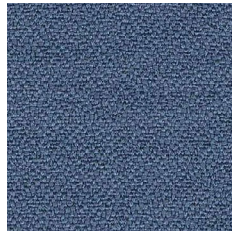
XR030



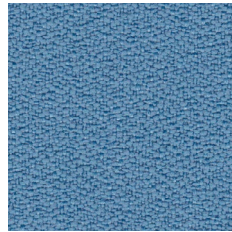
XR084



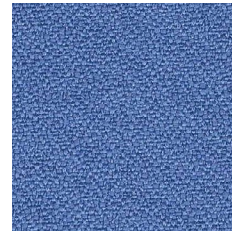
XR173



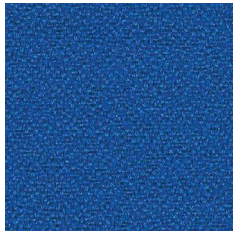
XR004



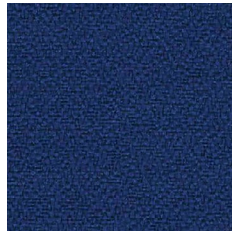
XR095



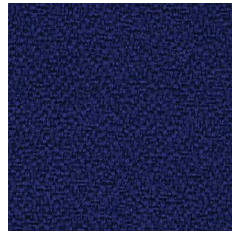
XR097



XR035



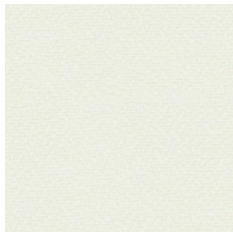
XR082



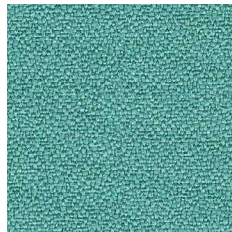
XR100



XR024



XR165



XR074

GO TO INDEX

SPECIFICATION



cigarette & match



high flame resistance



environmentally friendly



recycled origin



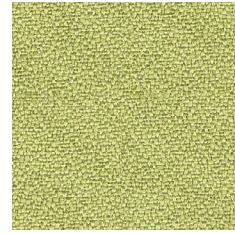
high abrasion resistance



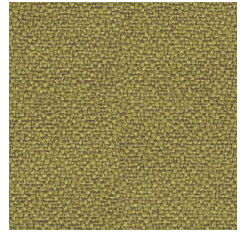
confirmed safety



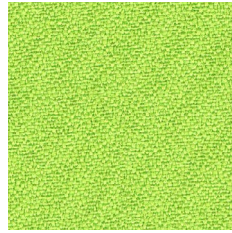
easy to disinfect



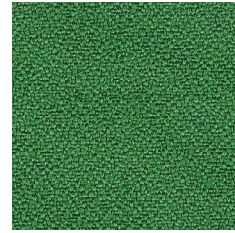
XR096



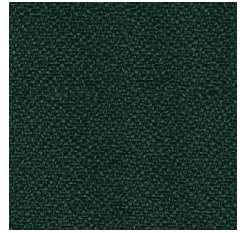
XR077



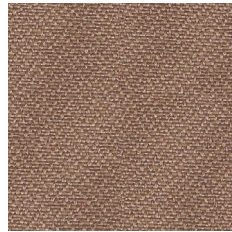
XR156



XR159



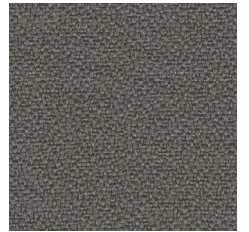
XR145



XR071



XR091



XR141



XR045



XR172



cigarette & match



high flame resistance



environmentally friendly



recycled origin



high abrasion resistance



confirmed safety



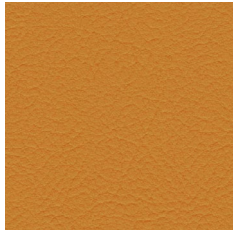
easy to disinfect

SPECIFICATION

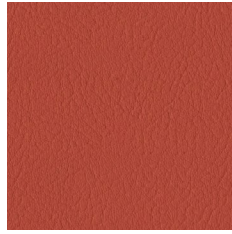
GO TO INDEX

VL | Valencia

by Spradling®



VL6012



VL6003



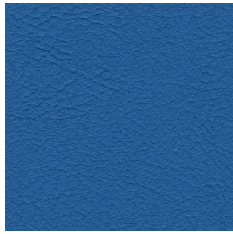
VL2074



VL2001



VL7001



VL3069



VL3067



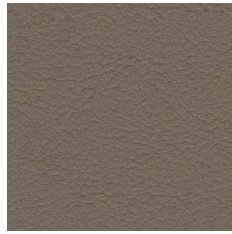
VL5001



VL5069



VL1048



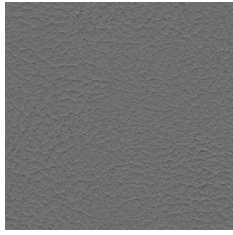
VL0034



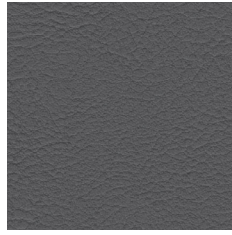
VL4041



VL0020



VL4045



VL4043



VL4003



VL9035

[GO TO INDEX](#)

[SPECIFICATION](#)



cigarette & match



high abrasion resistance



easily washable



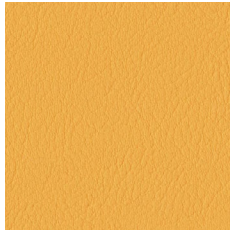
confirmed safety



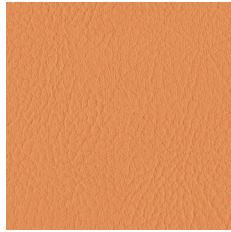
easy to disinfect



VL2020



VL2111



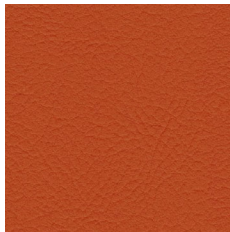
VL6013



VL2116



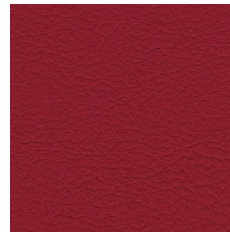
VL0035



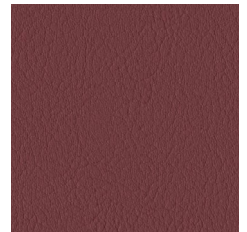
VL6019



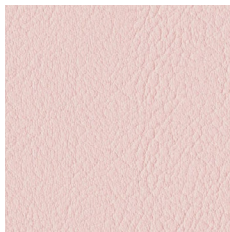
VL2112



VL2075



VL2062



VL2113



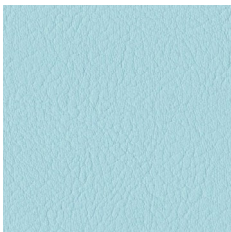
VL2114



VL2021



VL2002



VL2106



VL2107



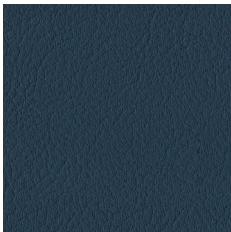
VL3001



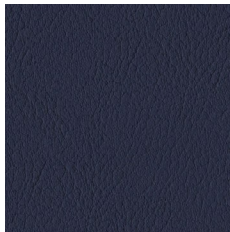
VL4042



VL5065



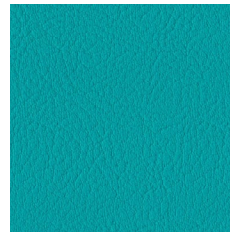
VL2108



VL3068



VL5056



VL5057



VL2119



VL2110



VL5041



cigarette & match



high abrasion resistance



easily washable



confirmed safety



easy to disinfect

SPECIFICATION

GO TO INDEX

VL | Valencia

by Spradling®

EXTENDED

2



VL1020



VL1049



VL1001



VL1050



VL2117



VL0002



VL8020



VL8032



VL4044



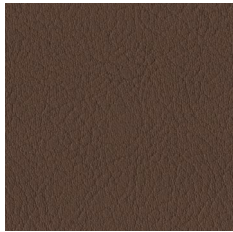
VL4001



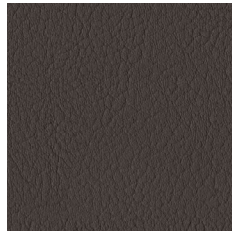
VL9001



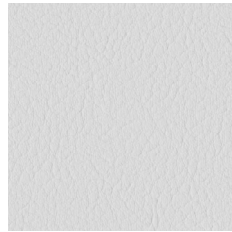
VL2115



VL0033



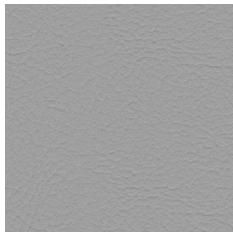
VL0001



VL9607



VL4020



VL4040



VL4002



VL5002

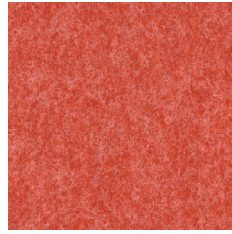


VL4052

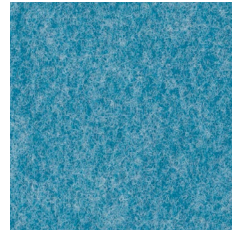


HG | Hush

by Gabriel®



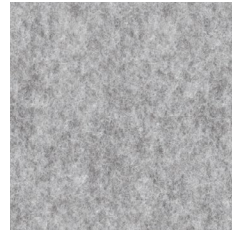
HG63058



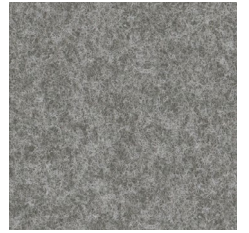
HG67046



HG68103



HG60158



HG60159

[SPECIFICATION](#)



cigarette & match



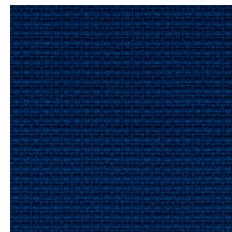
confirmed safety



easy to disinfect

YN | Urban

by Camira



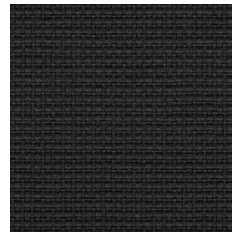
YN210



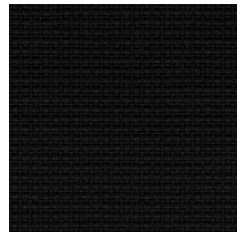
YN083



YN207



YN145



YN009

[SPECIFICATION](#)

[GO TO INDEX](#)



Cigarette & Match



High flame resistance



High abrasion resistance



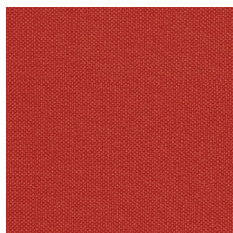
Recycled origin



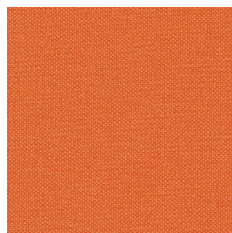
Confirmed safety

SX | Silvertex

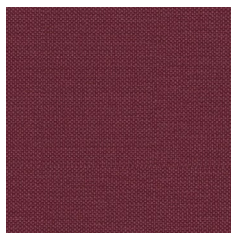
by Spradling®



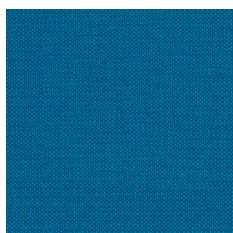
SX2012



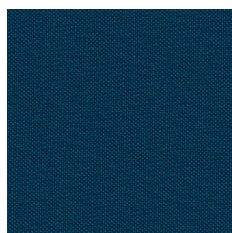
SX0013



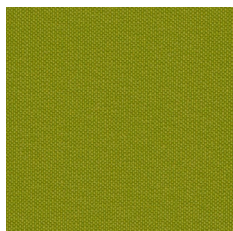
SX2016



SX3066



SX3007



SX5008



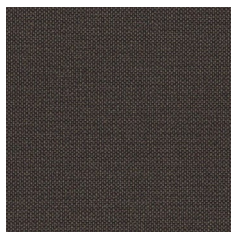
SX5020



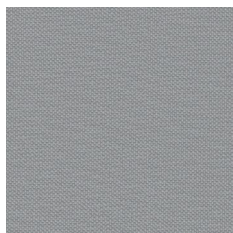
SX0001



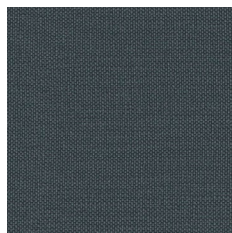
SX0009



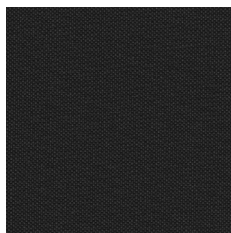
SX4024



SX4001



SX4002



SX9001

[GO TO INDEX](#)

[SPECIFICATION](#)



cigarette & match



high abrasion resistance



easily washable



confirmed safety



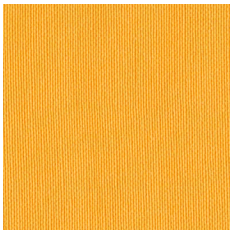
easy to disinfect



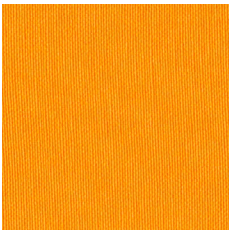
SX2089



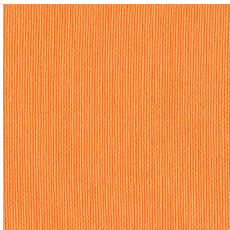
SX4004



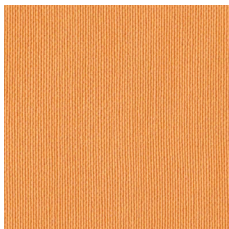
SX2093



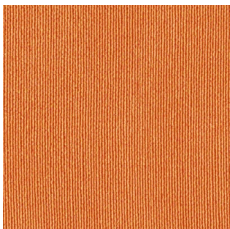
SX6065



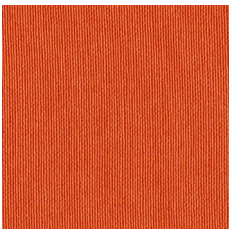
SX6062



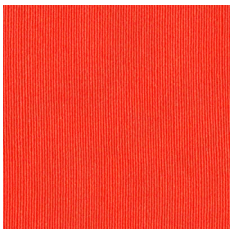
SX2105



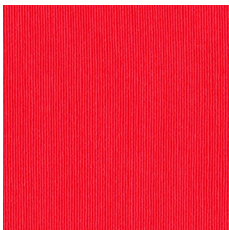
SX2003



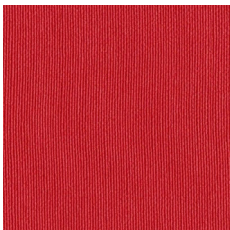
SX6061



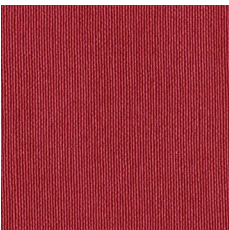
SX2096



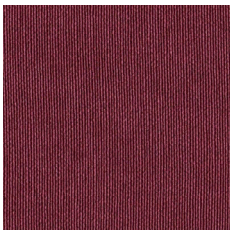
SX2095



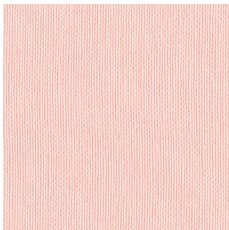
SX2011



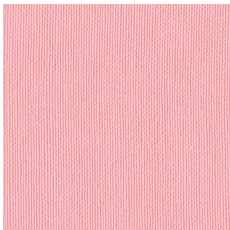
SX2064



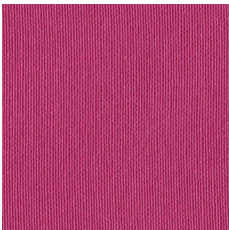
SX6004



SX2099



SX2098



SX2097



SX7001



cigarette & match



high abrasion resistance



easily washable



confirmed safety



easy to disinfect

SPECIFICATION

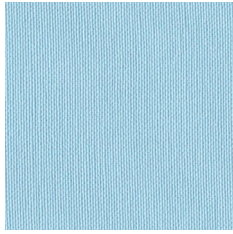
GO TO INDEX

SX | Silvertex

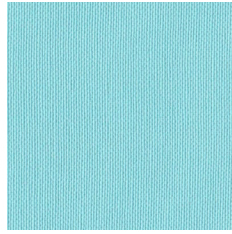
by Spradling®

EXTENDED

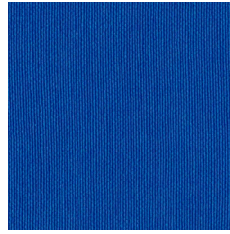
3



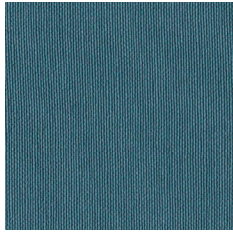
SX2103



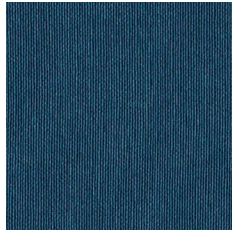
SX2102



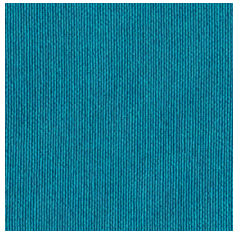
SX3067



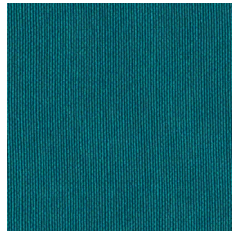
SX2094



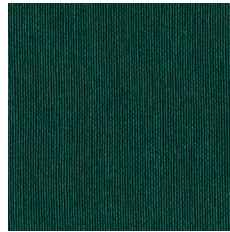
SX3068



SX3001



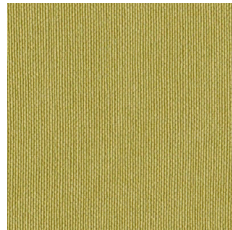
SX2100



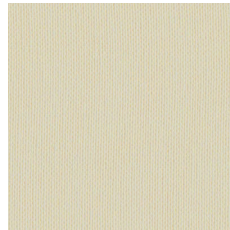
SX5063



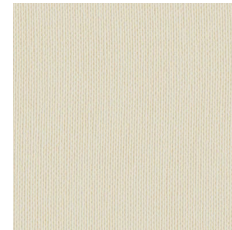
SX2092



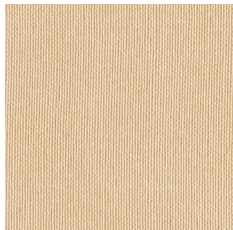
SX5019



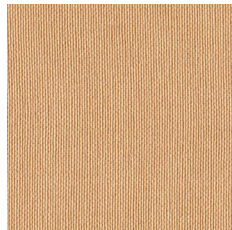
SX1077



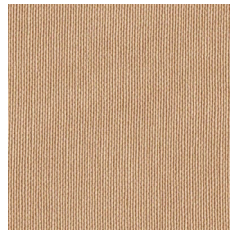
SX2090



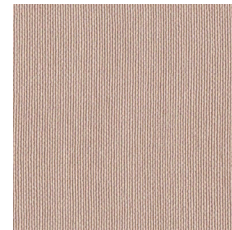
SX1051



SX1078



SX1010

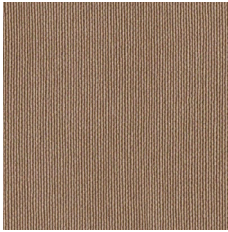


SX0002

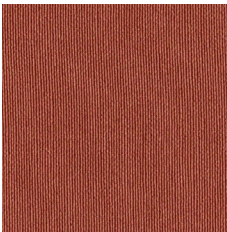




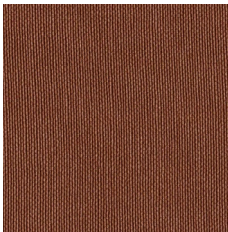
SX5009



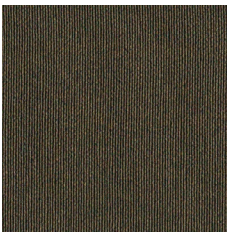
SX4012



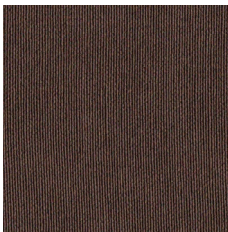
SX1014



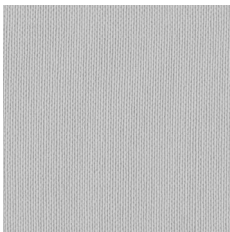
SX0073



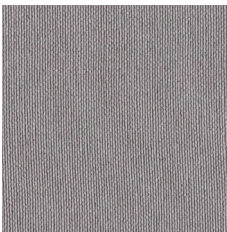
SX5010



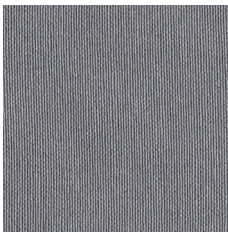
SX0005



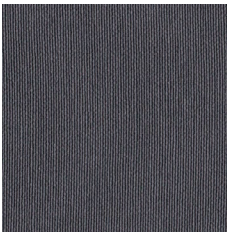
SX2101



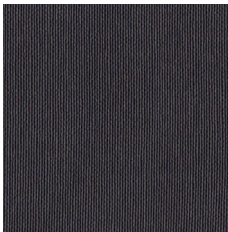
SX4011



SX4010



SX4003



SX9002



cigarette & match



high abrasion resistance



easily washable



confirmed safety



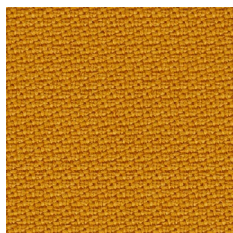
easy to disinfect

SPECIFICATION

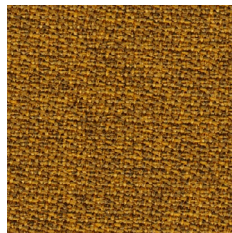
GO TO INDEX

STG/STMG | Step/Step Melange

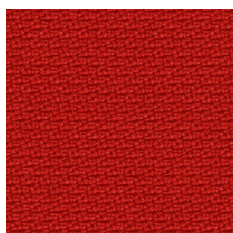
by Gabriel®



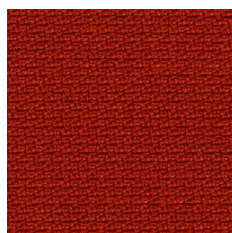
STG62057



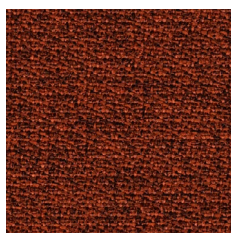
STMG62057



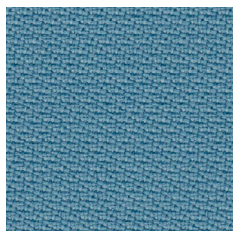
STG63012



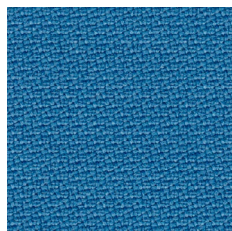
STG63075



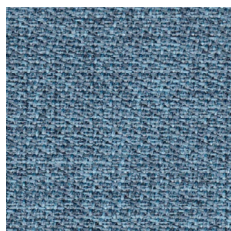
STMG63075



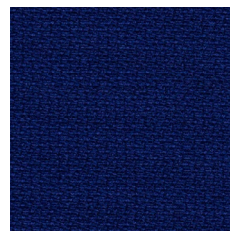
STG67004



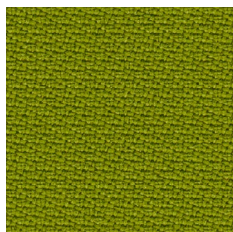
STG66018



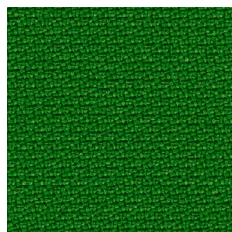
STMG67004



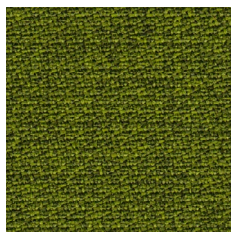
STG65011



STG68119



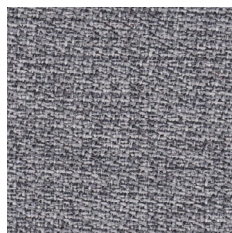
STG68120



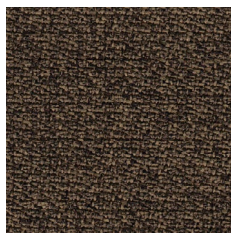
STMG68119



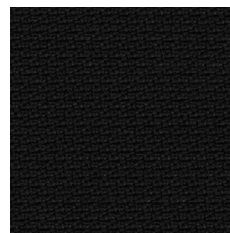
STMG61104



STMG60004



STMG61103



STG60999

[GO TO INDEX](#)

[SPECIFICATION](#)



cigarette & match



high flame resistance



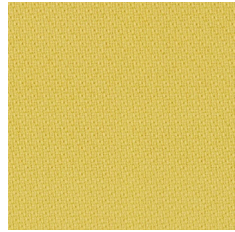
environmentally friendly



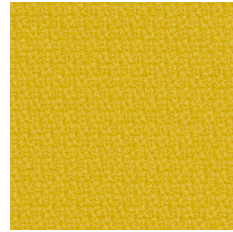
confirmed safety



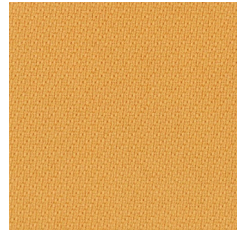
easy to disinfect



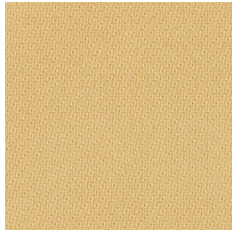
STG68701



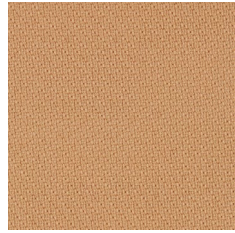
STG62073



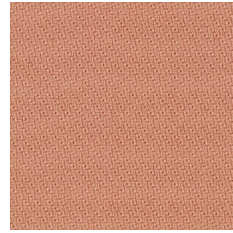
STG62746



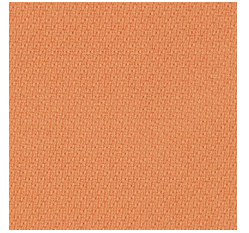
STG62744



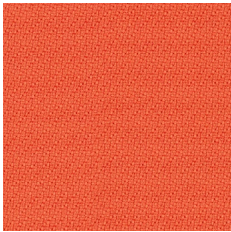
STG63736



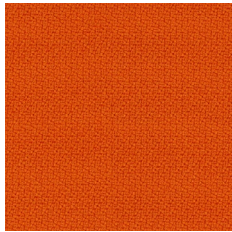
STG64767



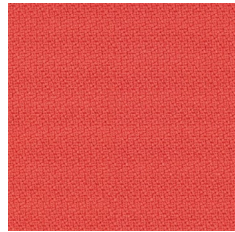
STG63739



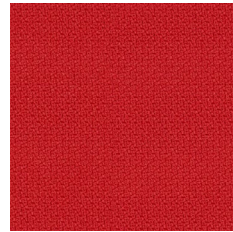
STG63738



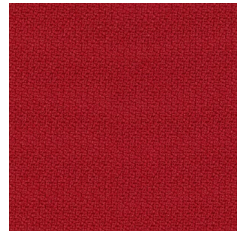
STG63082



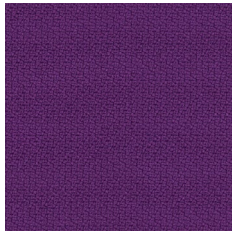
STG64178



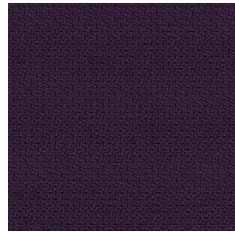
STG64179



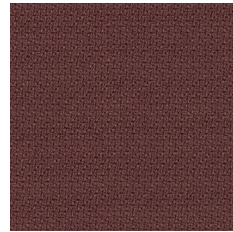
STG64013



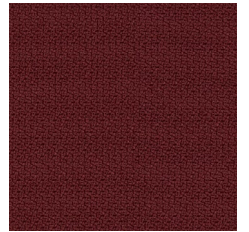
STG65023



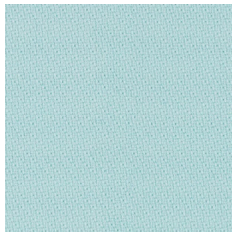
STG65047



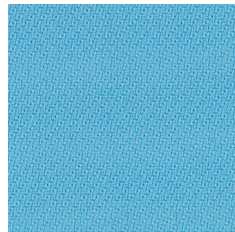
STG64770



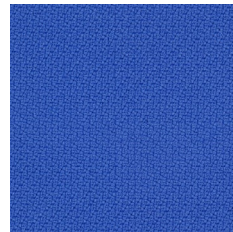
STG64159



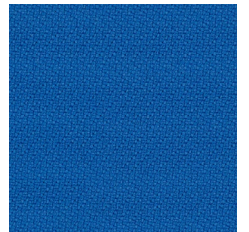
STG60746



STG67735



STG66150



STG66151



STG66149



STG65018



cigarette & match



high flame resistance



environmentally friendly



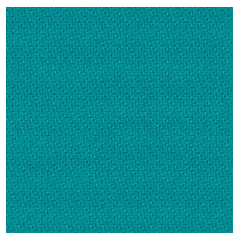
confirmed safety



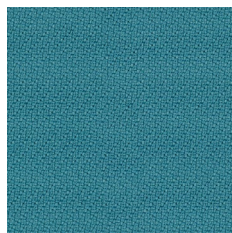
easy to disinfect

SPECIFICATION

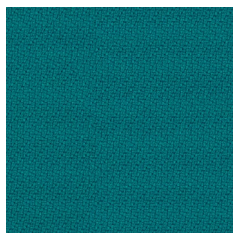
GO TO INDEX



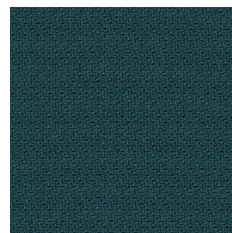
STG67073



STG67072



STG67007



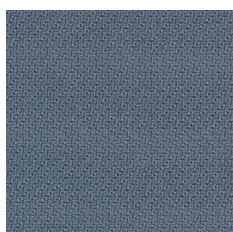
STG68158



STG66763



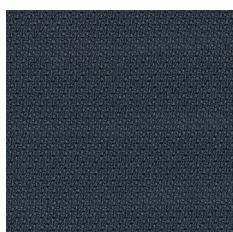
STG66764



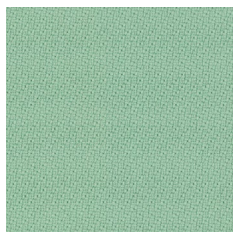
STG66152



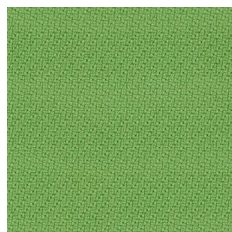
STG66148



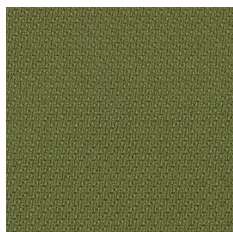
STG66765



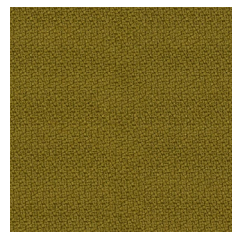
STG68118



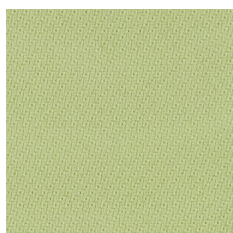
STG68159



STG68700



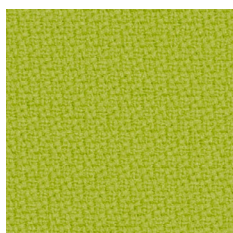
STG68165



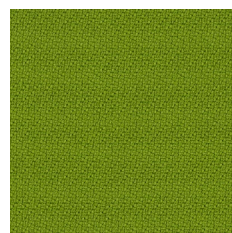
STG68798



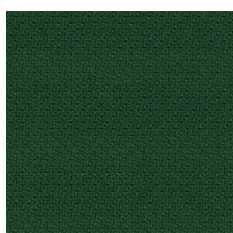
STG68799



STG68163



STG68162



STG68161



STG68121

for Nowy Styl and Kusch+Co



cigarette & match



high flame resistance



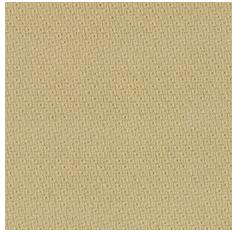
environmentally friendly



confirmed safety



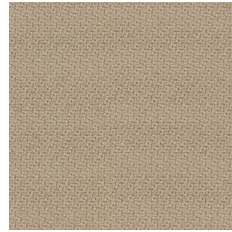
easy to disinfect



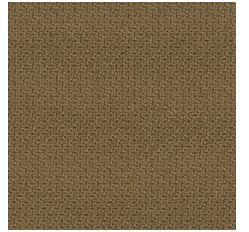
STG61787



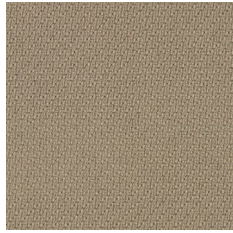
STG61788



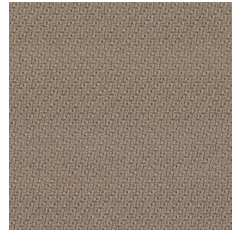
STG61149



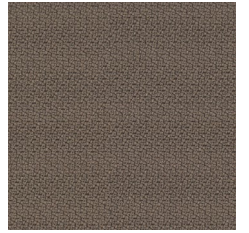
STG61103



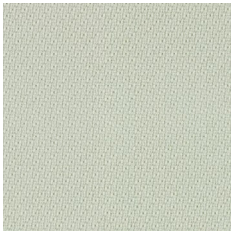
STG61791



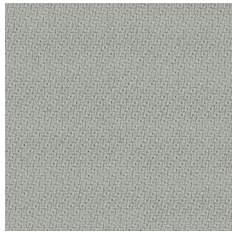
STG61789



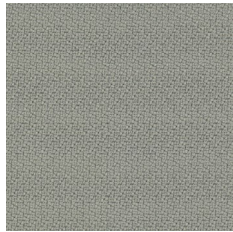
STG60090



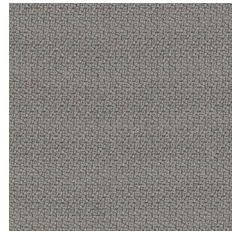
STG60745



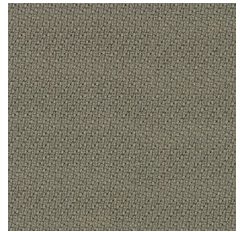
STG60004



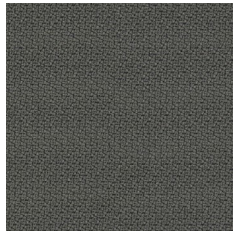
STG60091



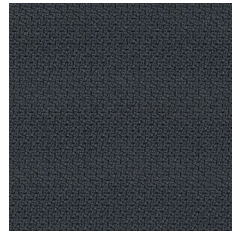
STG60011



STG61793



STG60092



STG66019



STG60021

for Nowy Styl and Kusch+Co



cigarette & match



high flame resistance



environmentally friendly



confirmed safety



easy to disinfect

SPECIFICATION

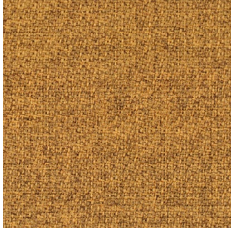
GO TO INDEX

STMG | Step Melange

by Gabriel®

EXTENDED

3



STMG62146



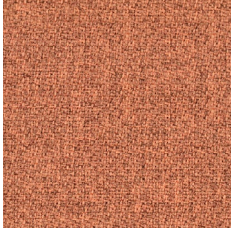
STMG62144



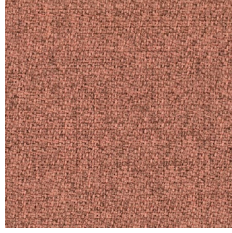
STMG62143



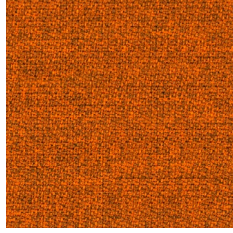
STMG63136



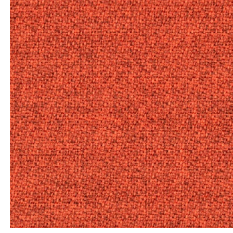
STMG63139



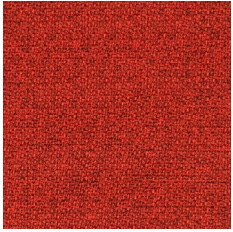
STMG64267



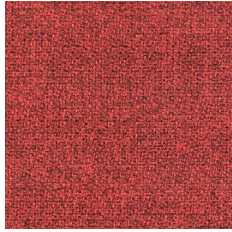
STMG63082



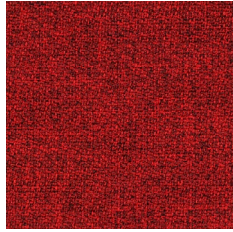
STMG63138



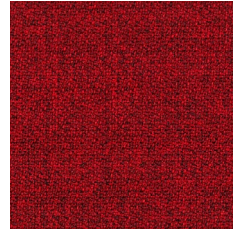
STMG63137



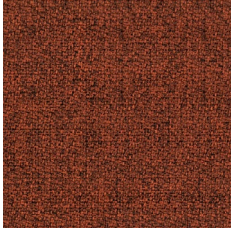
STMG64178



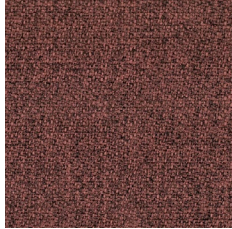
STMG64179



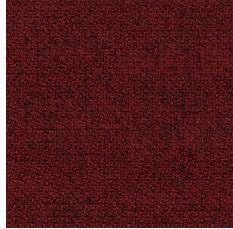
STMG64013



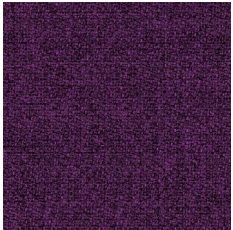
STMG61151



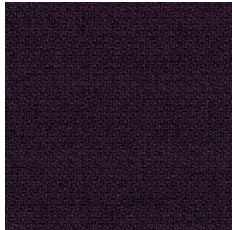
STMG64270



STMG64159



STMG65023

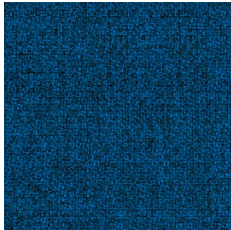


STMG65047

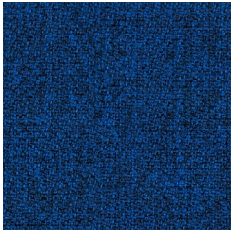


STMG | Step Melange

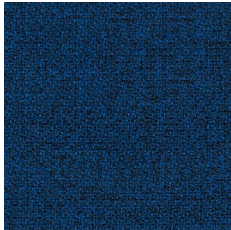
by Gabriel®



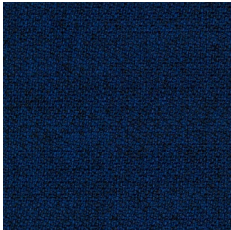
STMG66151



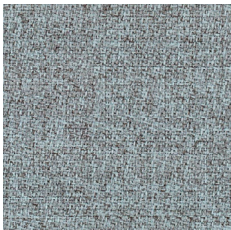
STMG66150



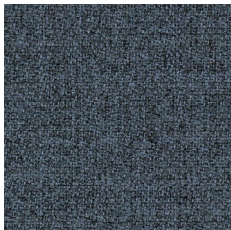
STMG66149



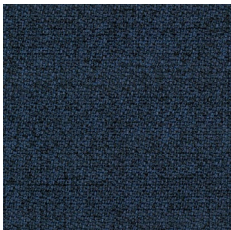
STMG65018



STMG60346



STMG66152



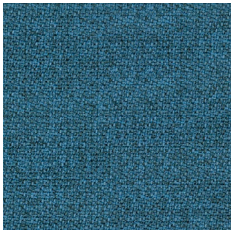
STMG66148



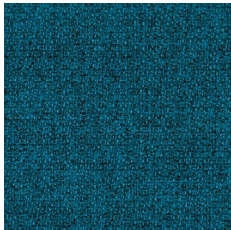
STMG66265



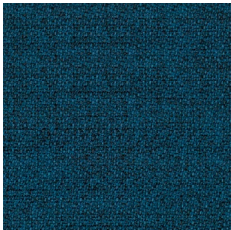
STMG65011



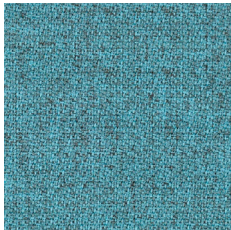
STMG66018



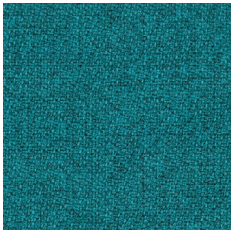
STMG66263



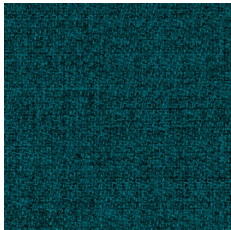
STMG66264



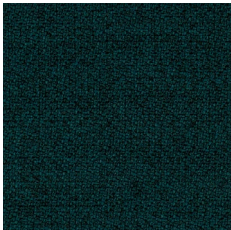
STMG67135



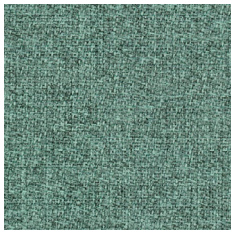
STMG67072



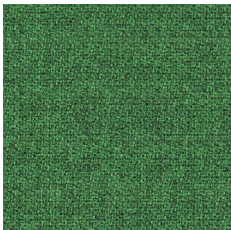
STMG67007



STMG68158



STMG68118



STMG68159



cigarette & match



high flame resistance



environmentally friendly



confirmed safety



easy to disinfect

SPECIFICATION

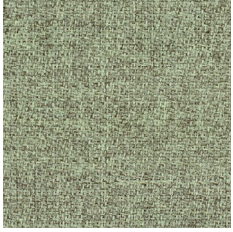
GO TO INDEX

STMG | Step Melange

by Gabriel®

EXTENDED

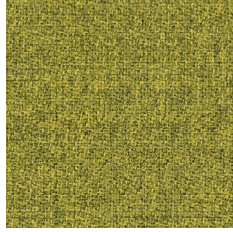
3



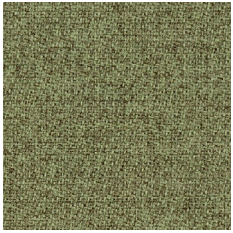
STMG68298



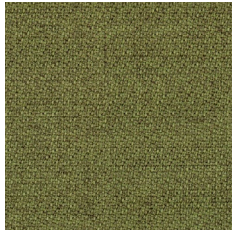
STMG68301



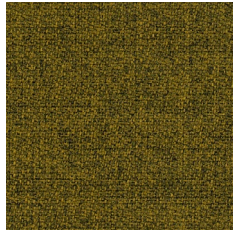
STMG62073



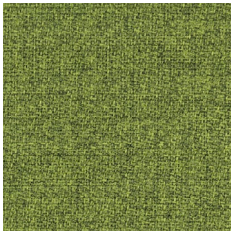
STMG68299



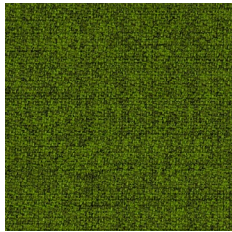
STMG68300



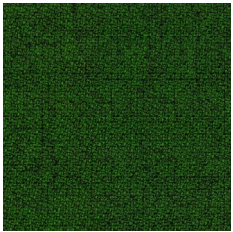
STMG68165



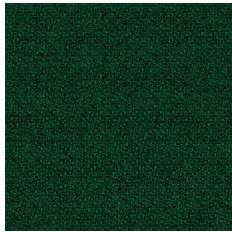
STMG68163



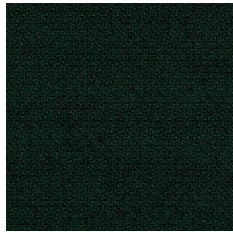
STMG68162



STMG68120



STMG68161



STMG68121



STMG | Step Melange

by Gabriel®



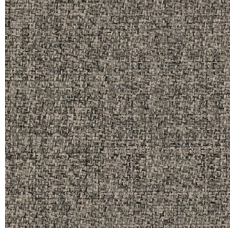
STMG61288



STMG61286



STMG61289



STMG61149



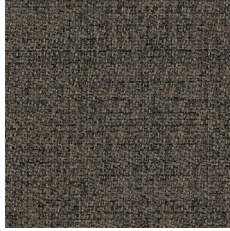
STMG61291



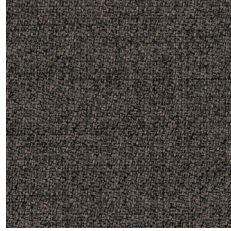
STMG61287



STMG61293



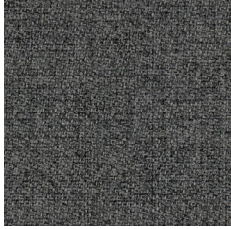
STMG61152



STMG60090



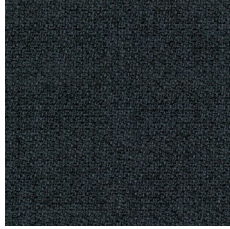
STMG60345



STMG60011



STMG60092



STMG66019



STMG60021



cigarette & match



high flame resistance



environmentally friendly



confirmed safety

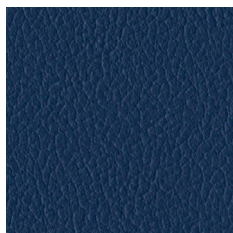


easy to disinfect

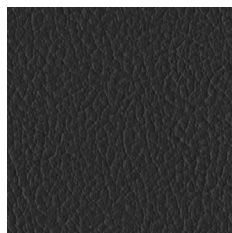
SPECIFICATION

GO TO INDEX

SP | Split Leather



SP06



SP01

EN front of the chair – Split Leather SP, back – Imitation Leather V, in matching colours

PL przód krzesła – Split Leather SP, tył – Imitation Leather V, w pasujących do siebie kolorach

DE Vorderseite der Stühle in Split Leather SP, Rückseite der Stühle in Imitation Leather V in identischen Farben

FR partie avant du siège en Split Leather SP, partie arrière en Imitation Leather V de la couleur correspondante

[GO TO INDEX](#)

[SPECIFICATION](#)



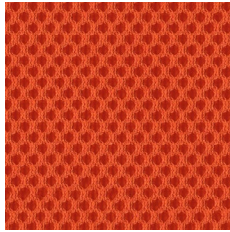
cigarette
& match



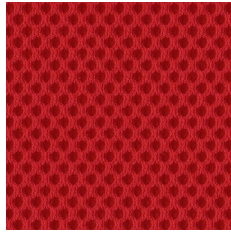
natural
origin

RN | Runner

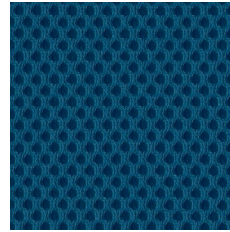
mesh 3D fabric by Gabriel®



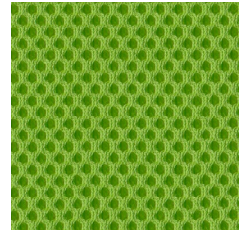
RN63034



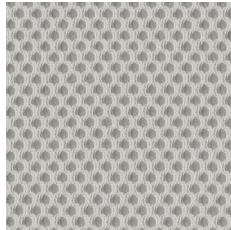
RN64089



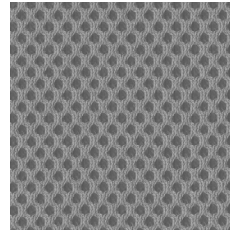
RN66140



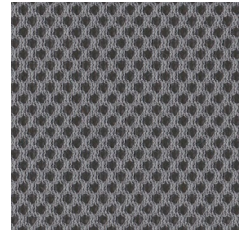
RN68056



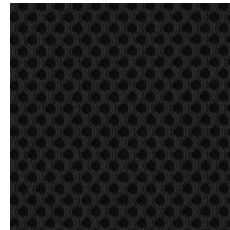
RN60061



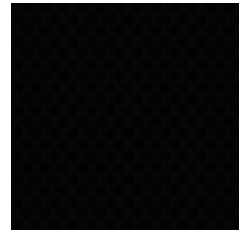
RN60165



RN60011



RN60025



RN60999



cigarette & match



confirmed safety



environmentally friendly



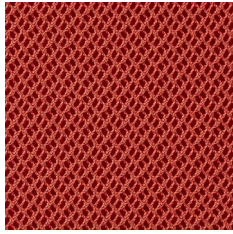
easy to disinfect

SPECIFICATION

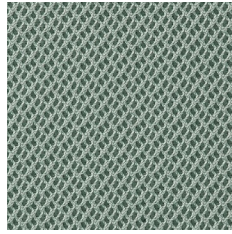
GO TO INDEX

RH | Rhythm

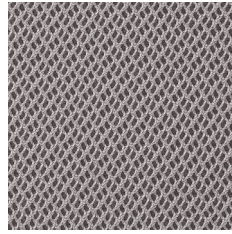
by Gabriel®



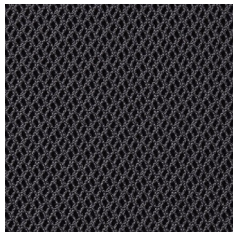
RH63067



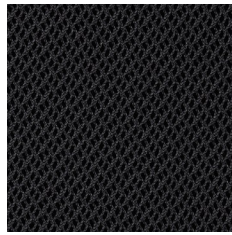
RH68121



RH60165



RH60025



RH60999

SPECIFICATION



Cigarette & Match



High flame resistance



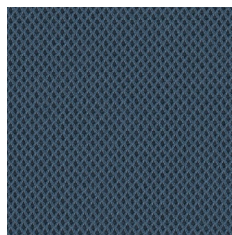
Confirmed safety

HQ | Harlequin

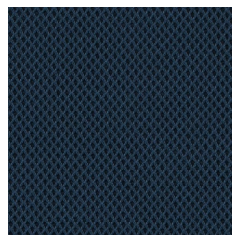
by Gabriel®



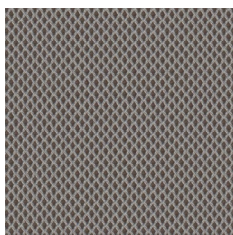
HQ60126



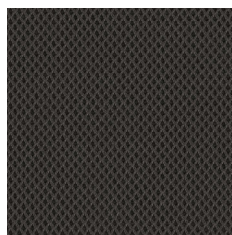
HQ66058



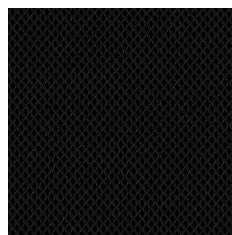
HQ60166



HQ61152



HQ61188



HQ60999



Cigarette & Match



High abrasion resistance



Recycled origin



Environmentally friendly



Confirmed safety

GO TO INDEX

SPECIFICATION

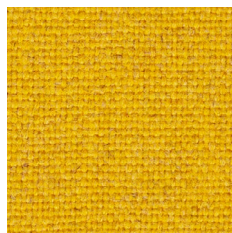


MLF | Main Line Flax

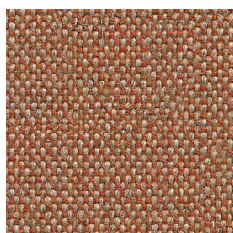
by Camira



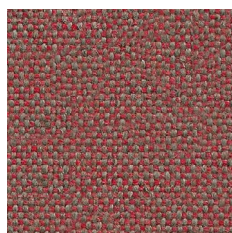
MLF20



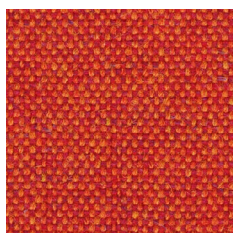
MLF17



MLF08



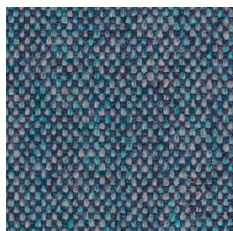
MLF03



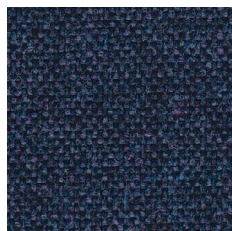
MLF13



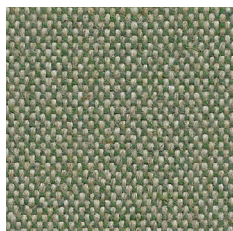
MLF01



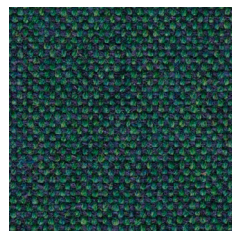
MLF22



MLF36



MLF09



MLF32



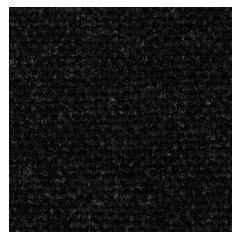
MLF23



MLF63



MLF16



MLF28

[GO TO INDEX](#)

[SPECIFICATION](#)



Cigarette & Match



High flame resistance



Environmentally friendly



Natural origin

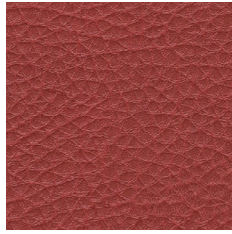


NF | skai® Parotega

by Continental



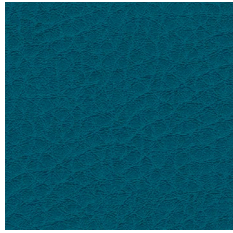
NF662



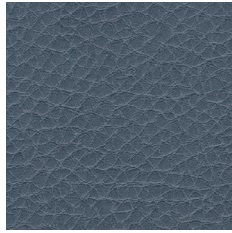
NF765



NF665



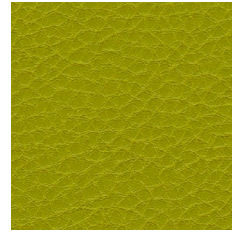
NF766



NF770



NF729



NF657



NF705



NF653



NF733



NF737



NF661



NF763



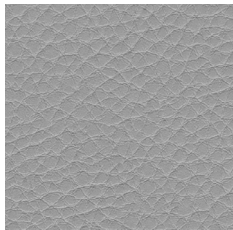
NF658



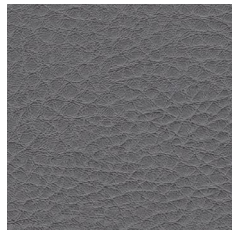
NF660



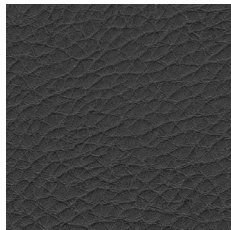
NF704



NF730



NF731



NF663



NF659

[GO TO INDEX](#)

[SPECIFICATION](#)



Cigarette & Match



High flame resistance



Natural origin



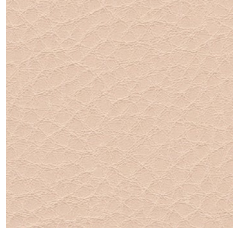
High abrasion resistance



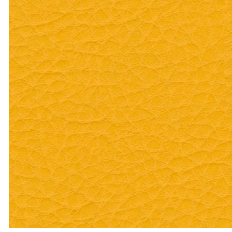
Easily washable



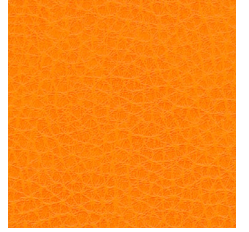
NF652



NF632



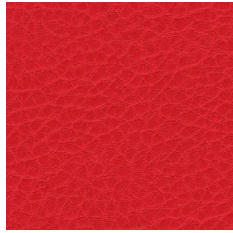
NF706



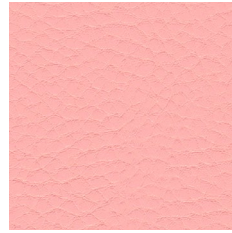
NF666



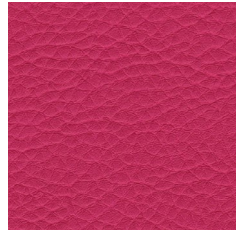
NF702



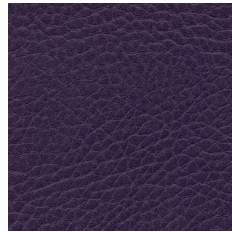
NF707



NF764



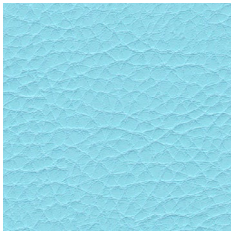
NF735



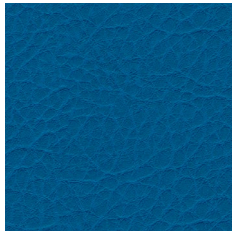
NF736



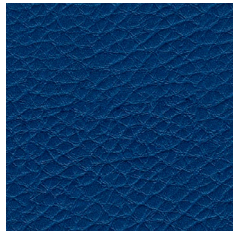
NF664



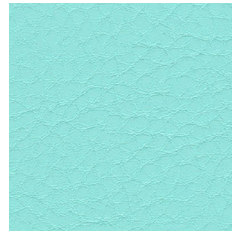
NF708



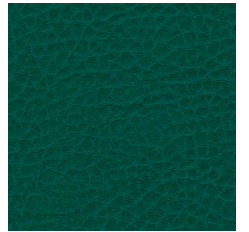
NF709



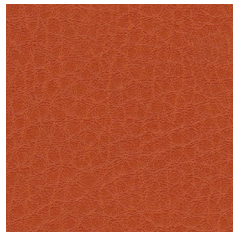
NF710



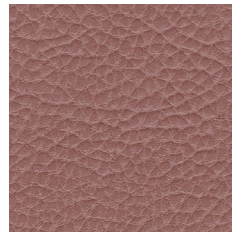
NF767



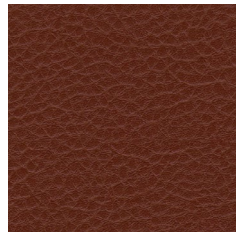
NF768



NF654



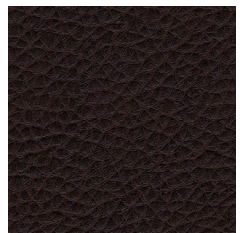
NF762



NF655



NF769



NF656



Cigarette & Match



High flame resistance



Natural origin



High abrasion resistance



Easily washable

SPECIFICATION

GO TO INDEX

CUZ | Blazer

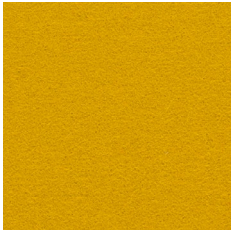
by Camira



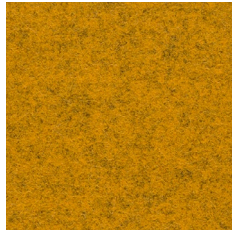
CUZ28



CUZ2Q



CUZ2W



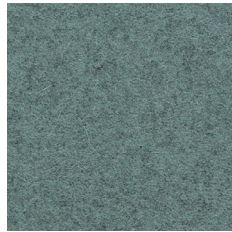
CUZ82



CUZ90



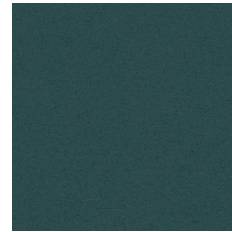
CUZ1R



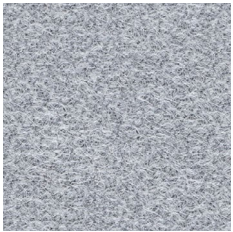
CUZ33



CUZ1N



CUZ1P



CUZ1E



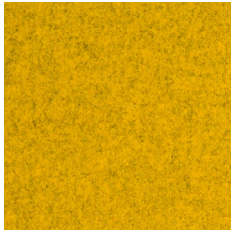
CUZ30



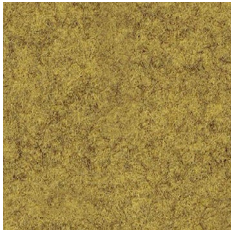
CUZ62



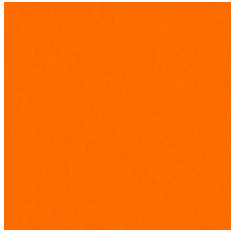
CUZ08



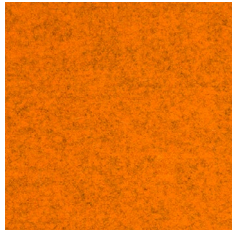
CUZ3M



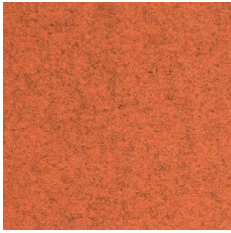
CUZ58



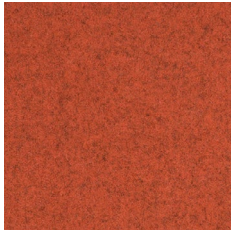
CUZ4R



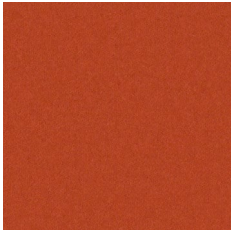
CUZ3S



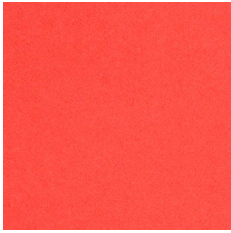
CUZ3L



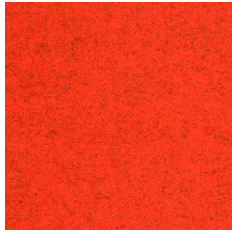
CUZ4L



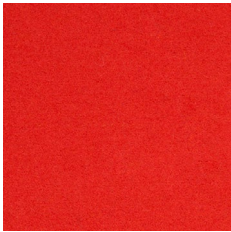
CUZ4U



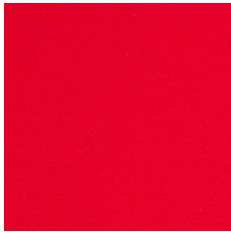
CUZ4N



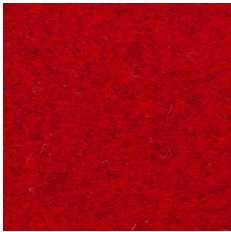
CUZ3Q



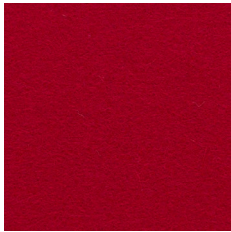
CUZ39



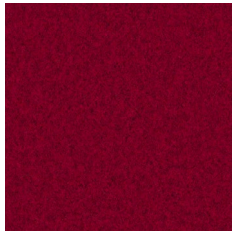
CUZ18



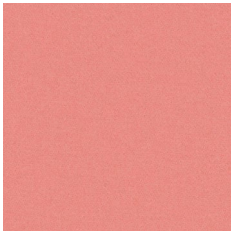
CUZ63



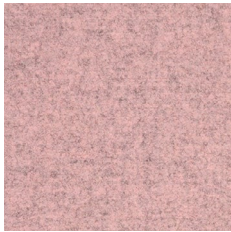
CUZ13



CUZ3W



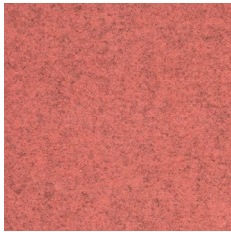
CUZ4Q



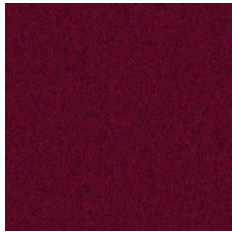
CUZ3N



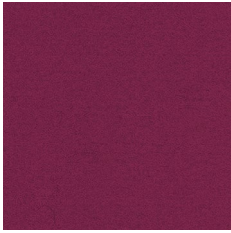
CUZ3T



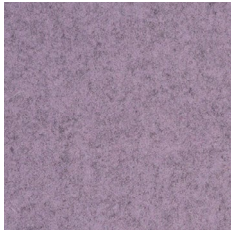
CUZ3P



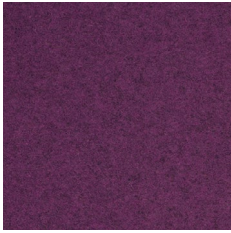
CUZ3V



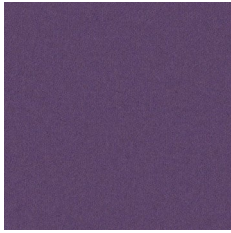
CUZ21



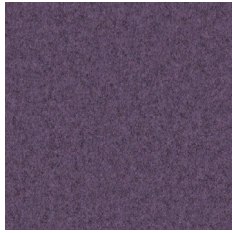
CUZ4M



CUZ2T



CUZ4T



CUZ4C

CUZ | Blazer

by Camira

EXTENDED

4



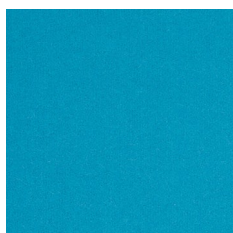
CUZ2Z



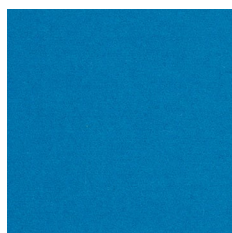
CUZ4J



CUZ4H



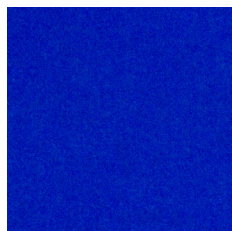
CUZ02



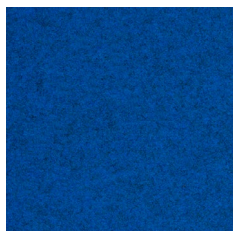
CUZ2U



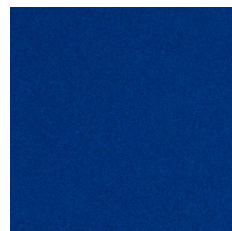
CUZ1V



CUZ4P



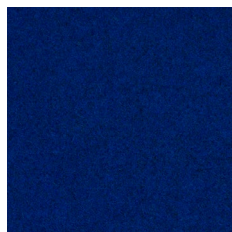
CUZ3Z



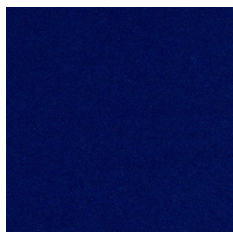
CUZ26



CUZ1Y



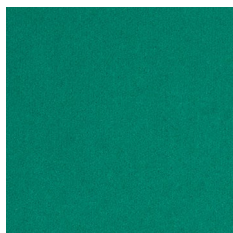
CUZ3X



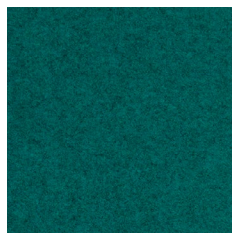
CUZ09



CUZ1W



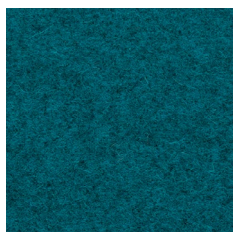
CUZ3A



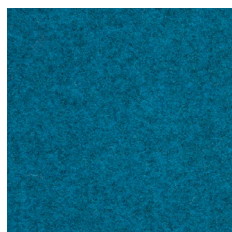
CUZ4F



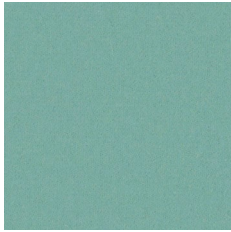
CUZ4G



CUZ3B



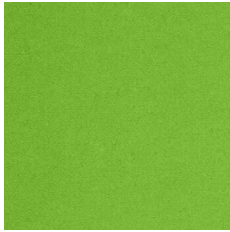
CUZ4B



CUZ4S



CUZ4K



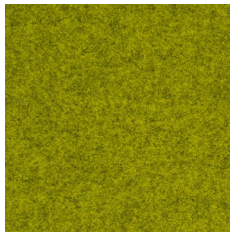
CUZ1L



CUZ3U



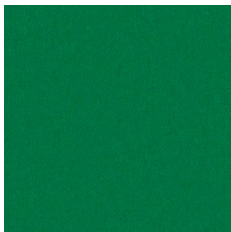
CUZ53



CUZ1F



CUZ1K



CUZ4V



CUZ3Y



CUZ3R



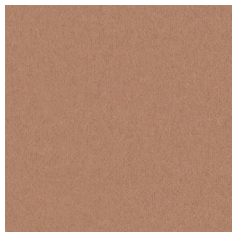
CUZ4E



CUZ47



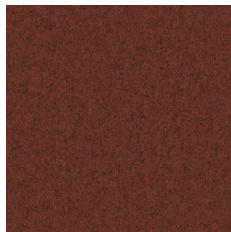
CUZ86



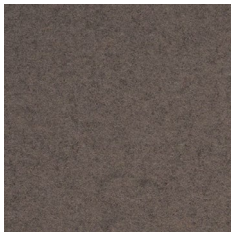
CUZ4X



CUZ4A



CUZ4D



CUZ31



CUZ4W



CUZ1J



CUZ12



CUZ35



CUZ67



cigarette & match



natural origin

SPECIFICATION

GO TO INDEX

LTH | Blazer Lite

by Camira



LTH47



LTH49



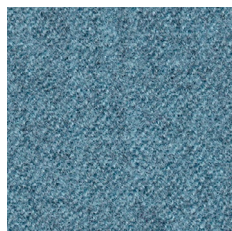
LTH46



LTH52



LTH63



LTH64

for Nowy Styl

[GO TO INDEX](#)

[SPECIFICATION](#)



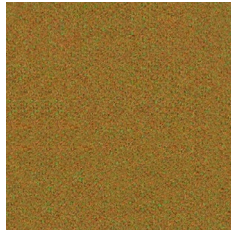
cigarette & match



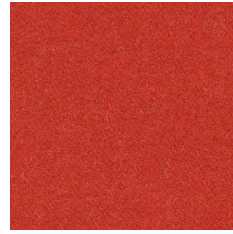
natural origin



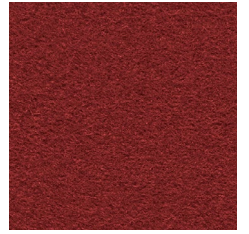
LDS08



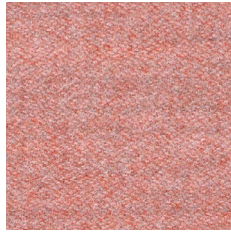
LDS43



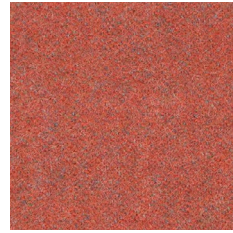
LDS84



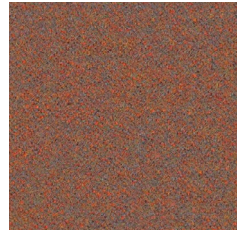
LDS79



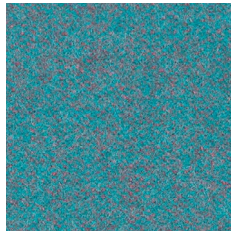
LDS74



LDS73



LDS76



LDS56



LDS54



LDS49



LDS32



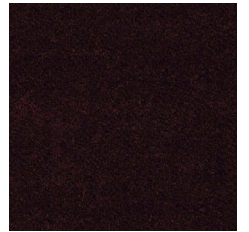
LDS33



LDS37



LDS39



LDS88



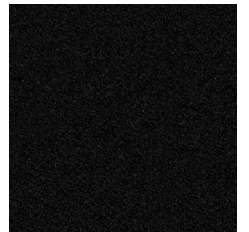
LDS16



LDS60



LDS17



LDS27

for Nowy Styl and Kusch+Co



cigarette & match



high abrasion resistance



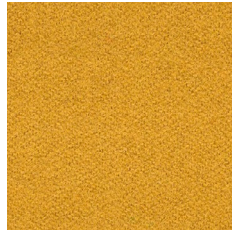
environmentally friendly

SPECIFICATION

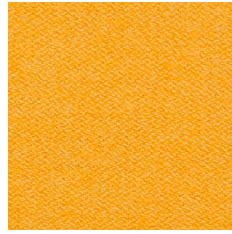
GO TO INDEX



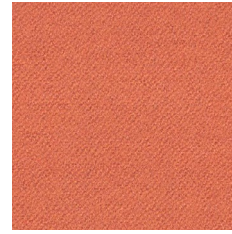
LDS45



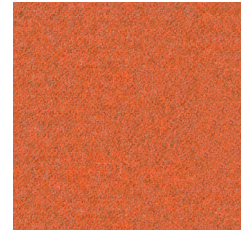
LDS28



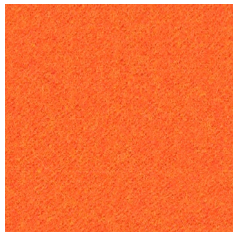
LDS44



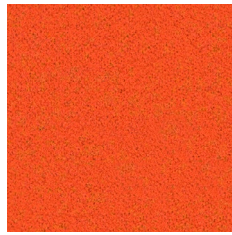
LDS75



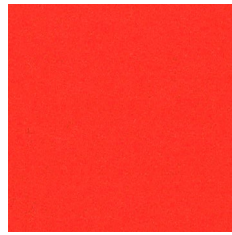
LDS83



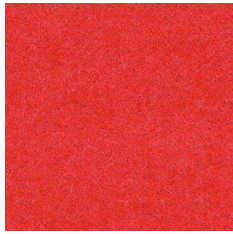
LDS82



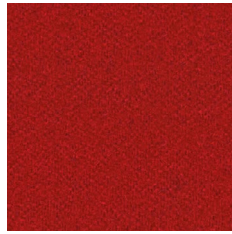
LDS81



LDS80



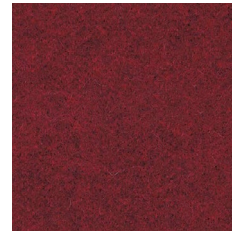
LDS71



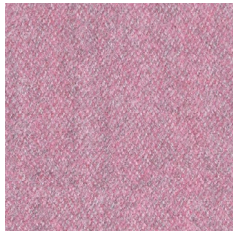
LDS86



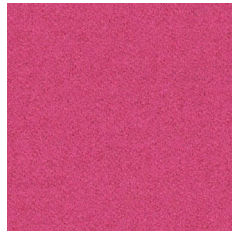
LDS85



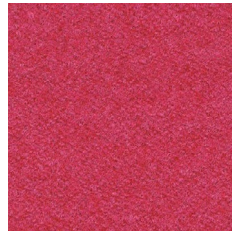
LDS87



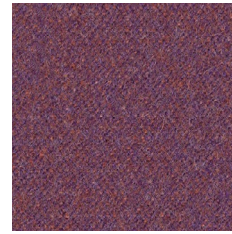
LDS07



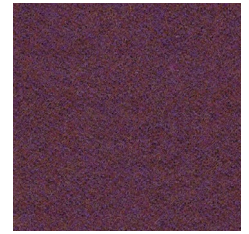
LDS72



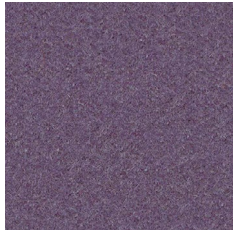
LDS36



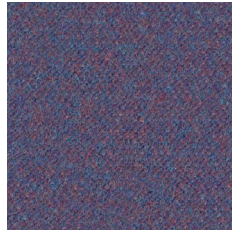
LDS66



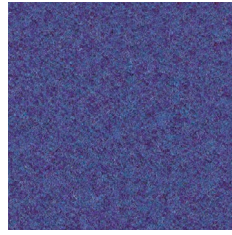
LDS70



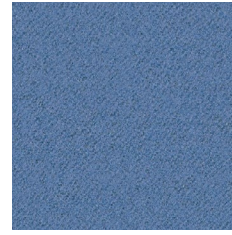
LDS67



LDS64



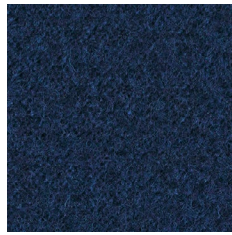
LDS68



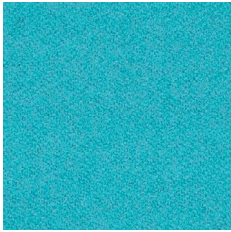
LDS65



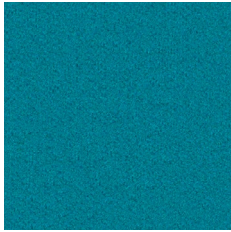
LDS63



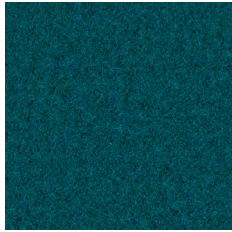
LDS62



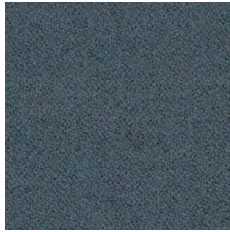
LDS55



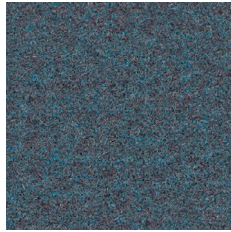
LDS57



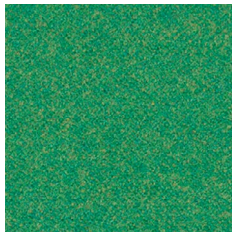
LDS59



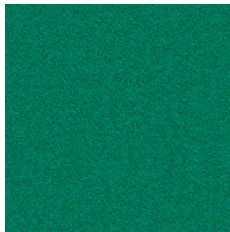
LDS24



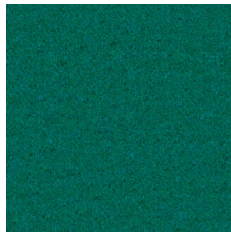
LDS58



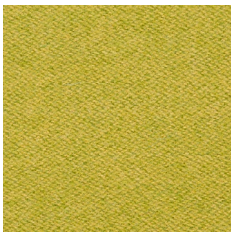
LDS53



LDS52



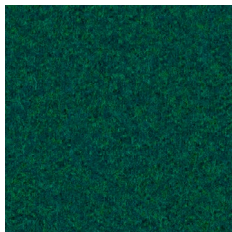
LDS51



LDS46



LDS47



LDS50



LDS42



LDS41



LDS23



LDS48



LDS20



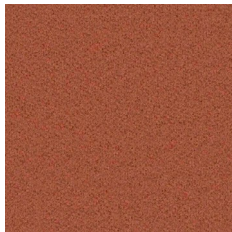
LDS19



LDS18



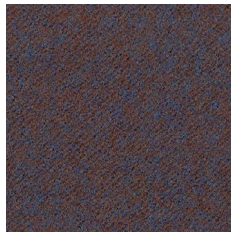
LDS22



LDS77



LDS78



LDS38



cigarette & match



high abrasion resistance



environmentally friendly

SPECIFICATION

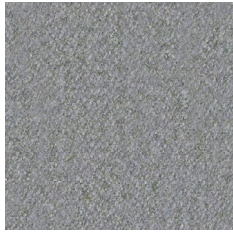
GO TO INDEX

LDS | Synergy

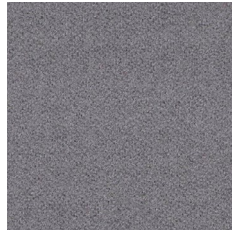
by Camira

EXTENDED

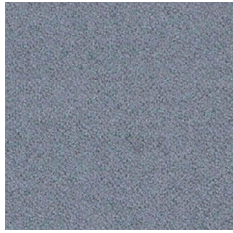
4



LDS05



LDS31



LDS21



LDS35



LDS29



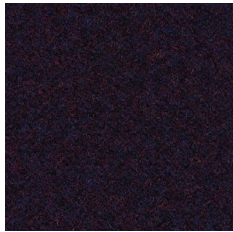
LDS34



LDS69



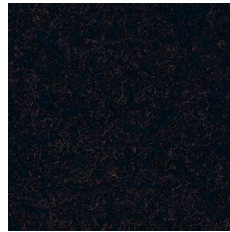
LDS25



LDS61



LDS26



LDS40

FYR | 24/7 Flax

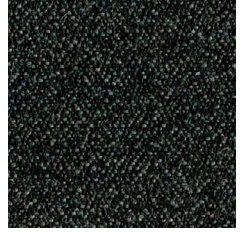
by Camira



FYR03



FYR21



FYR06

[SPECIFICATION](#)



cigarette & match



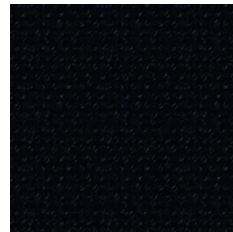
high flame resistance



heavy duty

AS | Hi-Tech

by Camira



AS064



AS078



cigarette & match



antistatic

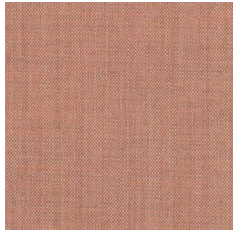
[SPECIFICATION](#)

[GO TO INDEX](#)

RX | Remix 3

by Kvadrat

5



RX612



RX452



RX662



RX362



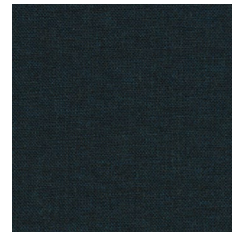
RX743



RX866



RX716



RX873



RX933



RX842



RX982



RX242



RX606



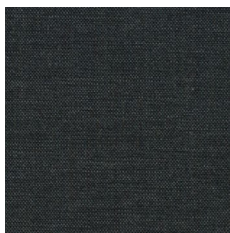
RX123



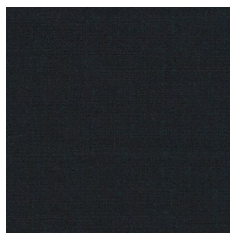
RX143



RX163



RX173



RX196

EN due to natural origin of the woolen yarn, minor slubs on the fabric may occur – this is not a flaw and does not affect the product quality

PL ze względu na naturalne pochodzenie przędzy wełnianej, na tkaninie mogą występować drobne zgrubienia - nie jest to wadą i nie ma wpływu na jakość produktu

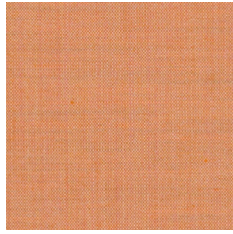
DE Aufgrund der natürlichen Beschaffenheit des Wollgewebes kann es zu kleinen Fadenverdickungen auf dem Stoff kommen – dies ist kein Mangel und beeinträchtigt nicht die Produktqualität

FR vu l'origine naturelle des fils de laine, des grosseurs mineures peuvent apparaître sur le tissu - ceci ne constitue pas un défaut et n'impacte pas la qualité du produit

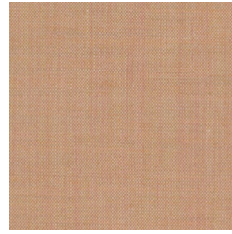




RX113



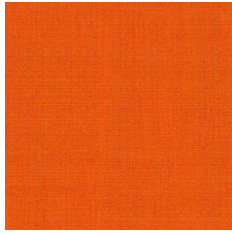
RX516



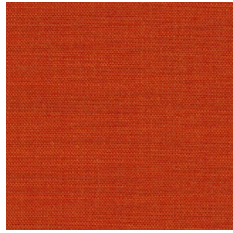
RX406



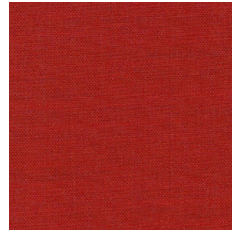
RX326



RX536



RX543



RX643



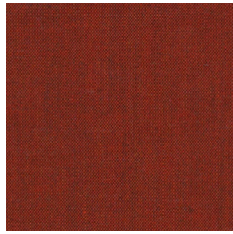
RX632



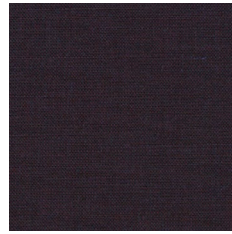
RX443



RX653



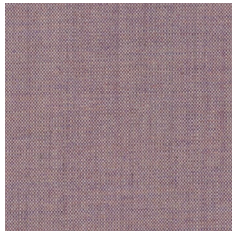
RX566



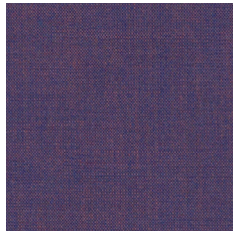
RX692



RX383



RX682



RX686



RX816



RX762



RX823



RX906



RX266



RX733



RX836



RX753



RX773



cigarette & match



high abrasion resistance



confirmed safety



environmentally friendly

SPECIFICATION

GO TO INDEX

RX | Remix 3

by Kvadrat

EXTENDED

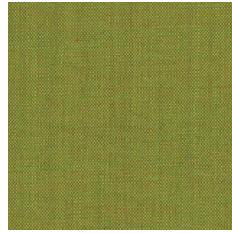
5



RX223



RX923



RX912



RX942



RX412



RX962



RX954



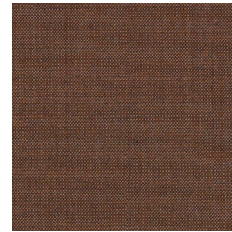
RX252



RX433



RX422



RX346



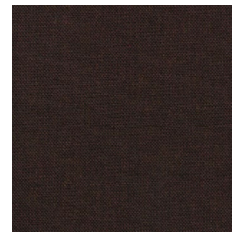
RX233



RX672



RX356



RX373





RX | Remix 3

by Kvadrat

EXTENDED

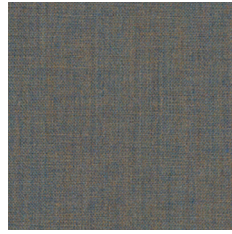
5



RX126



RX136



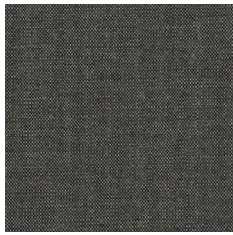
RX722



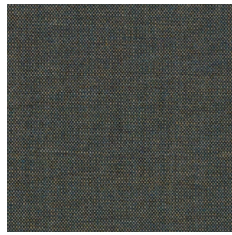
RX133



RX276



RX152



RX852



RX973



RX996



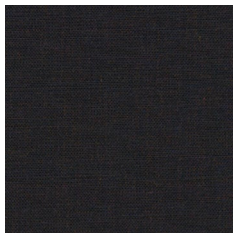
RX286



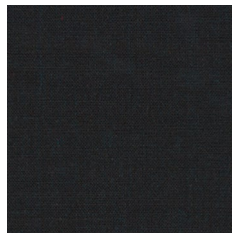
RX796



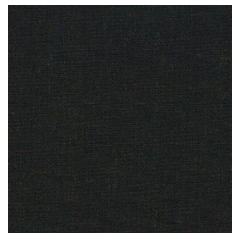
RX183



RX783



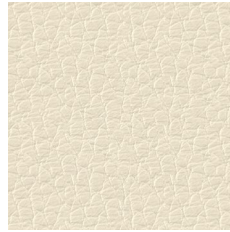
RX296



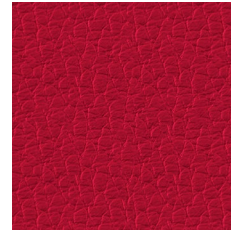
RX393



SD | Fine Leather



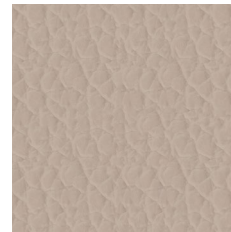
SD06



SD15



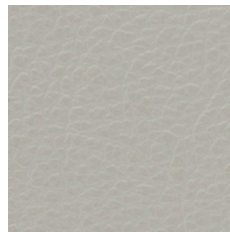
SD08



SD16



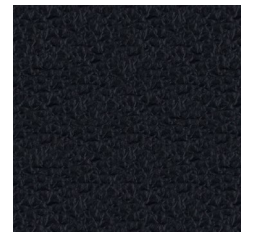
SD09



SD18



SD19



SD01

SPECIFICATION

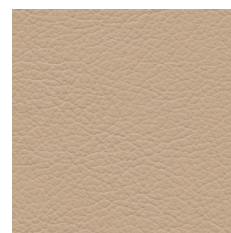


cigarette
& match

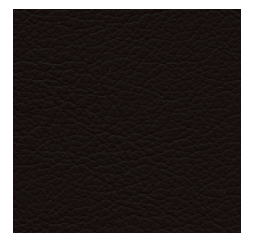


natural
origin

LE | Fine Leather



LE06



LE01

- EN * front of the chair - Fine Leather SD/LE, back - Imitation Leather V, in matching colours
- PL * przód krzesła - Fine Leather SD/LE, tył - Imitation Leather V, w pasujących do siebie kolorach
- DE * Vorderseite der Stühle in Fine Leather SD/LE, Rückseite der Stühle in Imitation Leather V in identischen Farben
- FR * partie avant du siège en Fine Leather SD/LE, partie arrière en Imitation Leather V de la couleur correspondante



cigarette
& match



natural
origin

SPECIFICATION

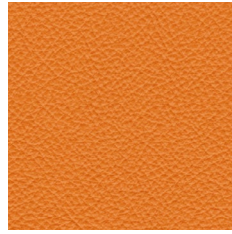
GO TO INDEX



NAP10002



NAP10043



NAP10031



NAP10033



NAP10021



NAP10019



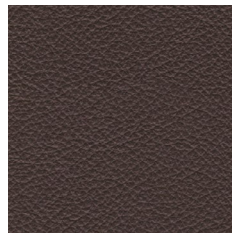
NAP10026



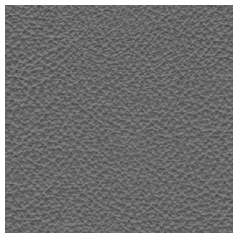
NAP10036



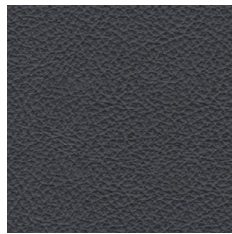
NAP10009



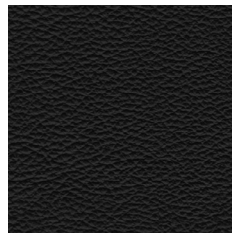
NAP10039



NAP10028



NAP10029



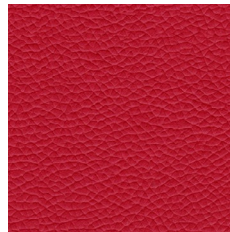
NAP10001



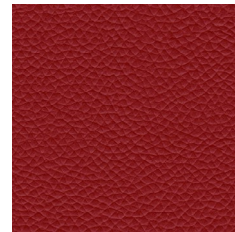
AN3653



AN2414



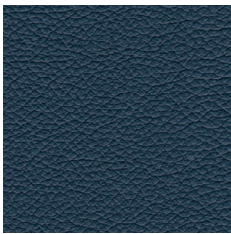
AN4607



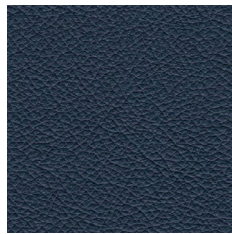
AN4366



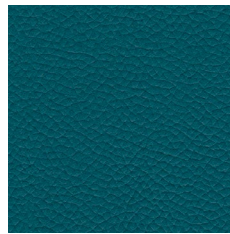
AN4671



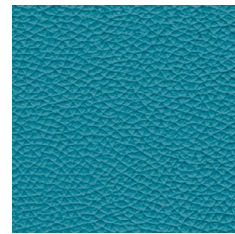
AN5215



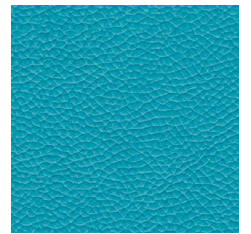
AN5005



AN5122



AN5627



AN5885



AN3214



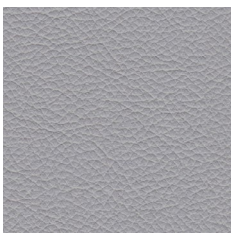
AN2334



AN2266



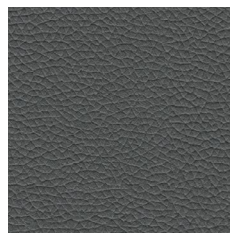
AN2030



AN1667



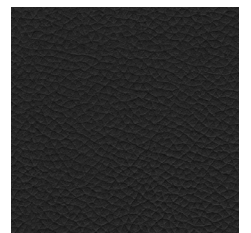
AN1463



AN1227



AN5180



AN1000



Cigarette & Match



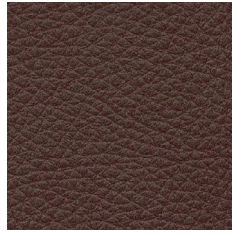
Natural origin

SPECIFICATION

GO TO INDEX



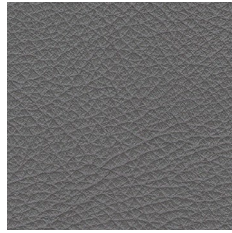
GR19167



GR89135



GR79173



GR79134



GR79164



GR99123



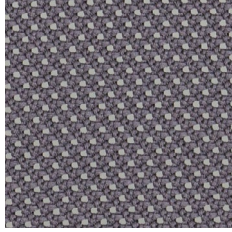
Other

AX | Mesh

for Xilium



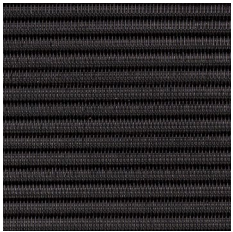
AX01



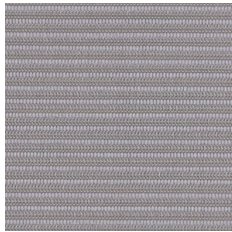
AX02

WX | Mesh

for Xilium



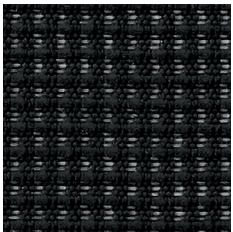
WX01



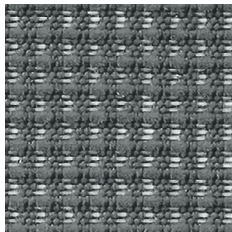
WX02

MX | Mesh

for Xenium

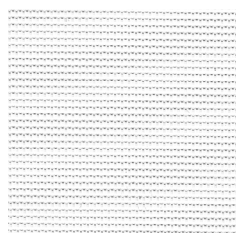


XNSW

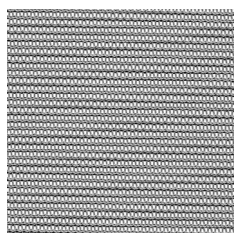


XNGR

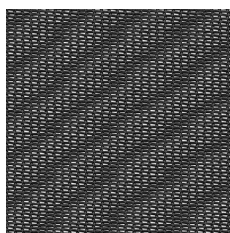
OP | Mesh



OP20



OP25

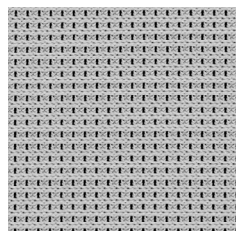


OP24N

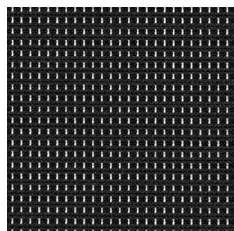
- EN Mesh OP for selected chairs, details in price lists
- PL Mesh OP do wybranych krzeseł, szczegóły w cennikach
- DE Mesh OP für ausgewählte Stühle, Details in den Preislisten
- FR Mesh OP uniquement pour les sièges sélectionnés, pour plus d'informations veuillez vous reporter aux tarifs publics

MF | Mesh

for Navigo



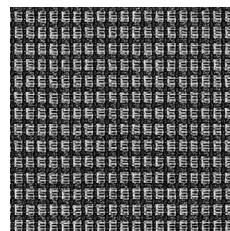
MF02



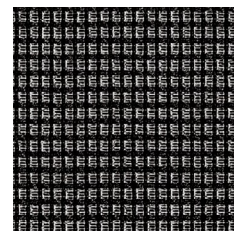
MF01

NTS | Mesh

for Sail

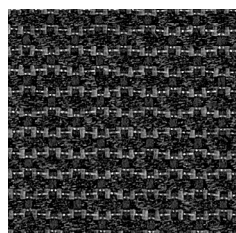


NTS02

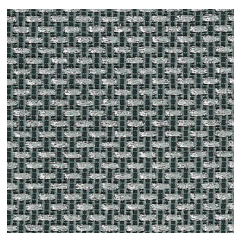


NTS01

KR.4921 | Mesh



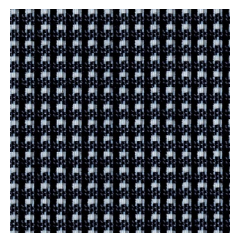
KR.
4921.10



KR.
4921.16

Mesh

for Papilio



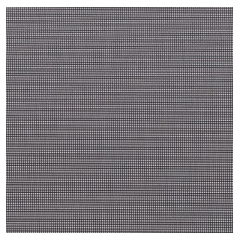
KR.4716.10

- EN Mesh KR.4921 for selected chairs, details in price lists
- PL Mesh KR.4921 do wybranych krzeseł, szczegóły w cennikach
- DE Mesh KR.4921 für ausgewählte Stühle, Details in den Preislisten
- FR Mesh KR.4921 uniquement pour les sièges sélectionnés, pour plus d'informations veuillez vous reporter aux tarifs publics

[SPECIFICATION](#)

[GO TO INDEX](#)

Mesh

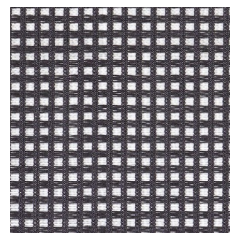


PX01

- EN Mesh PX01 for selected chairs, details in price lists
- PL Mesh PX01 do wybranych krzeseł, szczegóły w cennikach
- DE Mesh PX01 für ausgewählte Stühle, Details in den Preislisten
- FR Mesh PX01 uniquement pour les sièges sélectionnés, pour plus d'informations veuillez vous reporter aux tarifs publics

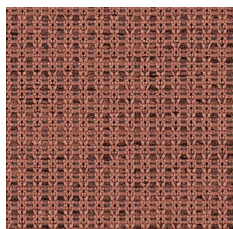
Mesh

for @-Motion / Net Motion

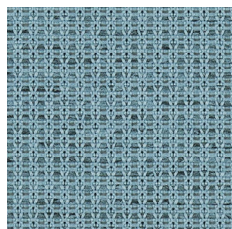


PX02

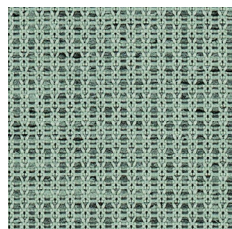
MT | Mesh



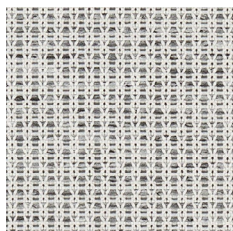
MT64210



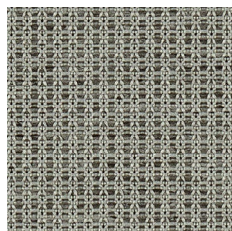
MT66185



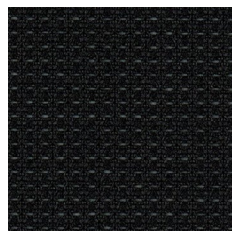
MT67089



MT60122



MT60123



MT60999

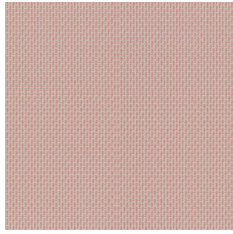
- EN Mesh MT for selected chairs, details in price lists
- PL Mesh MT do wybranych krzeseł, szczegóły w cennikach
- DE Mesh MT für ausgewählte Stühle, Details in den Preislisten
- FR Mesh MT uniquement pour les sièges sélectionnés, pour plus d'informations veuillez vous reporter aux tarifs publics

[GO TO INDEX](#)

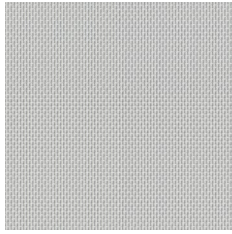
[SPECIFICATION](#)

MV | Mesh

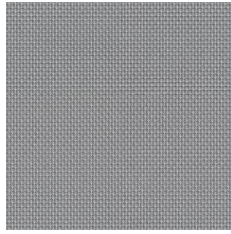
for Souly



MV1501
Pink



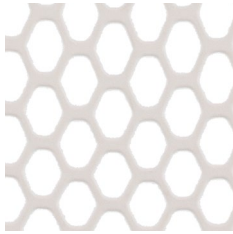
MV1001
Light Grey



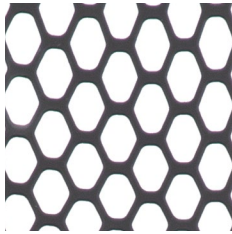
MV1201
Grey

Elasto-net

for YouTEAM™

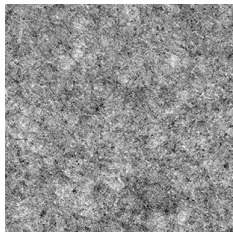


Pearl White PW

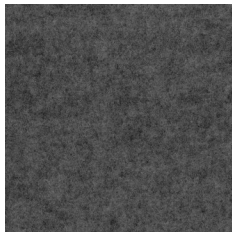


Black Grey SG

Felt



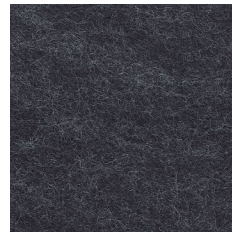
FC02
Light Grey



FC01
Grey

Felt

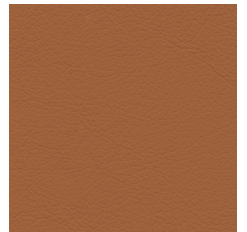
for Njord



FK01
Anthracite

Leather

for Offa handles



CL
Cognac



Cigarette
& Match



Recycled
origin

[SPECIFICATION](#)

[GO TO INDEX](#)

Metal



RAL 1024
Ochre Yellow
OY



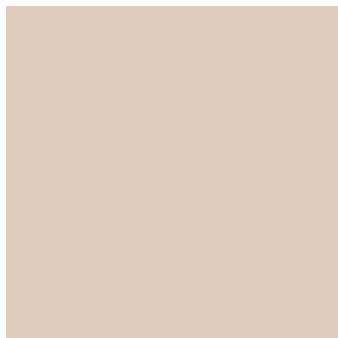
RAL 030 50 40
Vermilion Red
VR



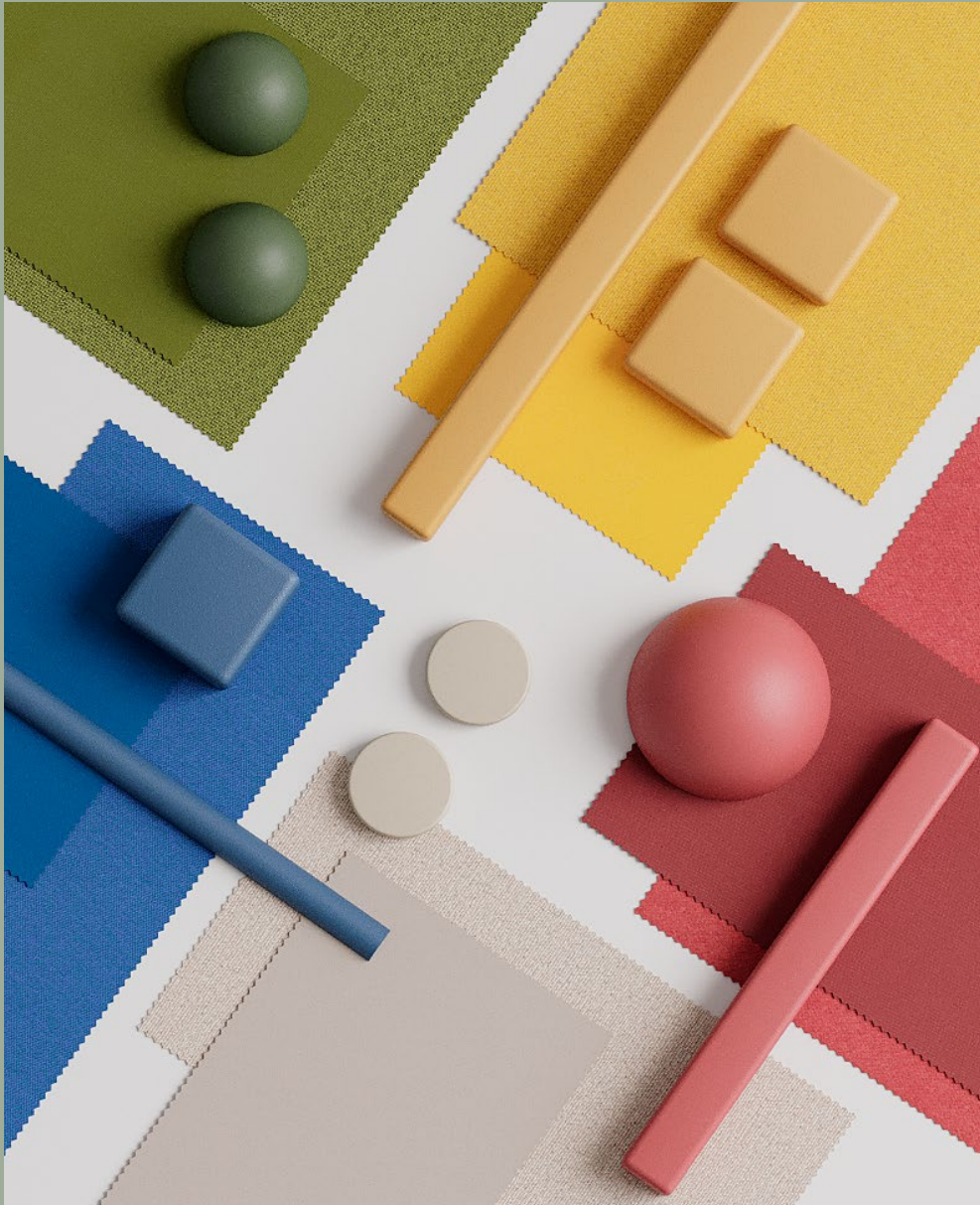
RAL 6003
Olive Green
OG



RAL 5000
Violet Blue
VB

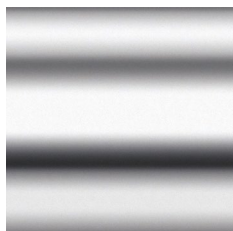


NCS S 2005-Y60R
Cashmere
NK



Metal

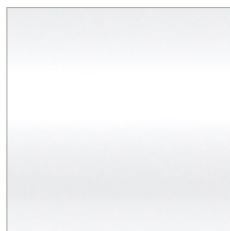
for Nowy Styl



Chrome
CR, Z



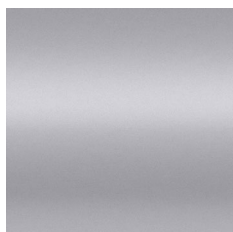
Polished Aluminium
POL



RAL 9016
Traffic White
BI, WT, W



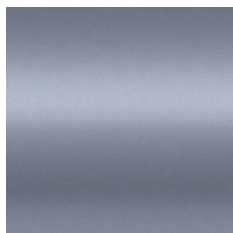
RAL 9010
Pure White
BI, WH, W



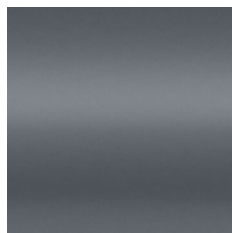
RAL 9006
White Aluminium
AL, ALU, WA, X



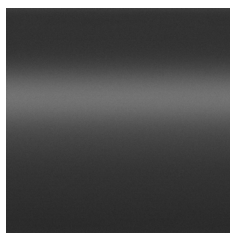
Stainless Steel
STS



RAL 7015
Slate Grey
GY



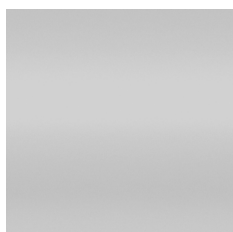
RAL 7016
Anthracite Grey
AH



RAL 9005
Jet Black
CZ, BL, Y



RAL 7021
Black Grey
GF



Natural Anode
AN



Black Matt Anode
CZ, BLN

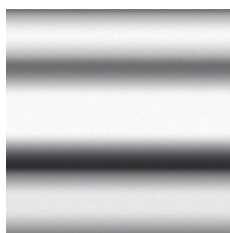


RAL 3002
Carmine Red

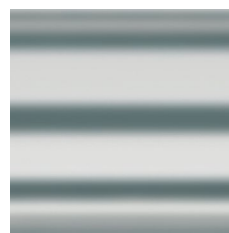


RAL 5023
Distant Blue

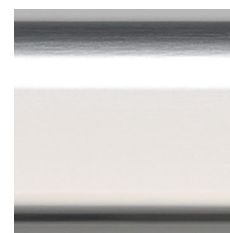
for Kusch+Co



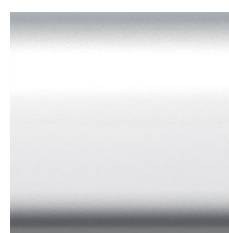
Chrome
CR



Satin Chrome
SCR



Polished Aluminium
POL



Anodised Aluminium Silver matt
ASAM



Anodised Aluminium Silver bright
ASAG



RAL 9003
Signal White
WS



RAL 9016
Traffic White
WT



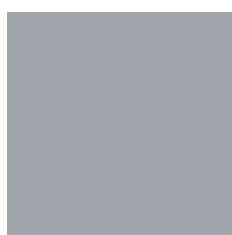
Silk
KSK



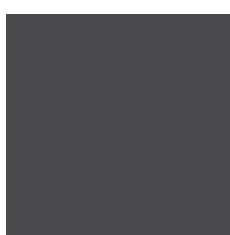
Silver 98
SV



RAL 9006
White Aluminium
WK



Silver Aluminium
SA



DB 703
Iron Mica
IM



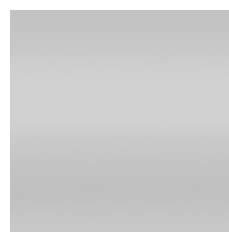
RAL 9011
Graphite Black
BLK, CZ



RAL 9005
Jet Black
BK



Stainless Steel
STS



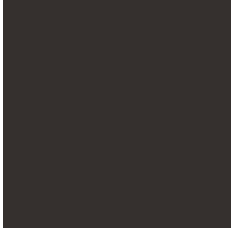
Natural Anode
AN



Black Matt Anode
AC

Plastic

for Passu



KS01

for Inta



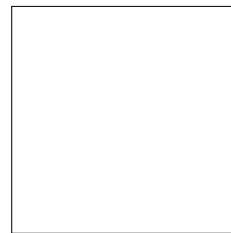
CE
Cream



PR
Powder

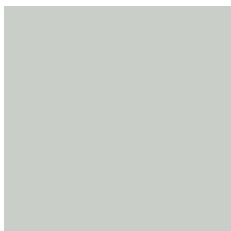


B
Black



W
White

for Amigo, Beta, Cortina, Iso, Polyfold



K-32



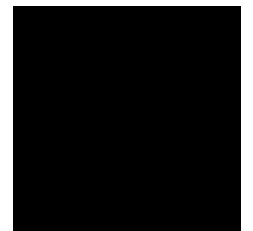
K-31



K-59



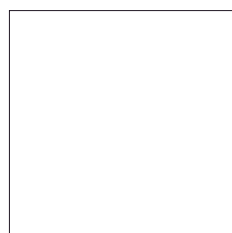
K-05



K-02

Plastic

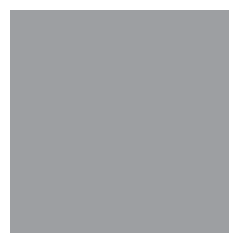
for Calado



CPP01



CPP30

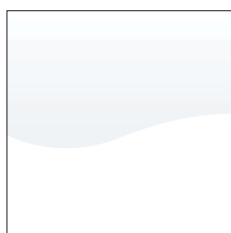


CPP32



CPP02

for Fondo



Gloss White



Gloss Red



Gloss Orange



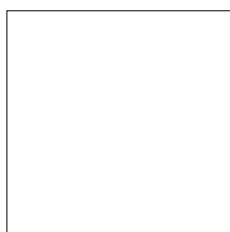
Gloss Lime Green



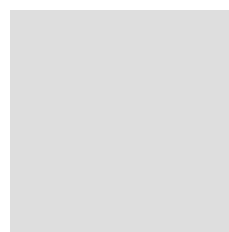
Gloss Anthracite

Plastic elements

for office chairs (e.g. backrest frames and covers, bases, armrest elements etc.)



White
W



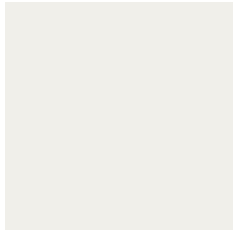
Light Grey
G



Black
B

Plastic

for iHola!



KW
Signal White



KA
Salem



KE
Pimento



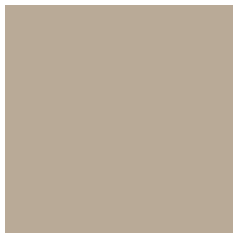
KL
Midnight Blue



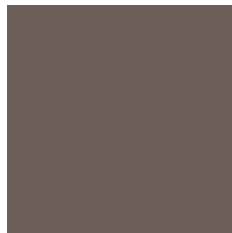
KC
Scampolo



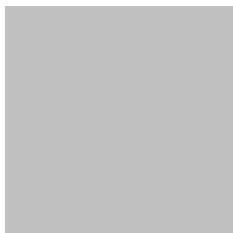
KT
Tinkerbell



KK
Silk



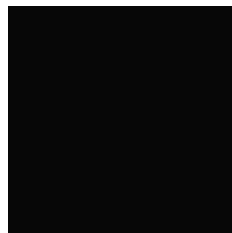
KQ
Quartz Grey



KY
Light Grey



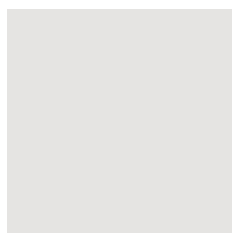
KG
Black Grey



KB
Black

Plastic

for Paxo



KWT
Traffic White



KR
Reed Green

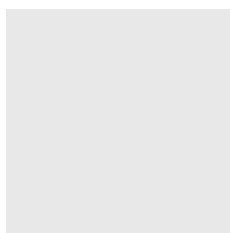


KS
Silver



KB
Black

for Volpino



KWT
Traffic White

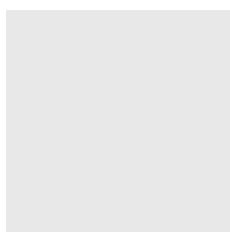


KKG
Silk Grey



KF
Graphite

for uni_verso



KI
Arctic



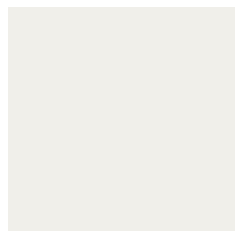
KKF
Flax Silk



KO
Stone

Plastic

for Arn



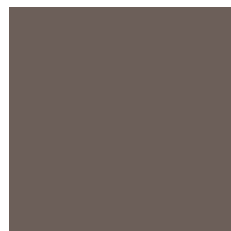
KW
Signal White



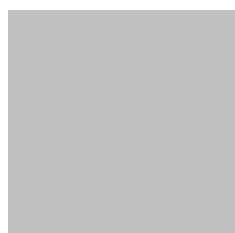
KT
Tinkerbell



KK
Silk



KQ
Quartz Grey

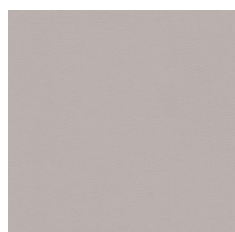


KY
Light Grey

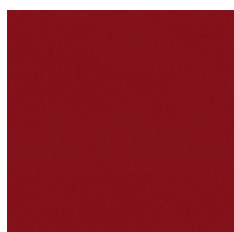


KG
Black Grey

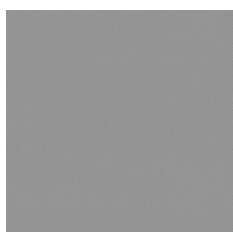
for V-Care armrests



KKB
Blush Silk



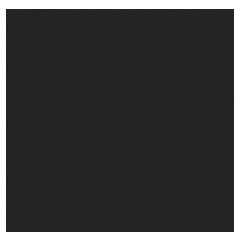
PE
Purple Red



PY
Platinum Grey



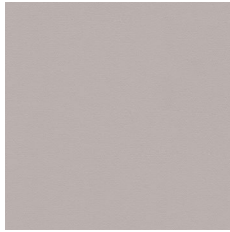
KB
Black



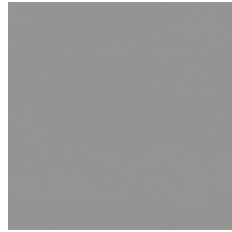
KG
Black Grey

Polyurethane

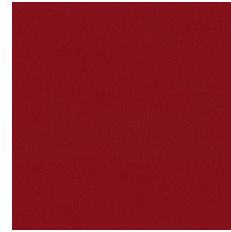
for V-Care seat shell



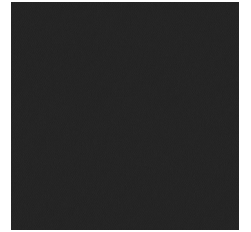
KKB
Blush Silk



PY
Platinum Grey

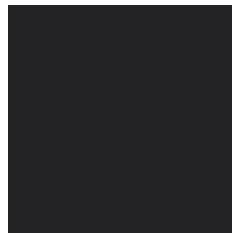


PE
Purple Red



KG
Black Grey

for Terminal



KB
Black

for 8000

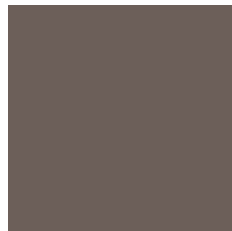


KB
Black

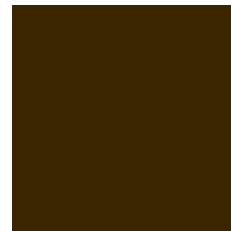
for V-Travel



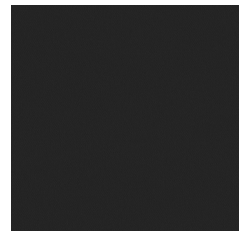
KZ
Grey Blue



KQ
Quartz Grey



KX
Grey Brown



KG
Black Grey

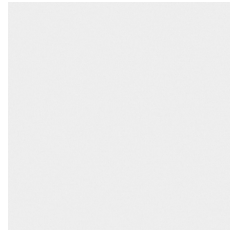
Laminate for chairs



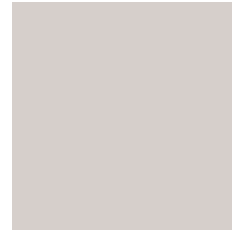
H3349
Kaisersberg Oak



H1733
Mainau Birch



W1000
Premium White



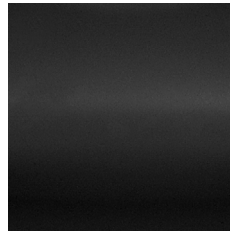
U708
Light Grey



U626
Kiwi Green



U504
Tyrolean Blue



U999
Black



U963
Dark Grey

EN for chairs, armrest pads and writing tablets
PL do krzeseł, nakładek podłokietników i pulpitów
DE für Stühle, Armauflagen und Schreibtislar
FR pour sièges, accoudoirs et tablettes

Veneer for chairs

for Nowy Styl



2.D07
Oak

for Kusch+Co



SKNO
Natural Oak

Wood (natural stained)



2.09S
White



2.0CB
Acacia



SK40
Oak



2.0CC
Walnut



S39
Light Grey

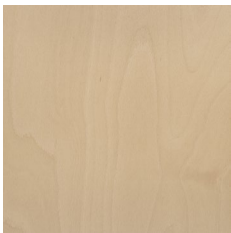


2.06S
Slate

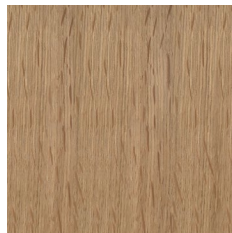


2.07Y
Black

Wood (natural lacquered) for Nowy Styl

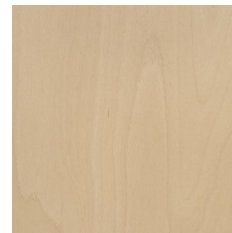


1.007 Beech OC



2.D07 Oak OA

Wood (natural lacquered) for Kusch+Co

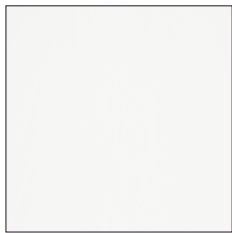


SKNB
Natural Beech

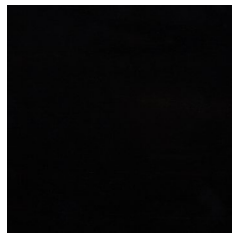


SKNO
Natural Oak

Enamels



**3.093 White Beech,
3.0A8 White**



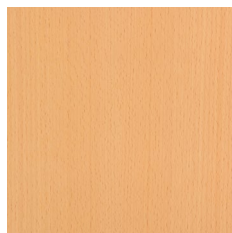
**3.097 Black Beech,
3.097 Black**

Veneer for furniture

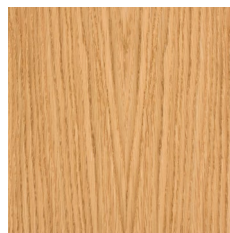
for Nowy Styl



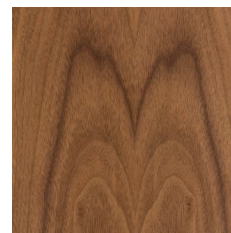
VN White Ash



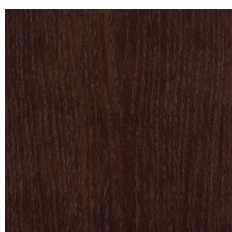
VT Natural Beech



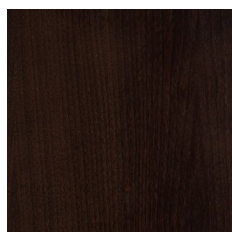
DM Natural Oak



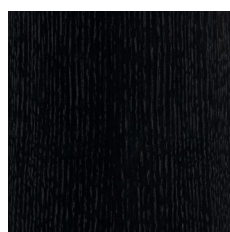
**VS Natural
American Walnut**



VM Brown Oak



**VP Brown
American Walnut**



VO Black Oak

Veneer for furniture

for Kusch+Co



KBU
Beech

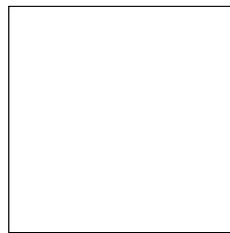


KEI
Oak

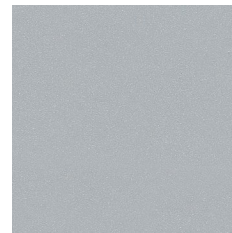


KNB
Walnut

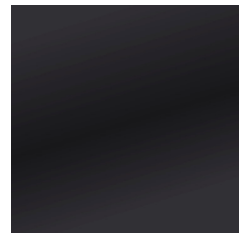
Lacquered MDF



RAL 9003
Signal White
FI



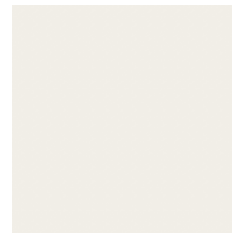
RAL 7012
Basalt Grey
FS



RAL 7021
Black Grey
FG



RAL 6018
Yellow Green



RAL 9016
Traffic White



RAL 7015
Slate Grey

Melamine | Laminate



NJ Acacia Light
GN Acacia Light¹



NZ Natural Hickory
HZ Natural Hickory¹



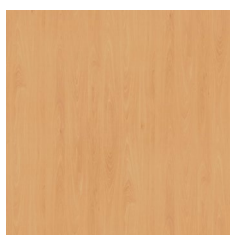
HO Hamilton Oak
KU Hamilton Oak¹



**ML Kaisersberg
Oak**



NH Maple



MM Ellmau Beech



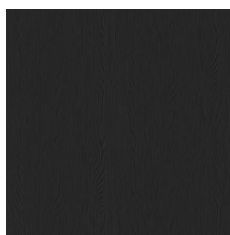
**MG Grey Vicenza
Oak**



**NW Natural Dijon
Walnut**



LW Lincoln Walnut
KT Lincoln Walnut¹



**CW Black
Graphite**

EN for furniture, soft seating elements, table tops and writing tablets
PL do mebli, elementów soft seating, blatów i pulpitów
DE für Möbel, Elemente der Soft Seating Lösungen, Tischplatten und Schreibtäbular
FR pour mobilier, éléments de canapés, plateaux de tables et tablettes écrites

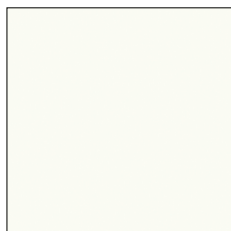
EN melamine faced chipboard (MFC), class E1
PL płyta meblowa dwustronnie melaminowana, klasa E1
DE Beidseitig melaminbeschichtete Spanplatte der Güteklasse E1
FR panneau de particules mélaminé double face, de la classe E1

EN selected colours of melamine available for selected furniture lines and their elements; details in price lists
PL wybrane kolory melamin dostępne dla wybranych linii meblowych i ich elementów; szczegóły w cennikach
DE ausgewählte Melaminfarben sind für bestimmte Möbellinien und dazugehörige Elemente verfügbar; Details in den Preislisten
FR coloris de mélamine sélectionnés, disponibles pour certains systèmes de mobilier et leurs éléments; pour plus d'informations, veuillez vous reporter aux tarifs publics

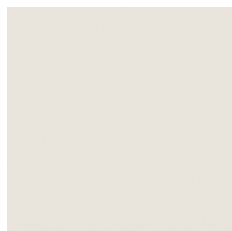
EN ¹ laminate colour matching melamine colour
PL ¹ kolor laminatu odpowiada kolorowi melaminy
DE ¹ die Melaminoberflächen sind identisch mit genannten Laminatoberflächen
FR ¹ coloris de finitions en stratifié correspondant aux coloris de mélamines



Melamine | Laminate



BI White
CA White¹



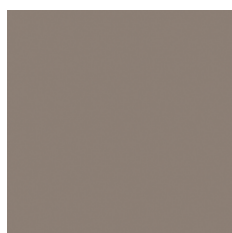
MB White Grey
FN White Grey¹



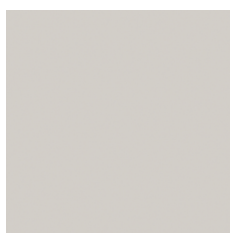
ST Smoke Blue



NK Cashmere



BA Truffle Grey



MP Platinum
BW Platinum¹



MS Slate
GW Slate¹



CC Black
DD Black¹

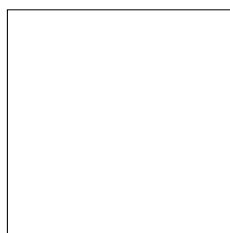
EN for furniture, soft seating elements, table tops and writing tablets
PL do mebli, elementów soft seating, blatów i pulpitów
DE für Möbel, Elemente der Soft Seating Lösungen, Tischplatten und Schreibtäbelle
FR pour mobilier, éléments de canapés, plateaux de tables et tablettes écritaires

EN melamine faced chipboard (MFC), class E1
PL płyta meblowa dwustronnie melaminowana, klasa E1
DE Beidseitig melaminbeschichtete Spanplatte der Güteklasse E1
FR panneau de particules mélaminé double face, de la classe E1

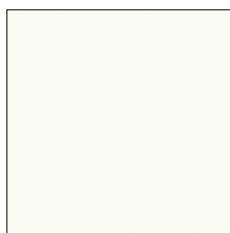
EN selected colours of melamine available for selected furniture lines and their elements; details in price lists
PL wybrane kolory melamin dostępne dla wybranych linii meblowych i ich elementów; szczegóły w cennikach
DE ausgewählte Melaminfarben sind für bestimmte Möbellinien und dazugehörige Elemente verfügbar; Details in den Preislisten
FR coloris de mélamine sélectionnés, disponibles pour certains systèmes de mobilier et leurs éléments; pour plus d'informations, veuillez vous reporter aux tarifs publics

EN ¹ laminate colour matching melamine colour
PL ¹ kolor laminatu odpowiada kolorowi melaminy
DE ¹ die Melaminoberflächen sind identisch mit genannten Laminatoberflächen
FR ¹ coloris de finitions en stratifié correspondant aux coloris de mélamines

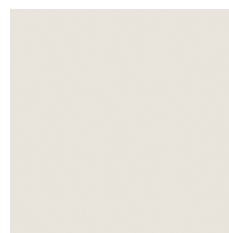
Laminate | Melamine for furniture



FU White Gloss
(whiteboard)²



CA White
BI White¹



FN White Grey
MB White Grey¹



BW Platinum
MP Platinum¹



GN Acacia Light
NJ Acacia Light¹



HZ Natural Hickory
NZ Natural Hickory¹



KU Hamilton Oak
HO Hamilton Oak¹



KT Lincoln Walnut
LW Lincoln Walnut¹



DD Black
CC Black¹



GW Slate
MS Slate¹

EN applies to selected elements of furniture systems, details in price lists
PL dotyczy wybranych elementów systemów meblowych, szczegóły w cennikach
DE für ausgewählte Elemente und Möbelsysteme erhältlich; Details in den Preislisten
FR concerne les éléments sélectionnés de mobilier; pour plus d'informations, veuillez vous reporter aux tarifs publics

EN ¹ laminate colour matching melamine colour
PL ¹ kolor laminatu odpowiada kolorowi melaminy
DE ¹ die Melaminoberflächen sind identisch mit genannten Laminatoberflächen
FR ¹ coloris de finitions en stratifié correspondant aux coloris de mélamines



environmentally
friendly



pressure
resistant

[GO TO INDEX](#)

Laminate for table tops

for Kusch+Co



GN Acacia Light
NJ Acacia Light¹



HE Kaisersberg Oak
ML Kaisersberg Oak¹



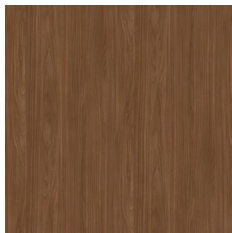
HZ Natural Hickory
NZ Natural Hickory¹



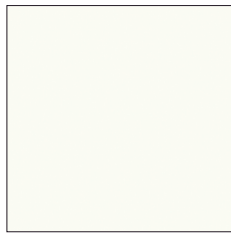
HF Ellmau Beech
MM Elmau Beech¹



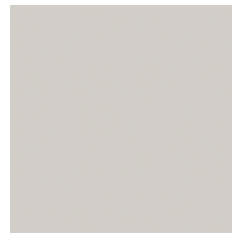
FC Grey Vicenza Oak
MG Grey Vicenza Oak¹



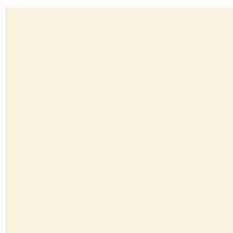
KT Lincoln Walnut
LW Lincoln Walnut¹



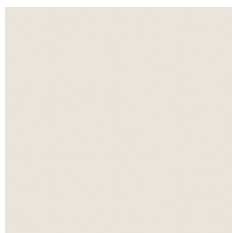
CA White
BI White¹



BW Platinum
MP Patinum¹



AA Came Beige



FN White Grey
MB White Grey¹

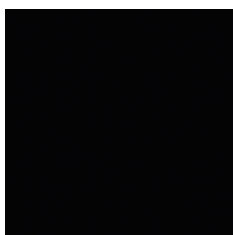


HC Cashmere
NK Cashmere¹



GW Slate
MS Slate¹

for Creva soft seating, Scorpii:



DD Black
CC Black

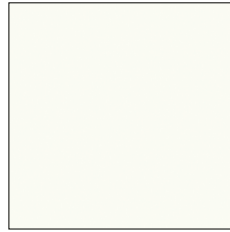
EN ¹ laminate colour matching melamine colour

PL ¹ kolor laminatu odpowiada kolorowi melaminy

DE ¹ die Melaminoberflächen sind identisch mit genannten Laminatoberflächen

FR ¹ coloris de finitions en stratifié correspondant aux coloris de mélamines

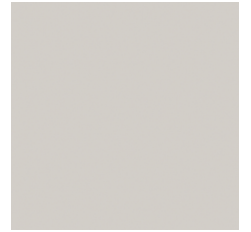
Laser edge ABS



BI White



MB White Grey



MP Platinum

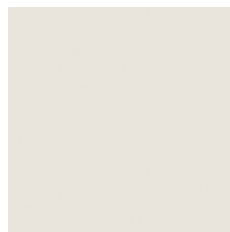


NH Maple

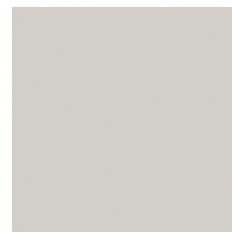


NJ Acacia Light

Glued edge 3 mm



MB White Grey



MP Platinum



**ML Kaisersberg
Oak**



NH Maple



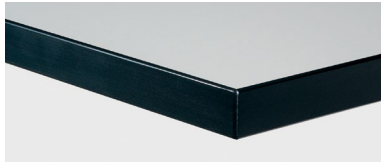
NJ Acacia Light



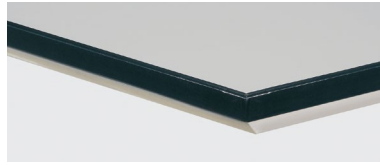
MM Ellmau Beech

Edge for table tops

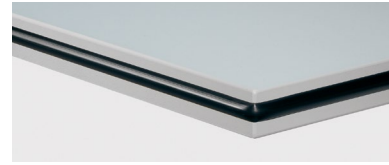
HPL Laminate for Kusch+Co



2 mm
plastic



2 mm
plastic on MDF,
50 mm chamfered lipping



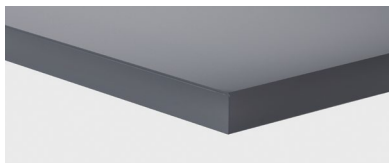
2 mm
plastic with protective edge

Melamine MFC for Kusch+Co

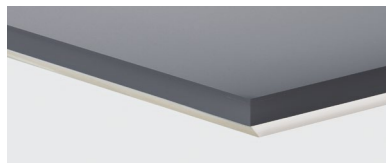


2 mm
plastic

Fenix NTM® for Kusch+Co



1 mm
plastic PP



1 mm
plastic PP on MDF,
50 mm chamfered lipping

Veneer for Kusch+Co



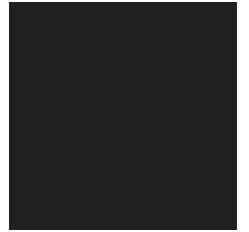
2 mm
natural wood



2 mm
natural wood on MDF,
50 mm chamfered lipping

Compact Laminate

for Kusch+Co tables in benches and writing tablets:

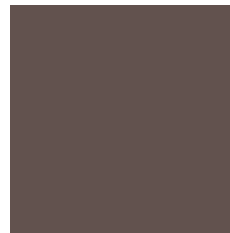


U0901TP
Traceless Black

Linoleum



JP
Pebble



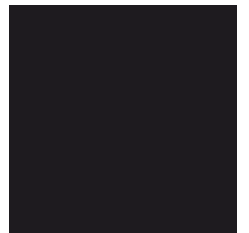
JM
Mauve



JB
Burgundy



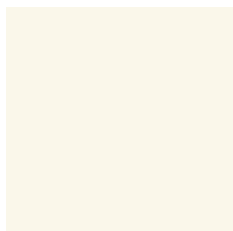
JS
Smokey Blue



JC
Charcoal

- EN** linoleum made from natural raw materials: linseed oil, resin, wood flour and natural dyes
- PL** linoleum wyprodukowane z surowców naturalnych: oleju lnianego, żywicy, mączki drzewnej i naturalnych barwników
- DE** Linoleum wird aus nachwachsenden Rohstoffen gefertigt: Leinöl, Harz, Holzmehl sowie natürliche Farbpigmente
- FR** linoléum fabriqué à partir de matières premières naturelles : huile de lin, résine, farine de bois et pigments naturels

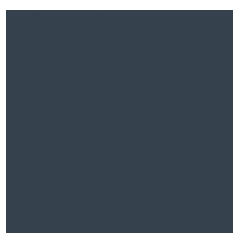
Fenix NTM®



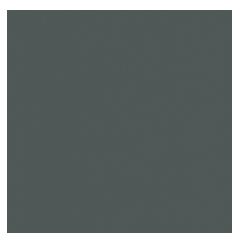
KS Bianco Kos



KP Rosso Jaipur



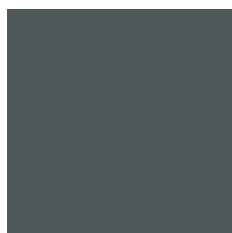
KO Blu Fes



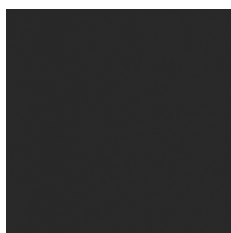
KR Verde
Comodoro



KM Grigio Antrim

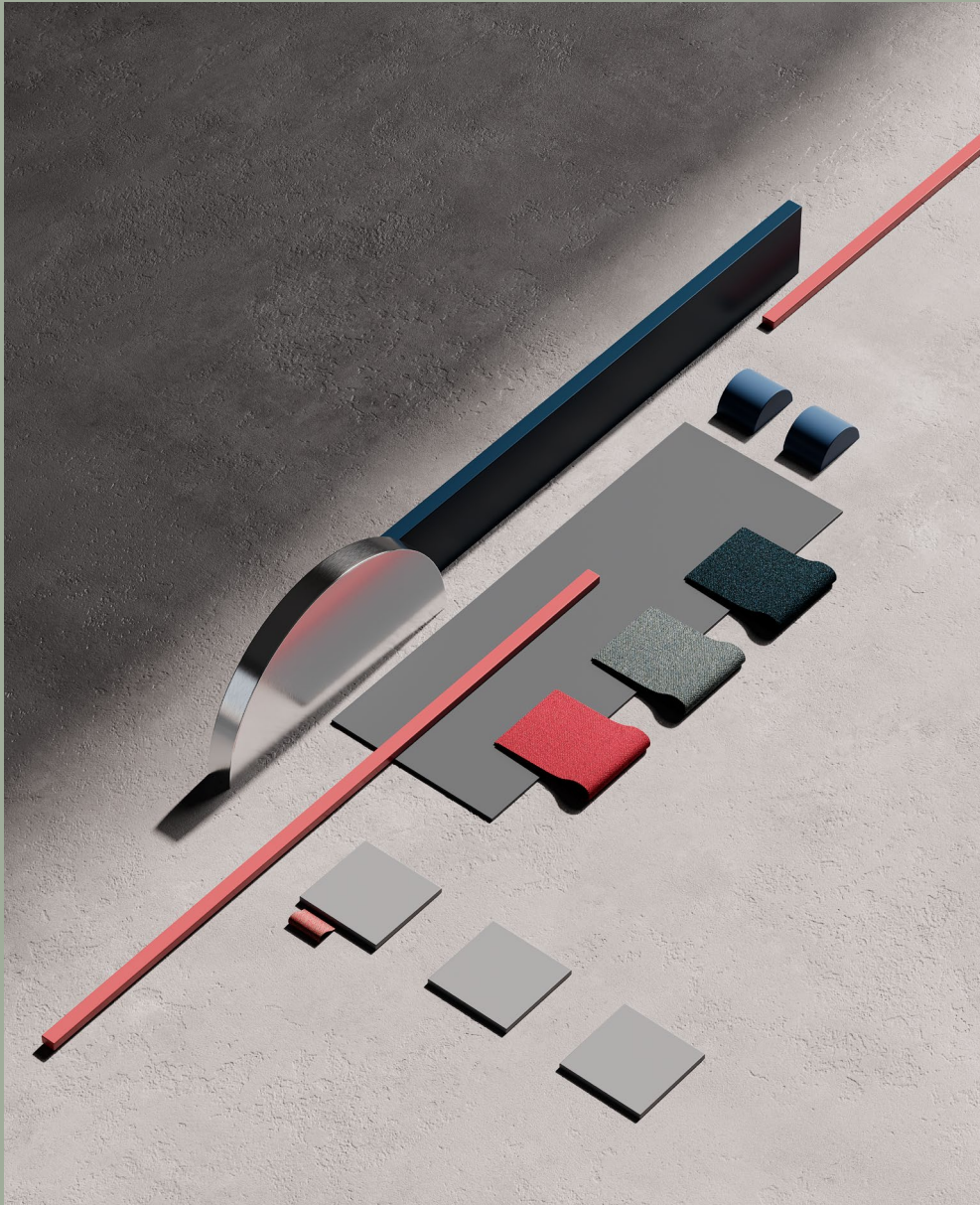


KN Grigio Bromo

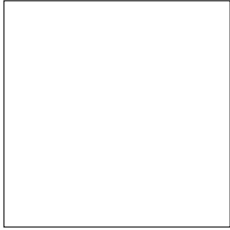


KJ Nero Ingo





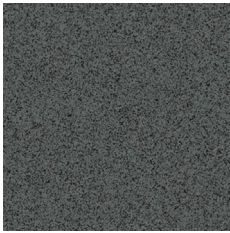
Topalit® for table tops



W.001
White



W.241
Oak Light

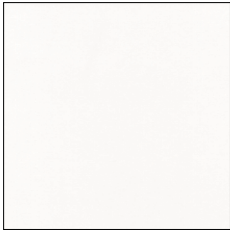


W.074
Anthracite



W.055
Black

for Trio stool



W.406
Pure White



- EN** Topalit® table tops in linear connection do not make ideally flat surface
PL stoły z blatami Topalit® w ułożeniu liniowym nie tworzą idealnie płaskiej powierzchni
DE bei der Reihenverbindung von Tischen mit Topalit®-Platte, kann keine bündige Fläche erreicht werden
FR en alignant les tables aux plateaux Topalit®, nous n'obtenons pas une surface idéalement plate

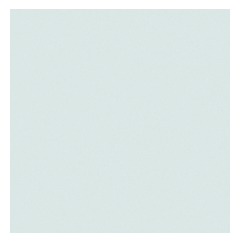


- EN** it is not allowed to store tables with Topalit® table tops one on another due to difficulties in drain of rainwater
PL stoły z blatem Topalit® nie mogą być przechowywane jeden na drugim, ponieważ uniemożliwia to swobodny odpływ wody deszczowej
DE die Topalit® Tischplatten sollen nicht aufeinander gelagert werden, da diese Lagerung Regenwasser nicht abfließen lässt
FR il est déconseillé de stocker les tables aux plateaux Topalit® l'une sur l'autre, les surfaces de plateaux en contact.
 Avec une telle configuration, l'évacuation d'eau de pluie n'est pas possible





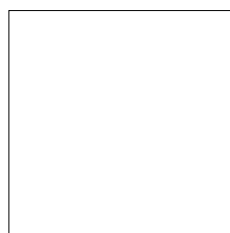
Transparent Glass



Satino Glass



Matt Glass



**RAL 9003
Signal White SI**



**RAL 7012
Basalt Grey SS**



**RAL 7021
Black Grey SG**

Technical specifications

Résistance au feu

Remarque générale :

Les propriétés ignifuges indiquées dépendent de la combinaison des matériaux utilisés dans le lot tapissé (en association avec des mousses ignifuges adaptées d'une densité appropriée, et parfois avec l'utilisation d'une isolation coupe-feu supplémentaire).

Technical specifications

	Basic Fabric C
Price group: Grupa cenowa: Preisgruppe: Groupe de prix :	0
Composition: Skład: Material: Composition :	100% polyester poliester Polyester polyester
Weight: Gramatura: Gewicht: Poids :	270 g/m ²
Abrasion resistance (<i>Martindale cycles</i>): Odporność na ścieranie (<i>cykle Martindale</i>): Scheuerfestigkeit (<i>Touren Martindale</i>): Résistance à l'abrasion (<i>cycles Martindales</i>) :	90 000
Colour fastness to light: Odporność barwy na światło: Lichtechtheit: Résistance de la couleur à la lumière :	EN ISO 105-B02 (6-7)
Colour fastness to rubbing: Odporność barwy na tarcie: Reibechtheit: Résistance de la couleur au frottement:	EN ISO 105-X12 (wet: 4-5 / dry: 4-5)
Pilling: Odporność na pilling: Pilling: Résistance au boulochage :	EN ISO 12945-2 (4-5)
Flammability: Trudnozapalność: Brandschutznormen: Résistance au feu :	-
Other: Inne: Sonstiges: Autres :	-

Technical specifications

Imitation Leather V	Micro M
	
100% PVC coated polyester poliester pokryty warstwą PCV PVC-beschichtetes Polyestergewebe polyester enduit PVC	100% polyester poliester Polyester polyester
460 g/m ²	160 g/m ²
>70 000	50 000
-	-
EN ISO 105-X12 (wet: 4-5 / dry: 4)	-
-	-
EN 1021-1, EN 1021-2, applies to colours marked with N symbol dotyczy kolorów oznaczonych symbolem N gilt für Farben mit „N“- Kennzeichnung coloris marqués N sont non-inflammables	EN 1021-1, EN 1021-2
easy to keep clean łatwy w utrzymaniu czystości einfach zu reinigen facile à nettoyer	EN 71-1 safety of toys (mechanical and physical properties) bezpieczeństwo zabawek (właściwości mechaniczne i fizyczne) Sicherheit von Spielzeug w(mechanische und physikalische Eigenschaften) sécurité des jouets (propriétés mécaniques et physiques) EN 71-2 safety of toys (flammability) bezpieczeństwo zabawek (palność) Sicherheit von Spielzeug (Entflammbarkeit) sécurité des jouets (inflammabilité) EN 71-3 safety of toys (migration of certain elements) bezpieczeństwo zabawek (migracja określonych pierwiastków) Sicherheit von Spielzeug (Migration bestimmter Elemente) sécurité des jouets (migration de certains éléments)

Technical specifications

	Bondai BN	Era CSE
Price group: Grupa cenowa: Preisgruppe: Groupe de prix :	①	①
Composition: Skład: Material: Composition :	100% polyester poliester Polyester polyester	100% polyester, non metallic dyestuffs poliester, nie zawiera pigmentów metalicznych Polyester, nicht schwermetallhaltige Farbstoffe polyester, teintures non métalliques
Weight: Gramatura: Gewicht: Poids :	250 g/m ²	320 g/m ² ±5%
Abrasion resistance (<i>Martindale cycles</i>): Odporność na ścieranie (<i>cykle Martindale</i>): Scheuerfestigkeit (<i>Touren Martindale</i>): Résistance à l'abrasion (<i>cycles Martindales</i>) :	150 000	≥100 000
Colour fastness to light: Odporność barwy na światło: Lichteinheit: Résistance de la couleur à la lumière :	EN ISO 105-B02 (6)	EN ISO 105-B02 (5)
Colour fastness to rubbing: Odporność barwy na tarcie: Reibechtheit: Résistance de la couleur au frottement:	EN ISO 105-X12 (wet: 4-5 / dry: 4-5)	-
Pilling: Odporność na pilling: Pilling: Résistance au boulochage :	EN ISO 12945-2 (5)	-
Flammability: Trudnozupalność: Brandschutznormen: Résistance au feu :	EN 1021-1, EN 1021-2, BS 5852 Crib 5, BS 7176 medium hazard Calif. Bull. 117E	EN 1021-1, EN 1021-2 BS 7176 low hazard
Other: Inne: Sonstiges: Autres :	OEKO-TEX® STANDARD 100 certificate	OEKO-TEX® STANDARD 100 certificate Indoor Advantage™ certificate (Gold) Environmental Product Declaration - Synthetic fabric composition

Technical specifications

Oflum OL	Sempre SM
	
100% polyester poliester Polyester polyester	100% polyester poliester Polyester polyester
310 g/m ²	366 +/- 15 g/m ²
162 500	≥200 000
EN ISO 105-B02 (5)	EN ISO 105-B02 (4)
EN ISO 105-X12 (wet: 4-5 / dry: 4-5)	EN ISO 105-X12 (wet: 4-5 / dry: 4-5)
EN ISO 12945-2 (4-5)	EN ISO 12945-2 (5)
EN 1021-1, EN 1021-2	EN 1021-1, EN 1021-2
EU Ecolabel certificate OEKO-TEX® STANDARD 100 certificate	EU Ecolabel certificate OEKO-TEX® STANDARD 100 certificate

Technical specifications

	Sempre Melange SMM	Oban EF
Price group: Grupa cenowa: Preisgruppe: Groupe de prix :	①	①
Composition: Skład: Material: Composition :	100% polyester poliester Polyester polyester	100% polypropylene polipropylen Polypropylen polypropylène
Weight: Gramatura: Gewicht: Poids :	375 g/m ²	230 g/m ² ±5%
Abrasion resistance (<i>Martindale cycles</i>): Odporność na ścieranie (<i>cykle Martindale</i>): Scheuerfestigkeit (<i>Touren Martindale</i>): Résistance à l'abrasion (<i>cycles Martindales</i>) :	125 000	≥30 000
Colour fastness to light: Odporność barwy na światło: Lichtechtheit: Résistance de la couleur à la lumière :	EN ISO 105-B02 (4-5)	EN ISO 105-B02 (min. 5)
Colour fastness to rubbing: Odporność barwy na tarcie: Reibechtheit: Résistance de la couleur au frottement:	EN ISO 105-X12 (wet: 4-5 / dry: 4-5)	-
Pilling: Odporność na pilling: Pilling: Résistance au boulochage :	EN ISO 12945-2 (5)	-
Flammability: Trudnozupalność: Brandschutznormen: Résistance au feu :	EN 1021-1, EN 1021-2	EN 1021-1
Other: Inne: Sonstiges: Autres :	EU Ecolabel certificate OEKO-TEX® STANDARD 100 certificate	-

Technical specifications

Lucia | YB

1

100%
recycled polyester, non metallic dyestuffs
poliester pochodzący z recyklingu, nie zawiera pigmentów metalicznych
recycltes Polyester, nicht schwermetallhaltige Farbstoffe
polyester recyclé, teintures non métalliques

260 g/m² ±5%

50 000

EN ISO 105-B02
(6)

-

-

EN 1021-1, EN 1021-2
BS 7176 low hazard

wEU Ecolabel certificate
OEKO-TEX® STANDARD 100 certificate
Indoor Advantage™ certificate (Gold)
Environmental Product Declaration - Synthetic fabric composition

[GO TO INDEX](#)

Technical specifications

	Urban YN
Price group: Grupa cenowa: Preisgruppe: Groupe de prix :	2
Composition: Skład: Material: Composition :	100% post-consumer recycled polyester, non metallic dyestuffs poliester pochodzący z recyklingu użytkowego (post-consumer), nie zawiera pigmentów metalicznych recycltes Post-Consumer-Polyester, nicht schwermetallhaltige Farbstoffe polyester recyclé post-consommation, teintures non métalliques recycltes
Weight: Gramatura: Gewicht: Poids :	340 g/m ² ±5%
Abrasion resistance (<i>Martindale cycles</i>): Odporność na ścieranie (<i>cykle Martindale</i>): Scheuerfestigkeit (<i>Touren Martindale</i>): Résistance à l'abrasion (<i>cycles Martindales</i>) :	≥100 000
Colour fastness to light: Odporność barwy na światło: Lichtechtheit: Résistance de la couleur à la lumière :	6 (ISO 105 - B02)
Colour fastness to rubbing: Odporność barwy na tarcie: Reibechtheit: Résistance de la couleur au frottement:	wet: 4, dry: 4 (ISO 105 - X12)
Pilling: Odporność na pilling: Pilling: Résistance au boulochage :	-
Flammability: Trudnozapalność: Brandschutznormen: Résistance au feu :	EN 1021-1 EN 1021-2 BS 5852 Crib 5 BS 7176 medium hazard DIN 4102 B1 NF D 60-013 AM 18 ÖNORM A 3800-1 (over CMHR 58 kg/m ³ Foam) UNI 9175 Classe 1 IM
Other: Inne: Sonstiges: Autres :	EU Ecolabel certificate OEKO-TEX® STANDARD 100 certificate

Technical specifications

Rivet EGL	Cura CUR	Hush HG	
2	2	2	
100% REPREVE® (post-consumer recycled polyester) (poliester pochodzący z recyklingu użytkowe- go - post-consumer) (recycltes Post-Consumer-Polyester) (polyester recyclé post-consommation)	100% post-consumer recycled polyester poliester pochodzący z recyklingu użytkowego (post-consumer) recycltes Post-Consumer-Polyester polyester recyclé post-consommation	80% polyester poliester Polyester polyester	20% viscose wiskoza Viskose viscose
280 g/m² ±5%	300 g/m²	170 g/m²	
≥ 80 000	100 000	-	
EN ISO 105-B02 (5-6)	EN ISO 105-B02 (5-8)	EN ISO 105-B02 (5-7)	
EN ISO 105-X12 (wet: 4 / dry: 4)	EN ISO 105-X12 (wet: 4-5 / dry: 4-5)	EN ISO 105-X12 (wet: 4-5 / dry: 4-5)	
-	EN ISO 12945-2 (4-5)	-	
EN 1021-1, EN 1021-2 BS 7176 low hazard	EN 1021-1, EN 1021-2 Calif. Bull. 117E	BS 476-7 Class 1	
EU Ecolabel certificate Indoor Advantage™ certificate (Gold) Environmental Product Declaration - Synthetic fabric composition	OEKO-TEX® STANDARD 100 certificate EU Ecolabel certificate	OEKO-TEX® STANDARD 100 certificate	

Technical specifications

	Xtreme XR
Price group: Grupa cenowa: Preisgruppe: Groupe de prix :	2
Composition: Skład: Material: Composition :	100% recycled polyester, non metallic dyestuffs poliester pochodzący z recyklingu, nie zawiera pigmentów metalicznych recyceltes Polyester, nicht schwermetallhaltige Farbstoffe polyester recyclé, teintures non métalliques
Weight: Gramatura: Gewicht: Poids :	310 g/m ² ±5%
Abrasion resistance (<i>Martindale cycles</i>): Odporność na ścieranie (<i>cykle Martindale</i>): Scheuerfestigkeit (<i>Touren Martindale</i>): Résistance à l'abrasion (<i>cycles Martindales</i>) :	≥100 000
Colour fastness to light: Odporność barwy na światło: Lichtechtheit: Résistance de la couleur à la lumière :	EN ISO 105-B02 (6)
Colour fastness to rubbing: Odporność barwy na tarcie: Reibechtheit: Résistance de la couleur au frottement:	EN ISO 105-X12 (wet: 4 / dry: 4)
Pilling: Odporność na pilling: Pilling: Résistance au boulochage :	EN ISO 12945-2 (5)
Flammability: Trudnozapalność: Brandschutznormen: Résistance au feu :	EN 1021-1, EN 1021-2 BS 5852 Crib 5, BS 7176 medium hazard, BS 476 Class 1, DIN 4102 B1, NF D 60-013
Other: Inne: Sonstiges: Autres :	EU Ecolabel certificate OEKO-TEX® STANDARD 100 certificate Indoor Advantage™ certificate (Gold) Environmental Product Declaration - Synthetic fabric composition

Technical specifications

Valencia | VL

2

upper layer:
warstwa wierzchnia:
Deckmaterial:
couche supérieure :

100%
PERMABLOK3® (vinyl / urethane)
PERMABLOK3® (winył / uretan)
PERMABLOK3® (Vinyl / Urethan)
PERMABLOK3® (vinył / uréthane)

bottom layer:
podkład:
Trägermaterial:
couche inférieure :

100%
Hi-Loft^{2TM} polyester
Hi-Loft^{2TM} poliester
Hi-Loft^{2TM} Polyester
polyester Hi-Loft^{2TM}

650 g/m²

300 000

EN ISO 105-B02
(5)

-

-

EN 1021-1, EN 1021-2
DIN 4102 B2, NF P 92-503 M2
Önorm A 3800-1 Q1, Önorm B 3825

EN 71-3

safety of toys (migration of certain elements)
bezpieczeństwo zabawek (migracja określonych pierwiastków)
Sicherheit von Spielzeug (Migration bestimmter Elemente)
sécurité des jouets (migration de certains éléments)

PERMABLOK3® ISO 18184

reduction of Coronavirus¹ presence by more
than 90% within one hour of contact
redukcja obecności Coronavirus¹ o ponad
90% w ciągu godziny od kontaktu
Reduzierung der Präsenz von Coronavirus¹ um mehr
als 90% innerhalb einer Stunde nach Kontakt
reduit la présence du Coronavirus¹ de plus
de 90% dans l'heure suivant le contact


ISO 21702

reduction of Coronavirus¹ activity by 99,9%
within 24 hours of exposure on the surface
redukcja aktywności Coronavirus¹ na powierzchni
o 99,9% w ciągu 24 godzin od momentu ekspozycji
Reduzierung der Aktivität des Coronavirus¹ um 99,9%
innerhalb von 24 Stunden nach Exposition auf der Oberfläche
reduit l'activité du Coronavirus¹ sur la surface de 99,9%
dans les 24 heures suivant l'exposition

superior antibacterial, stain resistant and antifungal protection
doskonała ochrona przed bakteriami, plamami i grzybami
hervorragender Schutz gegen Bakterien, Flecken und Pilzbefall
traitement de protection, antibactérien, antitaches et antifongique

GO TO INDEX

Technical specifications

	Runner RN	
Price group: Grupa cenowa: Preisgruppe: Groupe de prix :		
Composition: Skład: Material: Composition :	80% polyester poliester Polyester polyester	20% post-consumer recycled polyester poliester pochodzący z recyklingu użytkowego (post-consumer) recycltes Post-Consumer-Polyester polyester recyclé post-consommation
Weight: Gramatura: Gewicht: Poids :	318 g/m ²	
Abrasion resistance (<i>Martindale cycles</i>): Odporność na ścieranie (<i>cykle Martindale</i>): Scheuerfestigkeit (<i>Touren Martindale</i>): Résistance à l'abrasion (<i>cycles Martindales</i>) :	70 000	
Colour fastness to light: Odporność barwy na światło: Lichtechtheit: Résistance de la couleur à la lumière :	EN ISO 105-B02 (5-7)	
Colour fastness to rubbing: Odporność barwy na tarcie: Reibechtheit: Résistance de la couleur au frottement:	EN ISO 105-X12 (wet: 4-5 / dry: 4-5)	
Pilling: Odporność na pilling: Pilling: Résistance au boulochage :	EN ISO 12945-2 (5)	
Flammability: Trudnozupalność: Brandschutznormen: Résistance au feu :	EN 1021-1, EN 1021-2, Calif. Bull. 117E	
Other: Inne: Sonstiges: Autres :	OEKO-TEX® STANDARD 100 certificate EU Ecolabel certificate Cradle to Cradle Certified® Bronze	

Technical specifications

Silvertex | SX

3

upper layer:
warstwa wierzchnia:
Deckmaterial:
couche supérieure :

100%
PERMABLOK3® (vinyl / urethane
PERMABLOK3® (winył / uretan)
PERMABLOK3® (Vinyl / Urethan)
PERMABLOK3® (vinył / uréthane)

bottom layer:
podkład:
Trägermaterial:
couche inférieure :

100%
bottom layer: Hi-Loft²™ polyester
podkład: Hi-Loft²™ poliester
Trägermaterial: Hi-Loft²™ Polyester
couche inférieure : polyester Hi-Loft²™

685 g/m²

300 000

-

-

-

EN 1021-1, EN 1021-2
DIN 4102 B2, NF P 92-503 M2
Önorm B 3825, Önorm A 3800-1 Q1

EN 71-3

safety of toys (migration of certain elements)
bezpieczeństwo zabawek (migracja określonych pierwiastków)
Sicherheit von Spielzeug (Migration bestimmter Elemente)
sécurité des jouets (migration de certains éléments)

PERMABLOK3® ISO 18184

reduction of Coronavirus¹ presence by more than 90% within one hour of contact
redukcja obecności Coronavirus¹ o ponad 90% w ciągu godziny od kontaktu
Reduzierung der Präsenz von Coronavirus¹ um mehr als 90% innerhalb einer Stunde nach Kontakt
reduit la présence du Coronavirus¹ de plus de 90% dans l'heure suivant le contact

ISO 21702

reduction of Coronavirus¹ activity by 99,9% within 24 hours of exposure on the surface
redukcja aktywności Coronavirus¹ na powierzchni o 99,9% w ciągu 24 godzin od momentu ekspozycji
Reduzierung der Aktivität des Coronavirus¹ um 99,9% innerhalb von 24 Stunden nach Exposition auf der Oberfläche
reduit l'activité du Coronavirus¹ sur la surface de 99,9% dans les 24 heures suivant l'exposition

superior antibacterial, stain resistant and antifungal protection
doskonała ochrona przed bakteriami, plamami i grzybami
hervorragender Schutz gegen Bakterien, Flecken und Pilzbefall
traitement de protection, antibactérien, antitaches et antifongique

GO TO INDEX

Technical specifications

	Step STG Step Melange STMG	Split Leather SP
Price group: Grupa cenowa: Preisgruppe: Groupe de prix :	3	3
Composition: Skład: Material: Composition :	100% Trevira CS	100% pigmented split leather (1.1 - 1.3 mm) skóra dwoina (1,1 - 1,3 mm) Spaltleder (1,1 - 1,3 mm) croûte de cuir (1,1 - 1,3 mm)
Weight: Gramatura: Gewicht: Poids :	335 g/m ²	-
Abrasion resistance (<i>Martindale cycles</i>): Odporność na ścieranie (<i>cykle Martindale</i>): Scheuerfestigkeit (<i>Touren Martindale</i>): Résistance à l'abrasion (<i>cycles Martindales</i>) :	100 000	-
Colour fastness to light: Odporność barwy na światło: Lichtechtheit: Résistance de la couleur à la lumière :	EN ISO 105-B02 (5-7)	-
Colour fastness to rubbing: Odporność barwy na tarcie: Reibechtheit: Résistance de la couleur au frottement:	EN ISO 105-X12 (wet: 4-5 / dry: 4-5)	-
Pilling: Odporność na pilling: Pilling: Résistance au boulochage :	EN ISO 12945-2 (4-5)	-
Flammability: Trudnozupalność: Brandschutznormen: Résistance au feu :	EN 1021-1, EN 1021-2, BS 5852 Crib 5, BS 7176 medium hazard, DIN 4102 B1, NF P 92-503-5 M1, NF D 60-013 AM 18, Calif. Bull. 117E	EN 1021-1, EN 1021-2
Other: Inne: Sonstiges: Autres :	EU Ecolabel certificate OEKO-TEX® STANDARD 100 certificate	-

Technical specifications

Harlequin HQ		Rhythm RH
		
<p>77% polyester poliester Polyester polyester</p>	<p style="text-align: center;">23%</p> <p style="text-align: center;">post-consumer recycled polyester poliester pochodzący z recyklingu użytkowego (post-consumer) recycltes Post-Consumer-Polyester polyester recyclé post-consommation</p>	<p>100% polyester/polyester flame retardant 100% poliester / poliester trudnozapalny 100% Polyester / Polyester flammhemmend 100% polyester / polyester ignifugé</p>
318 g/m ²		328 g/m ²
100 000		70 000
EN ISO 105-B02 (5-7)		EN ISO 105-B02 (5-7)
EN ISO 105-X12 (wet: 4-5 / dry: 4-5)		EN ISO 105-X12 (wet: 4-5 / dry: 4-5)
EN ISO 12945-2 (5)		EN ISO 12945-2 (5)
EN 1021-1, EN 1021-2 Calif. Bull. 117E		EN 1021-1, EN 1021-2 BS 5852 Crib 5 BS 7176 Medium hazard DIN 4102 B1 NF P 92-503 M3 Calif. Bull. 117E
OEKO-TEX® STANDARD 100 certificate EU Ecolabel certificate Cradle to Cradle Certified® Bronze		OEKO-TEX® STANDARD 100 certificate

Technical specifications

	skai® Parotega	
Price group: Grupa cenowa: Preisgruppe: Groupe de prix :	4	
Composition: Skład: Material: Composition :	approx. 85% PVC-compound ok. 85% mieszanka PVC ca. 85% PVC-Compound env. 85 % mélange de PVC	approx. 15% CO-knitted fabric ok. 15% dzianina bawełniana ca. 15% BW-Gestrick env. 15 % tissu en tricot en coton
Weight: Gramatura: Gewicht: Poids :	780 g/m ² +/- 50 g/m ²	
Abrasion resistance (<i>Martindale cycles</i>): Odporność na ścieranie (<i>cykle Martindale</i>): Scheuerfestigkeit (<i>Touren Martindale</i>): Résistance à l'abrasion (<i>cycles Martindales</i>) :	300 000	
Colour fastness to light: Odporność barwy na światło: Lichtechtheit: Résistance de la couleur à la lumière :	7 (DIN EN ISO 105-B02)	
Colour fastness to rubbing: Odporność barwy na tarcie: Reibechtheit: Résistance de la couleur au frottement:	-	
Pilling: Odporność na pilling: Pilling: Résistance au boulochage :	-	
Flammability: Trudnozupalność: Brandschutznormen: Résistance au feu :	EN1021-1 EN1021-2 BS 5852 Crib 5 DIN 4102 B1 DIN 4102 B2 DIN EN 13501-1 B, s3, d0 DIN 66084 P-a NF P 92-503 M1 NF D 60-013 AM 18	
Other: Inne: Sonstiges: Autres :	-	

Technical specifications

Blazer CUZ	Blazer Lite LTH
	
<p>100% virgin wool, non metallic dyestuffs czysta wełna, nie zawiera pigmentów metalicznych Schurwolle, nicht schwermetallhaltige Farbstoffe pure laine vierge, teintures non métalliques</p>	<p>100% virgin wool, non metallic dyestuffs czysta wełna, nie zawiera pigmentów metalicznych Schurwolle, nicht schwermetallhaltige Farbstoffe pure laine vierge, teintures non métalliques</p>
460 g/m ² ±5%	355 g/m ² ±5%
≥45 000	-
EN ISO 105-B02 (4-6)	EN ISO 105-B02 (5)
-	-
-	-
<p>EN 1021-1, EN 1021-2 BS 7176 low hazard BS 476 Class 1, NF D 60-013 AM 18</p>	<p>EN 13501-1 (class C, s1, d0) BS 476 Class 1</p>
<p>EU Ecolabel certificate Indoor Advantage™ certificate (Gold) Environmental Product Declaration - Natural fabric composition</p>	<p>EU Ecolabel certificate Indoor Advantage™ certificate (Gold) Environmental Product Declaration - Natural fabric composition</p>

Technical specifications

	Synergy LDS	
Price group: Grupa cenowa: Preisgruppe: Groupe de prix :	4	
Composition: Skład: Material: Composition :	95% virgin wool czysta wełna Schurwolle pure laine vierge	5% polyamide poliamid Polyamid polyamide
Weight: Gramatura: Gewicht: Poids :	400 g/m ² ±5%	
Abrasion resistance (<i>Martindale cycles</i>): Odporność na ścieranie (<i>cykle Martindale</i>): Scheuerfestigkeit (<i>Touren Martindale</i>): Résistance à l'abrasion (<i>cycles Martindales</i>) :	≥100 000	
Colour fastness to light: Odporność barwy na światło: Lichtechtheit: Résistance de la couleur à la lumière :	EN ISO 105-B02 (5)	
Colour fastness to rubbing: Odporność barwy na tarcie: Reibechtheit: Résistance de la couleur au frottement:	EN ISO 105-X12 (wet: 4 / dry: 4)	
Pilling: Odporność na pilling: Pilling: Résistance au boulochage :	EN ISO 12945-2 (4)	
Flammability: Trudnozapalność: Brandschutznormen: Résistance au feu :	EN 1021-1, EN 1021-2 BS 7176 low hazard, NF D 60-013 AM 18 ÖNORM B 3825 & A 3800-1 (58 kg/m ³ CMHR Foam)	
Other: Inne: Sonstiges: Autres :	EU Ecolabel certificate Indoor Advantage™ certificate (Gold) Environmental Product Declaration - Natural fabric composition	

Technical specifications

Main Line Flax | MLF

4

75%
virgin wool
czysta wełna
Schurwolle
pure laine vierge

25%
flax
len
Flachs
lin

437 g/m² ±5%

≥50 000

EN ISO 105 - B02
(4-5)

-

-

EN 1021-1, EN 1021-2,
BS 7176 medium hazard
ÖNORM B 3825 & A 3800-1 (58kg/m³ CMHR Foam)
UNI 9175 Classe 1 IM
BS 5852 Crib 5
NF D 60-013 AM 18

EU Ecolabel certificate
Indoor Advantage™ certificate (Gold)
Environmental Product Declaration - Natural fabric composition

GO TO INDEX

Technical specifications

	24/7 Flax FYR		
Price group: Grupa cenowa: Preisgruppe: Groupe de prix :	4		
Composition: Skład: Material: Composition :	54% polyamide poliamid Polyamid polyamide	35% wool wełna Wolle laine	11% flax len Flachs lin
Weight: Gramatura: Gewicht: Poids :	390 g/m ² ±5%		
Abrasion resistance (<i>Martindale cycles</i>): Odporność na ścieranie (<i>cykle Martindale</i>): Scheuerfestigkeit (<i>Touren Martindale</i>): Résistance à l'abrasion (<i>cycles Martindales</i>) :	≥200 000		
Colour fastness to light: Odporność barwy na światło: Lichtechtheit: Résistance de la couleur à la lumière :	EN ISO 105-B02 (5)		
Colour fastness to rubbing: Odporność barwy na tarcie: Reibechtheit: Résistance de la couleur au frottement:	-		
Pilling: Odporność na pilling: Pilling: Résistance au boulochage :	-		
Flammability: Trudnozupalność: Brandschutznormen: Résistance au feu :	EN 1021-1, EN 1021-2 BS 5852 Crib 5, BS 7176 medium hazard NF D 60 - 013 AM 18 UNI 9175 / Classe 1 (IM)		
Other: Inne: Sonstiges: Autres :	Indoor Advantage™ certificate (Gold)		

Technical specifications

Hi-Tech | AS

4

60%
polypropylene
polipropylen
Polypropylen
polypropylène

29%
wool
wełna
Wolle
laine

10%
viscose
wiskoza
Viskose
viscose

1%
carbon fibre
włókno węglowe
Carbon Faser
fibre de carbone

385 g/m² ±5%

≥60 000

EN ISO 105-B02
(5)

-

-

EN 1021-1, EN 1021-2
BS 7176 Low Hazard

The fabric with unique anti-static properties. It has been specifically designed to dissipate any build up of static electricity so there are no nasty shocks.

Tkanina o wyjątkowych właściwościach antystatycznych. Została zaprojektowana tak, aby rozpraszać nagromadzone ładunki elektrostatyczne i unikać nieprzyjemnych dla człowieka wyładowań.

Hi-Tech ist ein besonders leistungsstarker Polsterstoff mit einzigartigen antistatischen Eigenschaften. Er wurde speziell entwickelt, um den Aufbau statischer Aufladung vom Möbelstück zur Erde abzuleiten, so dass es keine unangenehmen Schläge gibt.

Tissu ayant des propriétés antistatiques exceptionnelles. Grâce à sa structure, il disperse des charges électrostatiques qui s'accumulent, et il évite ainsi des petites décharges désagréables.

[GO TO INDEX](#)

Technical specifications

	Fine Leather SD, LE
Price group: Grupa cenowa: Preisgruppe: Groupe de prix :	5
Composition: Skład: Material: Composition :	100% pigmented soft grain leather (0.9 - 1.1mm), dyed through miękką skórą licową (0,9 - 1,1mm), barwiona weiches Oberleder (0,9 - 1,1mm), durchgefärbt cuir pleine fleur corrigé (épaisseur 0,9 - 1,1mm), entièrement teinté
Weight: Gramatura: Gewicht: Poids :	-
Abrasion resistance (<i>Martindale cycles</i>): Odporność na ścieranie (<i>cykle Martindale</i>): Scheuerfestigkeit (<i>Touren Martindale</i>): Résistance à l'abrasion (<i>cycles Martindales</i>) :	-
Colour fastness to light: Odporność barwy na światło: Lichtechtheit: Résistance de la couleur à la lumière :	-
Colour fastness to rubbing: Odporność barwy na tarcie: Reibechtheit: Résistance de la couleur au frottement:	-
Pilling: Odporność na pilling: Pilling: Résistance au boulochage :	-
Flammability: Trudnozapalność: Brandschutznormen: Résistance au feu :	EN 1021-1, EN 1021-2
Other: Inne: Sonstiges: Autres :	-

Technical specifications

Remix 3 | RX

5

90%
new wool
czysta żywa wełna
Schurwolle
pure laine vierge

10%
nylon
nylon
Nylon
nylon

300 g/m²

100 000

EN ISO 105-B02
(6)

EN ISO 105-X12
(wet: 4 / dry: 4-5)

EN ISO 12945-2
(4)

EN 1021-1, EN 1021-2
NF D 60-013 AM 18
Önorm A 3800-1 (Q1),
Önorm B 3825 (B1)
Calif. Bull. 117E

EU Ecolabel
certificate
Greenguard
certificate (Gold)
Environmental
Product Declaration (EPD)

[GO TO INDEX](#)

Technical specifications

	Nappa Leather NAP
Price group: Grupa cenowa: Preisgruppe: Groupe de prix :	6
Composition: Skład: Material: Composition :	100% leather (1.0-1.2 mm) skóra (1,0-1,2 mm) Leder (1,0-1,2 mm) cuir (1,0-1,2 mm)
Weight: Gramatura: Gewicht: Poids :	-
Abrasion resistance (<i>Martindale cycles</i>): Odporność na ścieranie (<i>cykle Martindale</i>): Scheuerfestigkeit (<i>Touren Martindale</i>): Résistance à l'abrasion (<i>cycles Martindales</i>)	-
Colour fastness to light: Odporność barwy na światło: Lichtechtheit: Résistance de la couleur à la lumière :	EN ISO 105 - B02 (≥ 5)
Colour fastness to rubbing: Odporność barwy na tarcie: Reibechtheit: Résistance de la couleur au frottement:	-
Pilling: Odporność na pilling: Pilling: Résistance au boulochage :	-
Flammability: Trudnozapalność: Brandschutznormen: Résistance au feu :	EN 1021-1, EN 1021-2
Other: Inne: Sonstiges: Autres :	<p>Raw material: hides of Central European breeds. Environmentally friendly mineral tanning.</p> <p>Surowiec: skóry ras środkowoeuropejskich. Przyjazne dla środowiska garbowanie mineralne.</p> <p>Rohstoff: Häute mitteleuropäischer Rassen. Umweltfreundliche mineralische Gerbung.</p> <p>Matière première : peaux de races d'Europe centrale. Tannage minéral respectueux de l'environnement.</p>

Technical specifications

Arona Leather AN	Grain Leather GR
<div style="border: 1px solid black; border-radius: 50%; width: 40px; height: 40px; display: flex; align-items: center; justify-content: center; margin: 0 auto;">6</div>	<div style="border: 1px solid black; border-radius: 50%; width: 40px; height: 40px; display: flex; align-items: center; justify-content: center; margin: 0 auto;">7</div>
<p>Leather with high-quality mineral tanning, non-solvent PU-finishing (1.0-1.3 mm)</p> <p>Skóra z wysokiej jakości garbowaniem mineralnym, bezrozpuszczalnikowe wykończenie PU (1,0-1,3 mm)</p> <p>Leder mit hochwertiger Mineralgerbung, lösungsmittelfreie PU-Ausrüstung (1,0-1,3 mm)</p> <p>Cuir avec tannage minéral de haute qualité, finition PU sans solvant (1,0-1,3 mm)</p>	<p>Semi-aniline leather with high performance properties (1.1-1.3 mm)</p> <p>Skóra semianilinowa o wysokich właściwościach użytkowych (1,1-1,3 mm)</p> <p>Semianilinleder mit hohen Gebrauchseigenschaften (1,1-1,3 mm)</p> <p>Cuir semi-aniline aux propriétés d'utilisation élevées (1,1-1,3 mm)</p>
-	-
-	-
(EN ISO 105 - B02 (≥ 5))	EN ISO 105 - B02 (≥ 5)
EN ISO 11640 (wet: ≥ 4/dry: ≥ 4)	-
-	-
EN 1021-1, EN 1021-2	EN 1021-1, EN 1021-2 BS 5852 Crib 5
<p>Raw material: South-German and Austrian cattle hides Surowiec: skóry bydłace z południowych Niemiec i Austrii Rohstoff: Rindshäute aus Süddeutschland und Österreich Matière première : peaux de bovins du sud de l'Allemagne et d'Autriche</p>	-

Technical specifications

	Mesh AX for Xilium	Mesh WX for Xilium		Mesh MF for Navigo
Composition: Skład: Material: Composition :	100% polyester poliester Polyester polyester	33% polyelastomer polielastomer Polyelastomer polyelastomer	67% PA66	100% polyester poliester Polyester polyester
Weight: Gramatura: Gewicht: Poids :	570 g/m ² +/- 5%	361 g/m ²		360 +/- 5% g/m ²
Abrasion resistance (<i>Martindale cycles</i>): Odporność na ścieranie (<i>cykle Martindale</i>): Scheuerfestigkeit (<i>Touren Martindale</i>): Résistance à l'abrasion (<i>cycles Martindales</i>) :	≥45 000	≥100 000		100 000
Colour fastness to light: Odporność barwy na światło: Lichtechtheit: Résistance de la couleur à la lumière :	EN ISO 105-B02 (>6)	EN ISO 105-B02 (4)		EN ISO 105-B02 (6)
Colour fastness to rubbing: Odporność barwy na tarcie: Reibechtheit: Résistance de la couleur au frottement:	EN ISO 105-X12 (wet: 5/ dry: 4-5)	EN ISO 105-X12 (wet: 4-5/ dry: 4-5)		EN ISO 105-X12 (wet: 4-5/ dry: 4-5)
Pilling: Odporność na pilling: Pilling: Résistance au boulochage :	EN ISO 12945-2 (5)	EN ISO 12945-2 (4-5)		EN ISO 12945-2 (5)
Flammability: Trudnozupalność: Brandschutznormen: Résistance au feu :	EN 1021-1, EN 1021-2	EN 1021-1, EN 1021-2		EN 1021-1, EN 1021-2
Other: Inne: Sonstiges: Autres :	EU Ecolabel certificate	OEKO-TEX® STANDARD 100 certificate		OEKO-TEX® STANDARD 100 certificate

Technical specifications

Mesh OP	Mesh MX for Xenium		Mesh KR.4921		Mesh MT
100% polyester polyester Polyester polyester	25% polyamide poliamid Polyamid polyamide	75% polyester polyester Polyester polyester	34% polyamide poliamid Polyamid polyamide	66% polyester polyester Polyester polyester	100% post-consumer recycled polyester poliester pochodzący z recyklingu pożytkowego (post-consumer) recycltes Post-Consumer-Polyester polyester recyclé post-consommation
270 +/- 5% g/m ²	350 g/m ²		240 g/m ²		260 g/m ²
50 000	40 000		200 000		100 000
-	-		EN ISO 105-B02 (5)		EN ISO 105-B02 (6-8)
-	EN ISO 105-X12 (wet: 4-5/ dry: 4-5)		EN ISO 105-X12 (wet: 4-5/ dry: 4-5)		EN ISO 105-X12 (wet: 4-5/dry: 4-5)
-	-		EN ISO 12945-2 (5)		EN ISO 12945-2 (5)
EN 1021-1, EN 1021-2 (OP24N only)	EN 1021-1		EN 1021-1		EN 1021-1, EN 1021-2 Calif. Bull. 117E
-	-		-		EU Ecolabel certificate OEKO-TEX® STANDARD 100 certificate

Technical specifications

	Mesh NTS for Sail		Mesh MV
Composition: Skład: Material: Composition :	99% polyester poliester Polyester polyester	1% elastane elastan Elasthan élasthane	80% post-consumer recycled polyester poliester pochodzący z recyklingu użytkowego (post-consumer) recyceltes Post-Consumer -Polyester polyester recyclé post-consommation 20% elastomeric polymer polimer elastomerowy elastomeres Polymer polymère élastomère
Weight: Gramatura: Gewicht: Poids :	175 g/m ²		230 g/m ²
Abrasion resistance (<i>Martindale cycles</i>): Odporność na ścieranie (<i>cykle Martindale</i>): Scheuerfestigkeit (<i>Touren Martindale</i>): Résistance à l'abrasion (<i>cycles Martindales</i>) :	30 000		100 000
Colour fastness to light: Odporność barwy na światło: Lichtechtheit: Résistance de la couleur à la lumière :	EN ISO 105-B02 (6)		EN ISO 105-B02 (6-8)
Colour fastness to rubbing: Odporność barwy na tarcie: Reibechtheit: Résistance de la couleur au frottement:	EN ISO 105-X12 (wet: 4-5/ dry: 4-5)		EN ISO 105-X12 (wet: 4-5/ dry: 4-5)
Pilling: Odporność na pilling: Pilling: Résistance au boulochage :	EN ISO 12945-2 (5)		EN ISO 12945-2 (5)
Flammability: Trudnozupalność: Brandschutznormen: Résistance au feu :	EN 1021-1		EN 1021-1, EN 1021-2, Calif. Bull. 117E
Other: Inne: Sonstiges: Autres :	-		OEKO-TEX® STANDARD 100 certificate Cradle to Cradle Certified® Bronze

Technical specifications

Mesh PX02 for @-Motion/ Net Motion	Mesh PX01		Elasto-net for YouTEAM™	Felt for Formo wall panels, Tepee panels	Felt for Formo curtain
100% polyester poliester Polyester polyester	77% PVC	23% PES	TPU thermoplastic polyurethane elastomer termoplastyczny elastomer poliuretanowy thermoplastisches Polyurethanelastomer élastomère de polyuréthane thermoplastique	100% polyester fiber włókno poliestrowe Polyesterfasern fibre de polyester	100% polyester fiber włókno poliestrowe Polyesterfasern fibre de polyester
350 g/m ²	560 g/m ²		1,21kg/dm ³ * *density *gęstość *dichte *densité	1000 g/m ² for thickness 7.5 mm dla grubości 7,5 mm bei einer Stärke von 7,5 mm pour une épaisseur de 7,5 mm	650 g/m ² for thickness 7.5 mm dla grubości 7,5 mm bei einer Stärke von 7,5 mm pour une épaisseur de 7,5 mm
10 000	100 000		-	-	-
-	EN ISO 105-B02 (5)		-	-	-
M0401-3669	EN ISO 105-X12		-	-	-
-	-		-	-	-
EN 1021-1	-		-	EN 1021-1, EN 1021-2	-
-	-		-	-	-

Legend

Fabrics



cigarette & match

- EN** the certificate confirming the standards EN 1021-1 and EN 1021-2
- PL** certyfikat potwierdzający spełnianie norm EN 1021-1 i EN 1021-2
- DE** Zertifikat zur Erfüllung der Normen EN 1021-1 und EN 1021-2
- FR** le certificat attestant la conformité aux normes EN 1021-1 et EN 1021-2



high abrasion resistance

- EN** the fabric with confirmed min. 100 000 Martindale cycles
- PL** tapicerka o potwierdzonej ilości cykli Martindale'a min. 100 000
- DE** Material mit nachweislich min. 100.000 Touren nach Martindale
- FR** le revêtement avec au moins 100 000 cycles Martindales confirmés



high flame resistance

- EN** the certificate confirming the standards like DIN 4102-1 B1, BS 5852 Crib 5
- PL** certyfikat potwierdzający spełnianie norm takich jak DIN 4102-1 B1, BS 5852 Crib 5
- DE** Zertifikat zur Erfüllung von Normen wie DIN 4102-1 B1, BS 5852 Crib 5
- FR** le certificat attestant la conformité aux normes telles que : DIN 4102-1 B1, BS 5852 Crib 5



heavy duty

- EN** the fabric with confirmed min. 200 000 Martindale cycles (extensive usage during 24/7work, according to BS 5459-2 norm)
- PL** tapicerka o potwierdzonej ilości cykli Martindale'a min. 200 000 (wzmoczone użytkowanie w trybie pracy 24/7, wg normy BS 5459-2)
- DE** Material mit nachweislich min. 200.000 Touren nach Martindale (extensive Nutzung während 24/7-Arbeit, gemäß der Norm BS 5459-2)
- FR** le revêtement avec au moins 200 000 cycles Martindales confirmés (utilisation intensive en mode de travail 24 h/24, 7 j/7, conformément à la norme BS 5459-2)



easy to disinfect

- EN** fabrics which can be disinfected with ethanol (70-75%) based products
- PL** tapicerki, które mogą być dezynfekowane produktami na bazie etanolu (70-75%)
- DE** Stoffe, die mit Produkten auf Basis von Ethanol (70-75 %) desinfiziert werden können
- FR** les tissus pouvant être désinfectés avec des produits à base d'éthanol (70-75%)



natural origin

- EN** natural origin of the material: wool, leather etc.
- PL** naturalne pochodzenie materiału: wełna, skóra itp.
- DE** natürlicher Ursprung des Materials: Wolle, Leder etc.
- FR** l'origine naturelle du matériau: laine, cuir, etc.



easily washable

- EN** the feature concerns coated materials (e.g. Silvertex, Valencia)
- PL** właściwość materiałów powlekanych (np. Silvertex, Valencia)
- DE** dieses Merkmal betrifft beschichtete Materialien (z. B. Silvertex, Valencia)
- FR** la propriété concerne les matériaux enduits (par exemple Silvertex, Valencia)



recycled origin

- EN** the fabric obtained from recycled materials
- PL** materiał pozyskiwany z recyklingu
- DE** aus recycelten Materialien gewonnener Stoff
- FR** le tissu obtenu à partir des matériaux recyclés



environmentally friendly

- EN** the certificate like EU Ecolabel, C2C, Blue Angel
- PL** certyfikat typu EU Ecolabel, C2C, Blue Angel
- DE** Zertifikate wie EU Ecolabel, C2C, Blauer Engel
- FR** le certificat de type EU Ecolabel, C2C, Blue Angel



confirmed safety

- EN** the certificate like Oeko-Tex Standard100 or test reports according to EN 71-3 norm
- PL** certyfikat typu Oek-Tex Standard 100 lub wynik testów zgodny z normą EN 71-3
- DE** Zertifikate wie Oeko-Tex Standard 100 oder Prüfgutachten nach der Norm EN 71-3
- FR** le certificat de type Oeko-Tex Standard 100, ou les résultats de tests conformes à la norme EN 71-3

Fenix NTM®



thermal healing of micro-scratches

- EN** thermal healing of superficial micro-scratches
- PL** termiczna naprawa powierzchniowych mikrouszkodzeń
- DE** thermische Reparierbarkeit von oberflächlichen Mikrokratzern
- FR** réparabilité thermique des micro-rayures superficielles



soft touch

- EN** soft touch
- PL** przyjemny w dotyku
- DE** weiche Haptik
- FR** toucher soyeux



low light reflectivity

- EN** extremely matt surface
- PL** wyjątkowo matowa powierzchnia
- DE** extrem matte Oberfläche
- FR** surface extrêmement mate



anti-fingerprint

- EN** anti-fingerprint
- PL** niewidoczne odciski palców
- DE** schutz vor Fingerabdrücken
- FR** anti-traces

Other



pressure resistant



chipping resistant



UV rays resistant

- EN** resistance to different factors
- PL** odporność na różne czynniki
- DE** Widerstandsfähigkeit gegenüber verschiedenen Faktoren
- FR** résistance aux plusieurs facteurs



rainwater retention

- EN** water quickly evacuated from the table top
- PL** szybkie odprowadzanie wody z blatu
- DE** Flüssigkeit wird schnell von der Tischoberfläche abgeleitet
- FR** évacuation rapide d'eau du plateau de table



high temperature resistant



weather conditions resistant



scratches resistant

